

Product datasheet

Anti-PSF1 antibody [EPR13359] ab181112

Recombinant RabMAb

[6 References](#) [6 Images](#)

Overview

Product name	Anti-PSF1 antibody [EPR13359]
Description	Rabbit monoclonal [EPR13359] to PSF1
Host species	Rabbit
Tested applications	Suitable for: WB, ICC/IF, Flow Cyt (Intra) Unsuitable for: IP
Species reactivity	Reacts with: Mouse, Rat, Human
Immunogen	Synthetic peptide. This information is proprietary to Abcam and/or its suppliers.
Positive control	Flow Cyt (intra): HepG2 cells ICC/IF: HeLa and HepG2 cells WB: Jurkat, HeLa and HepG2 whole cell lysate (ab7900); human fetal heart tissue lysate, mouse and rat heart tissue lysate
General notes	This product is a recombinant monoclonal antibody, which offers several advantages including: <ul style="list-style-type: none"> - High batch-to-batch consistency and reproducibility - Improved sensitivity and specificity - Long-term security of supply - Animal-free production For more information see here . Our RabMAb [®] technology is a patented hybridoma-based technology for making rabbit monoclonal antibodies. For details on our patents, please refer to RabMAb[®] patents .

Properties

Form	Liquid
Storage instructions	Shipped at 4°C. Store at +4°C short term (1-2 weeks). Upon delivery aliquot. Store at -20°C long term. Avoid freeze / thaw cycle.
Storage buffer	Preservative: 0.01% Sodium azide Constituents: 59% PBS, 40% Glycerol (glycerin, glycerine), 0.05% BSA
Purity	Protein A purified
Clonality	Monoclonal
Clone number	EPR13359
Isotype	IgG

Applications

The Abpromise guarantee

Our **Abpromise guarantee** covers the use of ab181112 in the following tested applications.

The application notes include recommended starting dilutions; optimal dilutions/concentrations should be determined by the end user.

Application	Abreviews	Notes
WB		1/10000 - 1/50000. Detects a band of approximately 23 kDa (predicted molecular weight: 23 kDa).
ICC/IF		1/100. For unpurified format use at 1/250 - 1/500 dilution.
Flow Cyt (Intra)		Use at an assay dependent concentration.

Application notes

Is unsuitable for IP.

Target

Function

The GINS complex plays an essential role in the initiation of DNA replication, and progression of DNA replication forks. GINS complex seems to bind preferentially to single-stranded DNA. GINS1 is essential for function.

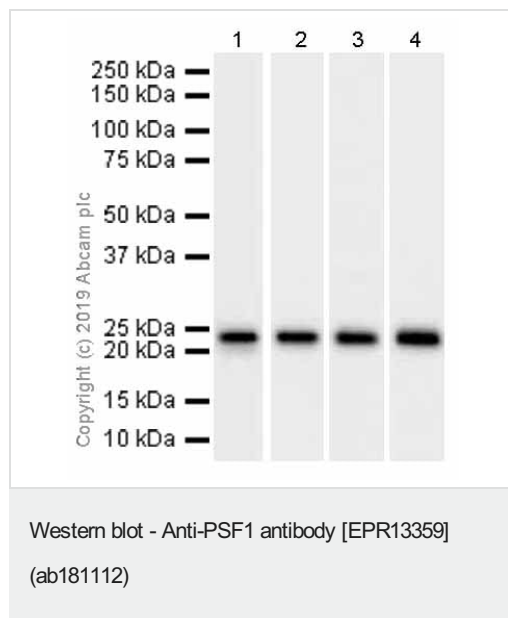
Sequence similarities

Belongs to the GINS1/PSF1 family.

Cellular localization

Nucleus.

Images



All lanes : Anti-PSF1 antibody [EPR13359] (ab181112) at 1/10000 dilution (Purified)

Lane 1 : HeLa (Human cervix adenocarcinoma epithelial cell) whole cell lysates

Lane 2 : Human fetal heart lysates

Lane 3 : Mouse heart lysates

Lane 4 : Rat heart lysates

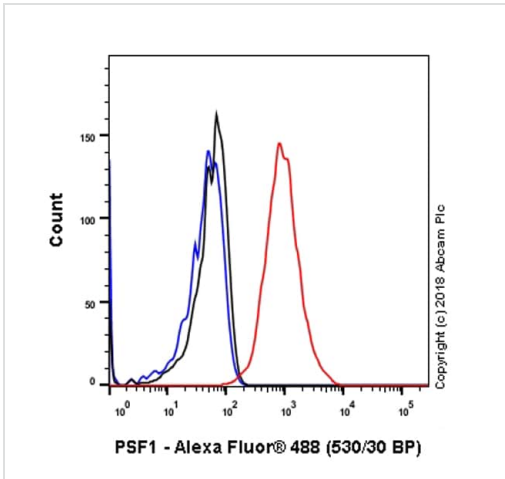
Lysates/proteins at 15 µg per lane.

Secondary

All lanes : Goat Anti-Rabbit IgG H&L (HRP) (**ab97051**) at 1/20000 dilution

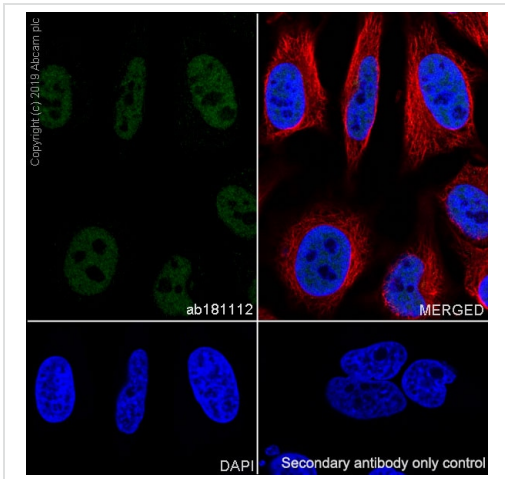
Predicted band size: 23 kDa

Observed band size: 23 kDa



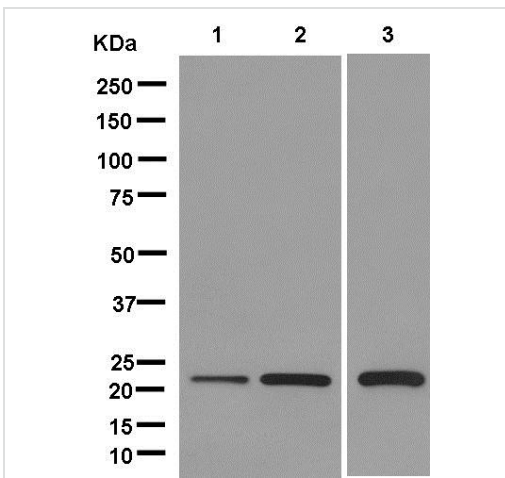
Flow Cytometry (Intracellular) - Anti-PSF1 antibody [EPR13359] (ab181112)

Intracellular Flow Cytometry analysis of HepG2 (Human hepatocellular carcinoma epithelial cell) cells labeling PSF1 with purified ab181112 at 1/70 dilution (10 µg/ml) (red). Cells were fixed with 4% Paraformaldehyde and permeabilised with 90% Methanol. A Goat anti rabbit IgG (Alexa Fluor® 488, **ab150077**) secondary antibody was used at 1/2000. Isotype control - Rabbit monoclonal IgG (Black). Unlabeled control - Cell without incubation with primary antibody and secondary antibody (Blue).



Immunocytochemistry/ Immunofluorescence - Anti-PSF1 antibody [EPR13359] (ab181112)

Immunocytochemistry/ Immunofluorescence analysis of HeLa (Human cervix adenocarcinoma epithelial cell) cells labeling PSF1 with purified ab181112 at 1/100 dilution (7.5 µg/ml). Cells were fixed in 4% Paraformaldehyde and permeabilized with 0.1% tritonX-100. Cells were counterstained with **ab195889** Anti-alpha Tubulin antibody [DM1A] - Microtubule Marker (Alexa Fluor® 594) at 1/200 (2.5 µg/ml). Goat anti rabbit IgG (Alexa Fluor® 488, **ab150077**) was used as the secondary antibody at 1/1000 (2 µg/ml) dilution. DAPI (blue) was used as nuclear counterstain. PBS instead of the primary antibody was used as the secondary antibody only control.



Western blot - Anti-PSF1 antibody [EPR13359] (ab181112)

All lanes : Anti-PSF1 antibody [EPR13359] (ab181112) at 1/20000 dilution (unpurified)

Lane 1 : Jurkat cell lysate

Lane 2 : HeLa cell lysate

Lane 3 : HepG2 cell lysate

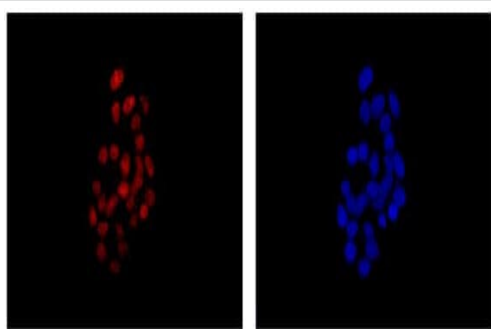
Lysates/proteins at 20 µg per lane.

Secondary

All lanes : Goat Anti-Rabbit IgG, (H+L), Peroxidase conjugate at 1/1000 dilution

Predicted band size: 23 kDa

Observed band size: 23 kDa



Immunocytochemistry/ Immunofluorescence - Anti-PSF1 antibody [EPR13359] (ab181112)

Immunofluorescent analysis of 4% paraformaldehyde-fixed HepG2 cells labeling PSF1 with ab181112 (unpurified) at 1/500 dilution followed by Goat anti rabbit IgG (Alexa Fluor® 555) secondary antibody at 1/200 dilution. Counter stained with Dapi (blue).

Why choose a recombinant antibody?



Research with confidence
Consistent and reproducible results



Long-term and scalable supply
Recombinant technology



Success from the first experiment
Confirmed specificity



Ethical standards compliant
Animal-free production

Anti-PSF1 antibody [EPR13359] (ab181112)

Please note: All products are "FOR RESEARCH USE ONLY. NOT FOR USE IN DIAGNOSTIC PROCEDURES"

Our Abpromise to you: Quality guaranteed and expert technical support

- Replacement or refund for products not performing as stated on the datasheet
- Valid for 12 months from date of delivery
- Response to your inquiry within 24 hours
- We provide support in Chinese, English, French, German, Japanese and Spanish
- Extensive multi-media technical resources to help you
- We investigate all quality concerns to ensure our products perform to the highest standards

If the product does not perform as described on this datasheet, we will offer a refund or replacement. For full details of the Abpromise, please visit <https://www.abcam.com/abpromise> or contact our technical team.

Terms and conditions

- Guarantee only valid for products bought direct from Abcam or one of our authorized distributors