




Product datasheet

Anti-PSF3 antibody ab177515

[4 References](#) [3 Images](#)

Overview

Product name	Anti-PSF3 antibody
Description	Rabbit polyclonal to PSF3
Host species	Rabbit
Tested applications	Suitable for: WB, IP, IHC-P
Species reactivity	Reacts with: Human Predicted to work with: Rabbit, Horse, Cat, Chimpanzee, Cynomolgus monkey, Rhesus monkey, Gorilla, Orangutan 
Immunogen	Synthetic peptide within Human PSF3 aa 166-216. The exact sequence is proprietary. (NP_073607.2). Sequence: ARLDEMERGLFQTGQKGLNDFQCWEKGQASQITASNLV QNYKKRKFTDME D Database link: Q9BRX5  Run BLAST with  Run BLAST with
Positive control	WB: 293T, HeLa and Jurkat whole cell lysates. IP: 293T cell lysate. IHC-P: Human breast carcinoma tissue.
General notes	<p>The Life Science industry has been in the grips of a reproducibility crisis for a number of years. Abcam is leading the way in addressing this with our range of recombinant monoclonal antibodies and knockout edited cell lines for gold-standard validation. Please check that this product meets your needs before purchasing.</p> <p>If you have any questions, special requirements or concerns, please send us an inquiry and/or contact our Support team ahead of purchase. Recommended alternatives for this product can be found below, along with publications, customer reviews and Q&As</p>

Properties

Form	Liquid
Storage instructions	Shipped at 4°C. Store at +4°C short term (1-2 weeks). Upon delivery aliquot. Store at -20°C long term. Avoid freeze / thaw cycle.
Storage buffer	pH: 7

Preservative: 0.09% Sodium azide
Constituent: 99% Tris citrate/phosphate

pH 7 to 8

Purity	Immunogen affinity purified
Purification notes	ab177515 was affinity purified using an epitope specific to PSF3 immobilized on solid support.
Clonality	Polyclonal
Isotype	IgG

Applications

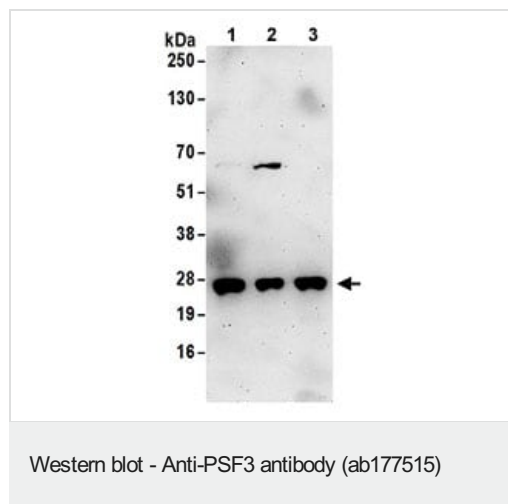
The Abpromise guarantee Our **Abpromise guarantee** covers the use of ab177515 in the following tested applications.
The application notes include recommended starting dilutions; optimal dilutions/concentrations should be determined by the end user.

Application	Abreviews	Notes
WB		1/2000 - 1/10000. Predicted molecular weight: 24 kDa.
IP		Use at 2-10 µg/mg of lysate.
IHC-P		1/500 - 1/2000. Perform heat mediated antigen retrieval with citrate buffer pH 6 before commencing with IHC staining protocol.

Target

Function	The GINS complex plays an essential role in the initiation of DNA replication, and progression of DNA replication forks. GINS complex seems to bind preferentially to single-stranded DNA.
Sequence similarities	Belongs to the GINS3/PSF3 family.
Cellular localization	Nucleus.

Images



All lanes : Anti-PSF3 antibody (ab177515) at 0.1 µg/ml

Lane 1 : 293T whole cell lysate

Lane 2 : HeLa whole cell lysate

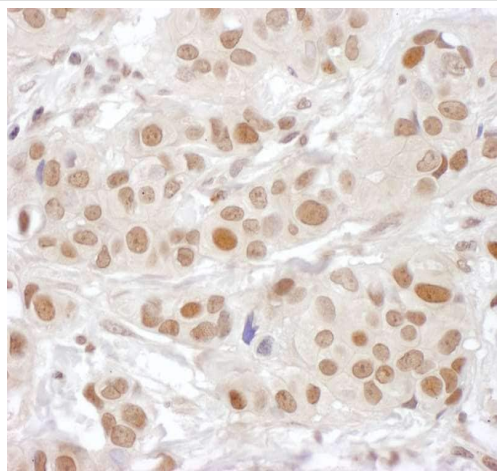
Lane 3 : Jurkat whole cell lysate

Lysates/proteins at 50 µg per lane.

Developed using the ECL technique.

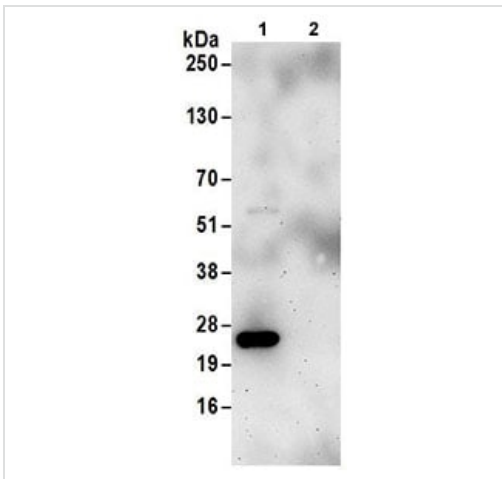
Predicted band size: 24 kDa

Exposure time: 3 minutes



Immunohistochemistry (Formalin/PFA-fixed paraffin-embedded sections) - Anti-PSF3 antibody (ab177515)

Immunohistochemical analysis of formalin-fixed, paraffin-embedded human breast carcinoma tissue labeling PSF3 with ab177515 at a 1/1000 dilution.



Immunoprecipitation - Anti-PSF3 antibody (ab177515)

Detection of PSF3 in Immunoprecipitates of 293T whole cell lysate (1 mg for IP, 20% of IP loaded) using ab177515 at 6 $\mu\text{g}/\text{mg}$ lysate for IP and at 0.1 $\mu\text{g}/\text{ml}$ for subsequent western blot detection. Lane 2 represents control IgG IP.

Detection: Chemiluminescence with an exposure time of 3 minutes.

Please note: All products are "FOR RESEARCH USE ONLY. NOT FOR USE IN DIAGNOSTIC PROCEDURES"

Our Abpromise to you: Quality guaranteed and expert technical support

- Replacement or refund for products not performing as stated on the datasheet
- Valid for 12 months from date of delivery
- Response to your inquiry within 24 hours
- We provide support in Chinese, English, French, German, Japanese and Spanish
- Extensive multi-media technical resources to help you
- We investigate all quality concerns to ensure our products perform to the highest standards

If the product does not perform as described on this datasheet, we will offer a refund or replacement. For full details of the Abpromise, please visit <https://www.abcam.com/abpromise> or contact our technical team.

Terms and conditions

- Guarantee only valid for products bought direct from Abcam or one of our authorized distributors