

## Product datasheet

### Anti-PSG1 antibody ab233130

5 Images

#### Overview

---

<b>Product name</b>	Anti-PSG1 antibody
<b>Description</b>	Rabbit polyclonal to PSG1
<b>Host species</b>	Rabbit
<b>Tested applications</b>	<b>Suitable for:</b> WB, IHC-P
<b>Species reactivity</b>	<b>Reacts with:</b> Mouse, Human
<b>Immunogen</b>	Recombinant fragment (His-T7-tag) corresponding to Human PSG1 aa 200 to the C-terminus. N-terminal tags. Expressed in E.coli. Database link: <a href="#">P11464</a> <a href="#">Run BLAST with</a> <a href="#">Run BLAST with</a>
<b>Positive control</b>	IHC-P: Human liver, breast cancer and colorectal cancer tissue. WB: Recombinant human PSG1 protein; HeLa cell lysate; Mouse kidney and breast cancer lysate.
<b>General notes</b>	<p>The Life Science industry has been in the grips of a reproducibility crisis for a number of years. Abcam is leading the way in addressing this with our range of recombinant monoclonal antibodies and knockout edited cell lines for gold-standard validation. Please check that this product meets your needs before purchasing.</p> <p>If you have any questions, special requirements or concerns, please send us an inquiry and/or contact our Support team ahead of purchase. Recommended alternatives for this product can be found below, along with publications, customer reviews and Q&amp;As</p>

#### Properties

---

<b>Form</b>	Liquid
<b>Storage instructions</b>	Shipped at 4°C. Store at +4°C short term (1-2 weeks). Upon delivery aliquot. Store at -20°C long term. Avoid freeze / thaw cycle.
<b>Storage buffer</b>	pH: 7.40 Preservative: 0.02% Sodium azide Constituents: 44.12% PBS, 55.77% Glycerol (glycerin, glycerine)
<b>Purity</b>	Immunogen affinity purified
<b>Purification notes</b>	Antigen-specific affinity chromatography followed by Protein A affinity chromatography.
<b>Clonality</b>	Polyclonal
<b>Isotype</b>	IgG

## Applications

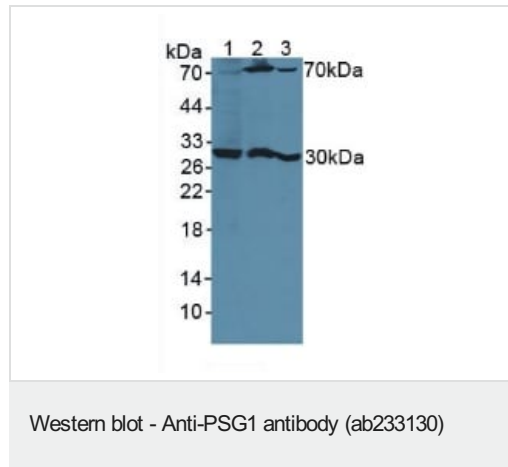
**The Abpromise guarantee** Our **Abpromise guarantee** covers the use of ab233130 in the following tested applications. The application notes include recommended starting dilutions; optimal dilutions/concentrations should be determined by the end user.

Application	Abreviews	Notes
WB		Use a concentration of 0.5 - 5 µg/ml.
IHC-P		Use a concentration of 5 - 20 µg/ml.

## Target

<b>Sequence similarities</b>	Belongs to the immunoglobulin superfamily. CEA family. Contains 3 Ig-like C2-type (immunoglobulin-like) domains. Contains 1 Ig-like V-type (immunoglobulin-like) domain.
<b>Developmental stage</b>	PSBG are produced in high quantity during pregnancy.
<b>Cellular localization</b>	Secreted.

## Images



**All lanes** : Anti-PSG1 antibody (ab233130) at 3 µg/ml

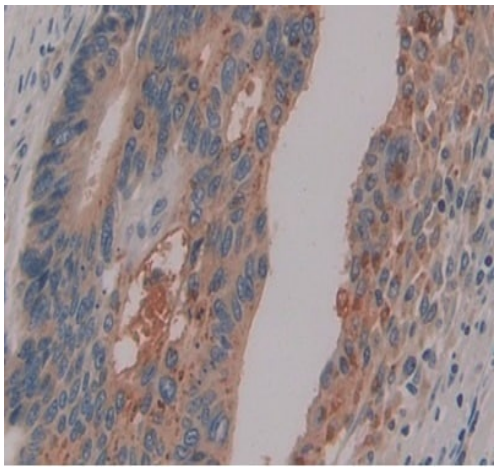
**Lane 1** : HeLa (human epithelial cell line from cervix adenocarcinoma) cell lysate

**Lane 2** : Mouse kidney tissue lysate

**Lane 3** : Mouse breast cancer tissue lysate

### Secondary

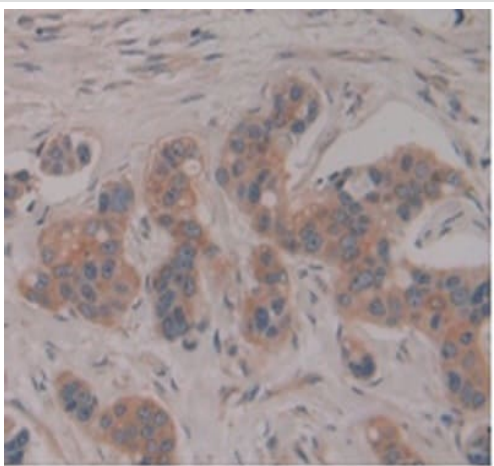
**All lanes** : HRP-Linked Guinea pig Anti-Rabbit at 1/2000 dilution



Immunohistochemistry (Formalin/PFA-fixed paraffin-embedded sections) - Anti-PSG1 antibody (ab233130)

Formalin-fixed, paraffin-embedded human colorectal cancer tissue stained for PSG1 using ab233130 at 10  $\mu\text{g}/\text{mL}$  in immunohistochemical analysis.

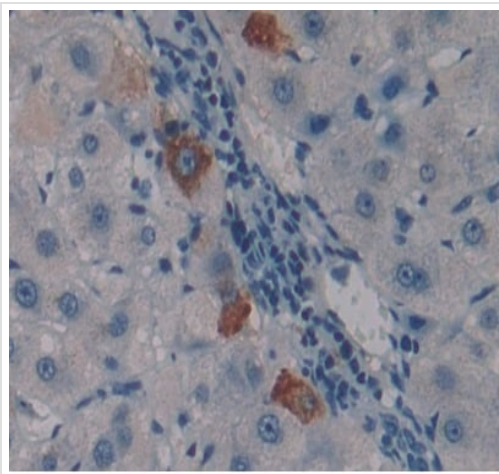
Secondary antibody used HRP-Linked Goat anti-Rabbit IgG polyclonal at 2  $\mu\text{g}/\text{ml}$ . DAB staining.



Immunohistochemistry (Formalin/PFA-fixed paraffin-embedded sections) - Anti-PSG1 antibody (ab233130)

Formalin-fixed, paraffin-embedded human breast cancer tissue stained for PSG1 using ab233130 at 10  $\mu\text{g}/\text{mL}$  in immunohistochemical analysis.

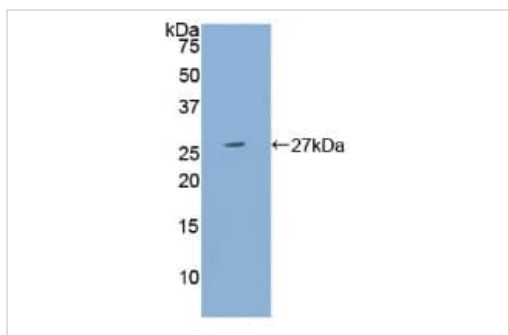
Secondary antibody used HRP-Linked Goat anti-Rabbit IgG polyclonal at 2  $\mu\text{g}/\text{ml}$ . DAB staining.



Immunohistochemistry (Formalin/PFA-fixed paraffin-embedded sections) - Anti-PSG1 antibody (ab233130)

Formalin-fixed, paraffin-embedded human liver tissue stained for PSG1 using ab233130 at 10 µg/mL in immunohistochemical analysis.

Secondary antibody used HRP-Linked Goat anti-Rabbit IgG polyclonal at 2 µg/ml. DAB staining.



Western blot - Anti-PSG1 antibody (ab233130)

Anti-PSG1 antibody (ab233130) at 3 µg/ml + Recombinant human PSG1 protein

**Please note:** All products are "FOR RESEARCH USE ONLY. NOT FOR USE IN DIAGNOSTIC PROCEDURES"

### Our Abpromise to you: Quality guaranteed and expert technical support

- Replacement or refund for products not performing as stated on the datasheet
- Valid for 12 months from date of delivery
- Response to your inquiry within 24 hours
- We provide support in Chinese, English, French, German, Japanese and Spanish
- Extensive multi-media technical resources to help you
- We investigate all quality concerns to ensure our products perform to the highest standards

If the product does not perform as described on this datasheet, we will offer a refund or replacement. For full details of the Abpromise, please visit <https://www.abcam.com/abpromise> or contact our technical team.

## Terms and conditions

---

- Guarantee only valid for products bought direct from Abcam or one of our authorized distributors