

Anti-PSMB1 antibody ab196623

[1 References](#) [4 Images](#)

Overview

Product name	Anti-PSMB1 antibody
Description	Rabbit polyclonal to PSMB1
Host species	Rabbit
Tested applications	Suitable for: ICC/IF, IHC-P, WB
Species reactivity	Reacts with: Mouse, Rat, Human
Immunogen	Recombinant full length protein corresponding to Human PSMB1. Database link: P20618
Positive control	MCF7, HL-60, SW480, K562, PC3, mouse skeletal muscle and mouse liver cell line extracts. Human breast cancer and rat testis tissue. U2OS cells.
General notes	<p>The Life Science industry has been in the grips of a reproducibility crisis for a number of years. Abcam is leading the way in addressing this with our range of recombinant monoclonal antibodies and knockout edited cell lines for gold-standard validation. Please check that this product meets your needs before purchasing.</p> <p>If you have any questions, special requirements or concerns, please send us an inquiry and/or contact our Support team ahead of purchase. Recommended alternatives for this product can be found below, along with publications, customer reviews and Q&As</p>

Properties

Form	Liquid
Storage instructions	Shipped at 4°C. Store at +4°C short term (1-2 weeks). Upon delivery aliquot. Store at -20°C long term. Avoid freeze / thaw cycle.
Storage buffer	pH: 7.40 Preservative: 0.02% Sodium azide Constituents: 49% PBS, 50% Glycerol (glycerin, glycerine), 0.87% Sodium chloride (without Mg ²⁺ and Ca ²⁺),
Purity	Immunogen affinity purified
Clonality	Polyclonal
Isotype	IgG

Applications

The Abpromise guarantee

Our **Abpromise guarantee** covers the use of ab196623 in the following tested applications.

The application notes include recommended starting dilutions; optimal dilutions/concentrations should be determined by the end user.

Application	Abreviews	Notes
ICC/IF		1/50 - 1/200.
IHC-P		1/50 - 1/100.
WB		1/500 - 1/2000. Predicted molecular weight: 26 kDa.

Target

Function

The proteasome is a multicatalytic proteinase complex which is characterized by its ability to cleave peptides with Arg, Phe, Tyr, Leu, and Glu adjacent to the leaving group at neutral or slightly basic pH. The proteasome has an ATP-dependent proteolytic activity.

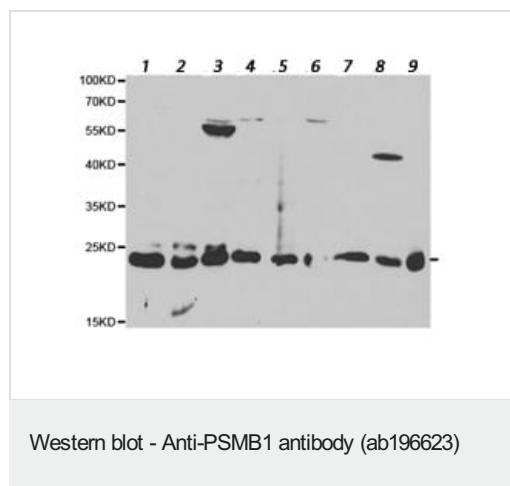
Sequence similarities

Belongs to the peptidase T1B family.

Cellular localization

Cytoplasm. Nucleus.

Images



All lanes : Anti-PSMB1 antibody (ab196623) at 1/500 dilution

Lane 1 : MCF7 cell extract

Lane 2 : HL60 cell extract

Lane 3 : SW480 cell extract

Lane 4 : HepG2 cell extract

Lane 5 : SW620 cell extract

Lane 6 : K562 cell extract

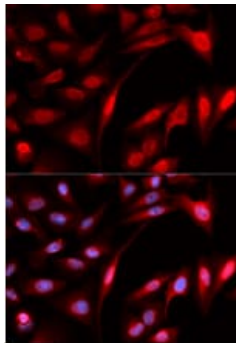
Lane 7 : PC3 cell extract

Lane 8 : Mouse skeletal muscle cell extract

Lane 9 : Mouse liver cell extract

Developed using the ECL technique.

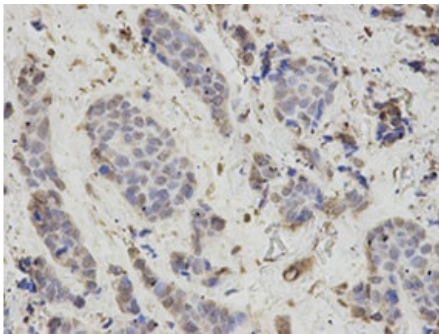
Predicted band size: 26 kDa



Immunocytochemistry/ Immunofluorescence - Anti-PSMB1 antibody (ab196623)

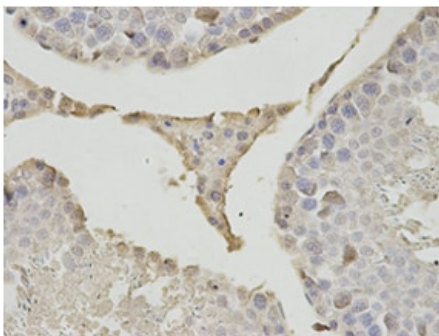
Immunofluorescence analysis of U2OS cells labeling PSMB1 with ab196623 at 1/50 dilution (top panel).

Blue: DAPI for nuclear staining (bottom panel).



Immunohistochemistry (Formalin/PFA-fixed paraffin-embedded sections) - Anti-PSMB1 antibody (ab196623)

Immunohistochemical analysis of formalin fixed and paraffin embedded rat testis labeling PSMB1 with ab196623 at a 1/200 dilution.



Immunohistochemistry (Formalin/PFA-fixed paraffin-embedded sections) - Anti-PSMB1 antibody (ab196623)

Immunohistochemical analysis of formalin fixed and paraffin embedded human breast cancer tissue labeling PSMB1 with ab196623 at a 1/200 dilution.

Our Abpromise to you: Quality guaranteed and expert technical support

- Replacement or refund for products not performing as stated on the datasheet
- Valid for 12 months from date of delivery
- Response to your inquiry within 24 hours

- We provide support in Chinese, English, French, German, Japanese and Spanish
- Extensive multi-media technical resources to help you
- We investigate all quality concerns to ensure our products perform to the highest standards

If the product does not perform as described on this datasheet, we will offer a refund or replacement. For full details of the Abpromise, please visit <https://www.abcam.com/abpromise> or contact our technical team.

Terms and conditions

- Guarantee only valid for products bought direct from Abcam or one of our authorized distributors