

Product datasheet

Anti-PSMB5/MB1 antibody ab3330

★★★★★ [4 Abreviews](#) [38 References](#) [4 Images](#)

Overview

Product name	Anti-PSMB5/MB1 antibody
Description	Rabbit polyclonal to PSMB5/MB1
Host species	Rabbit
Specificity	Detects proteasome PSMB5/MB1.
Tested applications	Suitable for: WB, ICC
Species reactivity	Reacts with: Mouse, Cow, Human
Immunogen	Synthetic peptide corresponding to Mouse PSMB5/MB1 aa 200 to the C-terminus. Database link: O55234

 [Run BLAST with](#)

 [Run BLAST with](#)

General notes

The Life Science industry has been in the grips of a reproducibility crisis for a number of years. Abcam is leading the way in addressing this with our range of recombinant monoclonal antibodies and knockout edited cell lines for gold-standard validation. Please check that this product meets your needs before purchasing.

If you have any questions, special requirements or concerns, please send us an inquiry and/or contact our Support team ahead of purchase. Recommended alternatives for this product can be found below, along with publications, customer reviews and Q&As

Properties

Form	Liquid
Storage instructions	Shipped at 4°C. Store at +4°C short term (1-2 weeks). Upon delivery aliquot. Store at -20°C or -80°C. Avoid freeze / thaw cycle.
Storage buffer	Constituents: 0.1% BSA, 99% PBS
Purity	Immunogen affinity purified
Clonality	Polyclonal
Isotype	IgG

Applications

The Abpromise guarantee

Our [Abpromise guarantee](#) covers the use of ab3330 in the following tested applications.

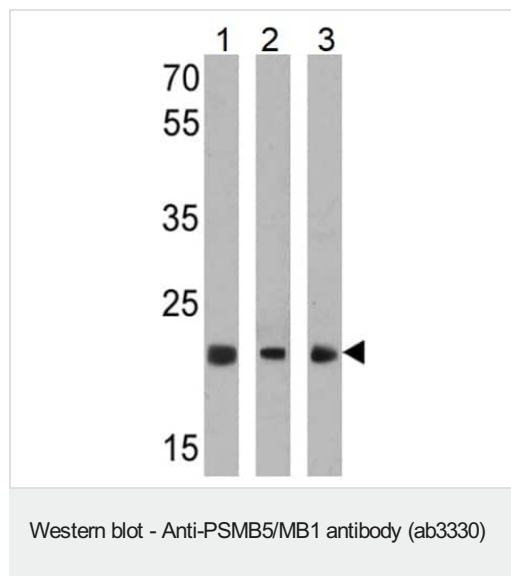
The application notes include recommended starting dilutions; optimal dilutions/concentrations should be determined by the end user.

Application	Abreviews	Notes
WB	★★★★★ (4)	1/500 - 1/5000. Detects a band of approximately 22 kDa.
ICC		1/10 - 1/200.

Target

Function	The proteasome is a multicatalytic proteinase complex which is characterized by its ability to cleave peptides with Arg, Phe, Tyr, Leu, and Glu adjacent to the leaving group at neutral or slightly basic pH. The proteasome has an ATP-dependent proteolytic activity. This unit is responsible of the chymotrypsin-like activity of the proteasome and is one of the principal target of the proteasome inhibitor bortezomib. May catalyze basal processing of intracellular antigens. Plays a role in the protection against oxidative damage through the Nrf2-ARE pathway.
Sequence similarities	Belongs to the peptidase T1B family.
Cellular localization	Cytoplasm. Nucleus.

Images



All lanes : Anti-PSMB5/MB1 antibody (ab3330) at 1/1000 dilution

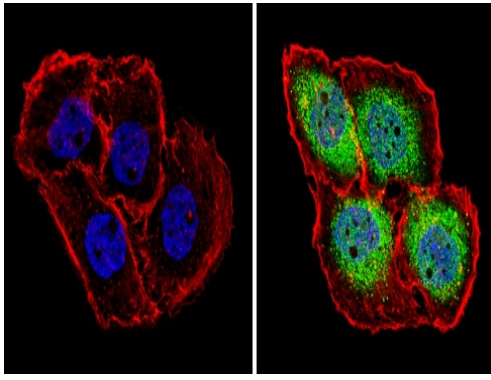
Lane 1 : NCI-H1299 (Human lung carcinoma cell line) whole cell lysate

Lane 2 : HeLa (Human epithelial adenocarcinoma cell line) whole cell lysate

Lane 3 : Mouse liver cell lysate

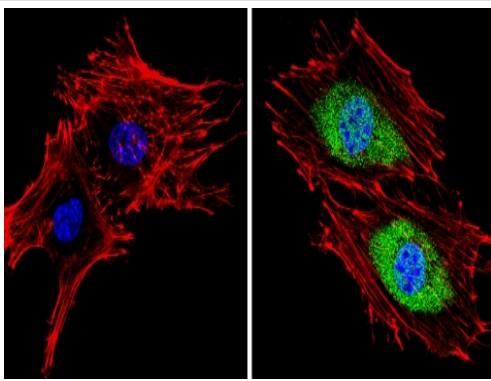
Lysates/proteins at 25 µg per lane.

Observed band size: 23 kDa



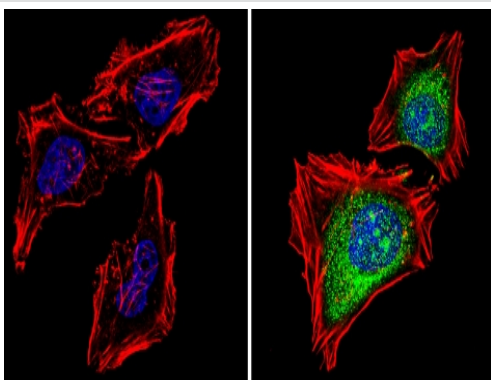
Immunocytochemistry - Anti-PSMB5/MB1 antibody
(ab3330)

Immunocytochemistry/Immunofluorescence analysis of PSMB5/MB1 (green) showing staining in the cytoplasm and nucleus of A431 (Human epidermoid carcinoma cell line) cells (right) compared to a negative control without primary antibody (left). Formalin-fixed cells were permeabilized with 0.1% Triton X-100 in TBS for 5-10 minutes and blocked with 3% BSA-PBS for 30 minutes at room temperature. Cells were incubated with ab3330 in 3% BSA-PBS at a dilution of 1:100 and incubated overnight at 4°C in a humidified chamber. Cells were washed with PBST and incubated with a DyLight-conjugated secondary antibody in PBS at room temperature in the dark. F-actin (red) was stained with a fluorescent red phalloidin and nuclei (blue) were stained with Hoechst or DAPI. Images were taken at a magnification of 60x.



Immunocytochemistry - Anti-PSMB5/MB1 antibody
(ab3330)

Immunocytochemistry/Immunofluorescence analysis of PSMB5/MB1 (green) showing staining in the cytoplasm and nucleus of BAEC (Bovine aortic endothelial cell line) cells (right) compared to a negative control without primary antibody (left). Formalin-fixed cells were permeabilized with 0.1% Triton X-100 in TBS for 5-10 minutes and blocked with 3% BSA-PBS for 30 minutes at room temperature. Cells were incubated with ab3330 in 3% BSA-PBS at a dilution of 1:100 and incubated overnight at 4°C in a humidified chamber. Cells were washed with PBST and incubated with a DyLight-conjugated secondary antibody in PBS at room temperature in the dark. F-actin (red) was stained with a fluorescent red phalloidin and nuclei (blue) were stained with Hoechst or DAPI. Images were taken at a magnification of 60x.



Immunocytochemistry - Anti-PSMB5/MB1 antibody
(ab3330)

Immunocytochemistry/Immunofluorescence analysis of PSMB5/MB1 (green) showing staining in the cytoplasm and nucleus of HeLa (Human epithelial adenocarcinoma cell line) cells (right) compared to a negative control without primary antibody (left). Formalin-fixed cells were permeabilized with 0.1% Triton X-100 in TBS for 5-10 minutes and blocked with 3% BSA-PBS for 30 minutes at room temperature. Cells were incubated with ab3330 in 3% BSA-PBS at a dilution of 1:100 and incubated overnight at 4°C in a humidified chamber. Cells were washed with PBST and incubated with a DyLight-conjugated secondary antibody in PBS at room temperature in the dark. F-actin (red) was stained with a fluorescent red phalloidin and nuclei (blue) were stained with Hoechst or DAPI. Images were taken at a magnification of 60x.

Our Abpromise to you: Quality guaranteed and expert technical support

- Replacement or refund for products not performing as stated on the datasheet
- Valid for 12 months from date of delivery
- Response to your inquiry within 24 hours

- We provide support in Chinese, English, French, German, Japanese and Spanish
- Extensive multi-media technical resources to help you
- We investigate all quality concerns to ensure our products perform to the highest standards

If the product does not perform as described on this datasheet, we will offer a refund or replacement. For full details of the Abpromise, please visit <https://www.abcam.com/abpromise> or contact our technical team.

Terms and conditions

- Guarantee only valid for products bought direct from Abcam or one of our authorized distributors