

## Product datasheet

### Anti-PSMC6 antibody [p42-23] ab22639

★★★★★ [2 Abreviews](#) [5 References](#) [3 Images](#)

#### Overview

<b>Product name</b>	Anti-PSMC6 antibody [p42-23]
<b>Description</b>	Mouse monoclonal [p42-23] to PSMC6
<b>Host species</b>	Mouse
<b>Tested applications</b>	<b>Suitable for:</b> Flow Cyt, WB, IHC-P <b>Unsuitable for:</b> IP
<b>Species reactivity</b>	<b>Reacts with:</b> Human
<b>Immunogen</b>	Recombinant full length protein (Human).
<b>Positive control</b>	HeLa S3 cytosolic preparation and human placental proteasome preparation.
<b>General notes</b>	<p>The Life Science industry has been in the grips of a reproducibility crisis for a number of years. Abcam is leading the way in addressing this with our range of recombinant monoclonal antibodies and knockout edited cell lines for gold-standard validation. Please check that this product meets your needs before purchasing.</p> <p>If you have any questions, special requirements or concerns, please send us an inquiry and/or contact our Support team ahead of purchase. Recommended alternatives for this product can be found below, along with publications, customer reviews and Q&amp;As</p>

#### Properties

<b>Form</b>	Liquid
<b>Storage instructions</b>	Shipped at 4°C. Upon delivery aliquot and store at -20°C. Avoid freeze / thaw cycles.
<b>Storage buffer</b>	Preservative: 0.065% Sodium azide
<b>Purity</b>	Protein A purified
<b>Purification notes</b>	Partially purified immunoglobulin preparation.
<b>Clonality</b>	Monoclonal
<b>Clone number</b>	p42-23
<b>Isotype</b>	IgG2a

#### Applications

## The Abpromise guarantee

Our **Abpromise guarantee** covers the use of ab22639 in the following tested applications.

The application notes include recommended starting dilutions; optimal dilutions/concentrations should be determined by the end user.

Application	Abreviews	Notes
Flow Cyt		1/100. <b>ab170191</b> - Mouse monoclonal IgG2a, is suitable for use as an isotype control with this antibody.
WB	★★★★★ (1)	Use at an assay dependent concentration. Detects a band of approximately 44 kDa.
IHC-P		Use a concentration of 1 µg/ml. Perform heat mediated antigen retrieval with citrate buffer pH 6 before commencing with IHC staining protocol.

## Application notes

Is unsuitable for IP.

## Target

### Function

The 26S protease is involved in the ATP-dependent degradation of ubiquitinated proteins. The regulatory (or ATPase) complex confers ATP dependency and substrate specificity to the 26S complex.

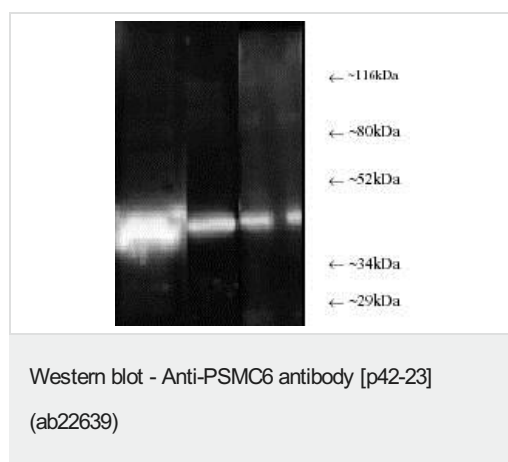
### Sequence similarities

Belongs to the AAA ATPase family.

### Cellular localization

Cytoplasm. Nucleus.

## Images



**All lanes :** Anti-PSMC6 antibody [p42-23] (ab22639) at 1/5000 dilution

**Lane 1 :** Rpt4 in HeLa S3 cytosolic preparation

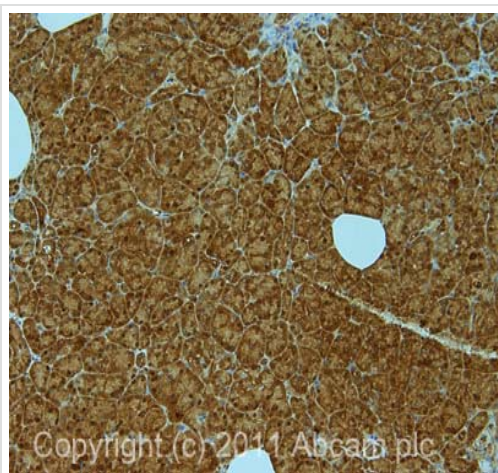
**Lane 2 :** Purified protein

**Lane 3 :** Proteasome in human placenta

Developed using the ECL technique.

**Observed band size:** 44 kDa

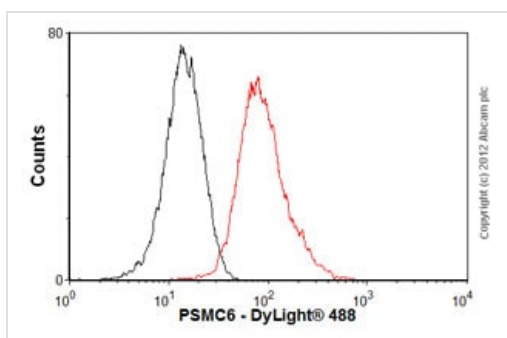
**Exposure time:** 1 minute



Immunohistochemistry (Formalin/PFA-fixed paraffin-embedded sections) - Anti-PSMC6 antibody [p42-23] (ab22639)

IHC image of ab22639 staining in human normal pancreas formalin fixed paraffin embedded tissue section, performed on a Leica Bond™ system using the standard protocol F. The section was pre-treated using heat mediated antigen retrieval with sodium citrate buffer (pH6, epitope retrieval solution 1) for 20 mins. The section was then incubated with ab22639, 1µg/ml, for 15 mins at room temperature and detected using an HRP conjugated compact polymer system. DAB was used as the chromogen. The section was then counterstained with haematoxylin and mounted with DPX.

For other IHC staining systems (automated and non-automated) customers should optimize variable parameters such as antigen retrieval conditions, primary antibody concentration and antibody incubation times.



Flow Cytometry - Anti-PSMC6 antibody [p42-23] (ab22639)

Overlay histogram showing HeLa cells stained with ab22639 (red line). The cells were fixed with 80% methanol (5 min) and then permeabilized with 0.1% PBS-Tween for 20 min. The cells were then incubated in 1x PBS / 10% normal goat serum / 0.3M glycine to block non-specific protein-protein interactions followed by the antibody (ab22639, 1/100 dilution) for 30 min at 22°C. The secondary antibody used was DyLight® 488 goat anti-mouse IgG (H+L) ([ab96879](#)) at 1/500 dilution for 30 min at 22°C. Isotype control antibody (black line) was mouse IgG2a [ICIGG2A] ([ab91361](#), 1µg/1x10<sup>6</sup> cells) used under the same conditions. Acquisition of >5,000 events was performed.

**Please note:** All products are "FOR RESEARCH USE ONLY. NOT FOR USE IN DIAGNOSTIC PROCEDURES"

## Our Abpromise to you: Quality guaranteed and expert technical support

- Replacement or refund for products not performing as stated on the datasheet
- Valid for 12 months from date of delivery
- Response to your inquiry within 24 hours
- We provide support in Chinese, English, French, German, Japanese and Spanish
- Extensive multi-media technical resources to help you
- We investigate all quality concerns to ensure our products perform to the highest standards

If the product does not perform as described on this datasheet, we will offer a refund or replacement. For full details of the Abpromise, please visit <https://www.abcam.com/abpromise> or contact our technical team.

#### **Terms and conditions**

---

- Guarantee only valid for products bought direct from Abcam or one of our authorized distributors