




### Anti-PSMD1 antibody ab140682

★★★★★ [1 Abreviews](#) [6 References](#) [5 Images](#)

#### Overview

<b>Product name</b>	Anti-PSMD1 antibody
<b>Description</b>	Rabbit polyclonal to PSMD1
<b>Host species</b>	Rabbit
<b>Tested applications</b>	<b>Suitable for:</b> IHC-Fr, WB, IP
<b>Species reactivity</b>	<b>Reacts with:</b> Mouse, Human <b>Predicted to work with:</b> Rat, Rabbit, Horse, Chicken, Guinea pig, Cow, Dog, Turkey, Pig, Xenopus laevis, Chimpanzee, Non human primates, Rhesus monkey, Gorilla, Chinese hamster, Orangutan, Xenopus tropicalis 
<b>Immunogen</b>	Synthetic peptide corresponding to a region between residues 903-953 of Human PSMD1 (NP_002798.2).  <a href="#">Run BLAST with Expasy</a>  <a href="#">Run BLAST with NCBI</a>
<b>Positive control</b>	WB: HEK293T, HeLa, NIH3T3 and Jurkat whole cell lysate. IP: HEK293T cells. IHC-Fr: Human breast carcinoma, Mouse renal cell carcinoma tissues.
<b>General notes</b>	<p>The Life Science industry has been in the grips of a reproducibility crisis for a number of years. Abcam is leading the way in addressing this with our range of recombinant monoclonal antibodies and knockout edited cell lines for gold-standard validation. Please check that this product meets your needs before purchasing.</p> <p>If you have any questions, special requirements or concerns, please send us an inquiry and/or contact our Support team ahead of purchase. Recommended alternatives for this product can be found below, along with publications, customer reviews and Q&amp;As</p>

#### Properties

<b>Form</b>	Liquid
<b>Storage instructions</b>	Shipped at 4°C. Store at +4°C.
<b>Storage buffer</b>	pH: 7 Preservative: 0.09% Sodium azide Constituent: 99% Tris citrate/phosphate
<b>Purity</b>	pH 7-8 Immunogen affinity purified

<b>Purification notes</b>	Antibody concentration was determined by extinction coefficient: absorbance at 280 nm of 1.4 equals 1.0 mg of IgG.
<b>Clonality</b>	Polyclonal
<b>Isotype</b>	IgG

## Applications

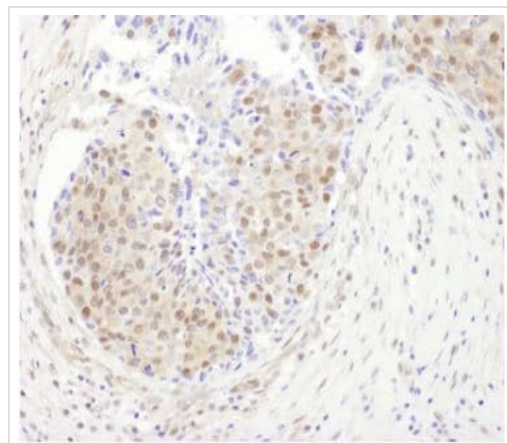
**The Abpromise guarantee** Our **Abpromise guarantee** covers the use of ab140682 in the following tested applications. The application notes include recommended starting dilutions; optimal dilutions/concentrations should be determined by the end user.

Application	Abreviews	Notes
IHC-Fr		1/1000 - 1/5000.
WB	★★★★★ (1)	1/2000 - 1/10000. Predicted molecular weight: 105 kDa.
IP		Use at 2-10 µg/mg of lysate.

## Target

<b>Function</b>	Acts as a regulatory subunit of the 26 proteasome which is involved in the ATP-dependent degradation of ubiquitinated proteins.
<b>Sequence similarities</b>	Belongs to the proteasome subunit S1 family. Contains 10 PC repeats.

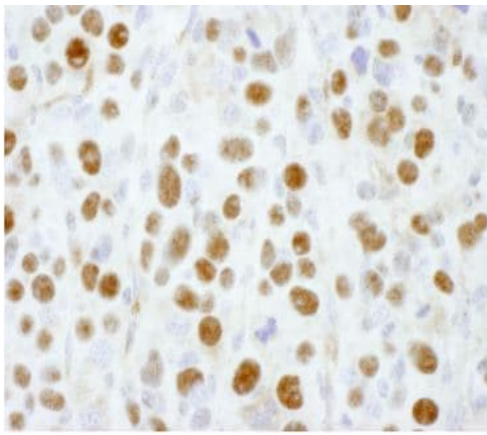
## Images



Immunohistochemical analysis of frozen section of Human breast carcinoma tissue with ab140682 at 1:5,000 (0.2µg/ml) dilution.

Detection: DAB

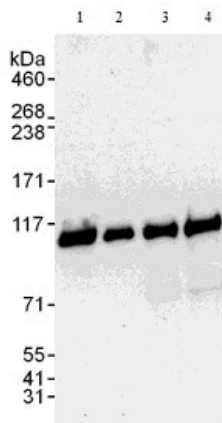
Immunohistochemistry (Frozen sections) - Anti-PSMD1 antibody (ab140682)



Immunohistochemistry (Frozen sections) - Anti-PSMD1 antibody (ab140682)

Immunohistochemical analysis of frozen section of Mouse renal cell carcinoma tissue with ab140682 at 1:5,000 (0.2µg/ml) dilution.

Detection: DAB



Western blot - Anti-PSMD1 antibody (ab140682)

**All lanes :** Anti-PSMD1 antibody (ab140682) at 0.1 µg/ml

**Lane 1 :** Whole cell lysate prepared from 293T cells at 50 µg

**Lane 2 :** Whole cell lysate prepared from 293T cells at 15 µg

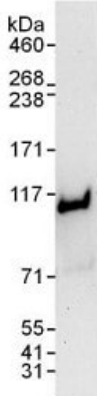
**Lane 3 :** Whole cell lysate prepared from HeLa cells at 50 µg

**Lane 4 :** Whole cell lysate prepared from Jurkat cells at 50 µg

Developed using the ECL technique.

**Predicted band size:** 105 kDa

**Exposure time:** 10 seconds



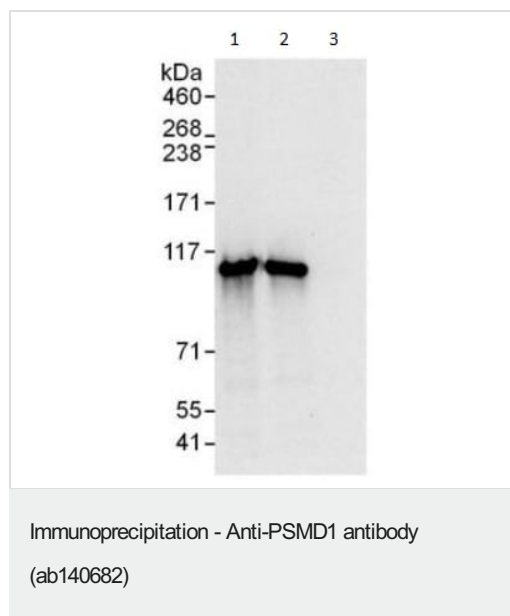
Western blot - Anti-PSMD1 antibody (ab140682)

Anti-PSMD1 antibody (ab140682) at 0.1 µg/ml + whole cell lysate prepared from NIH3T3 cells at 50 µg

Developed using the ECL technique.

**Predicted band size:** 105 kDa

**Exposure time:** 30 seconds



ab140682 at 1 µg/ml detecting PSMD1 in 293T whole cell lysate by WB following IP.

Lane 1: IP with an antibody which recognizes a different epitope of PSMD1.

Lane 2: ab140682 at 6 µg/mg of lysate.

Lane 3: Control IgG.

In each case, 1 mg of lysate was used for IP and 20% of the IP was loaded.

Detection: Chemiluminescence with an exposure time of 3 seconds

**Please note:** All products are "FOR RESEARCH USE ONLY. NOT FOR USE IN DIAGNOSTIC PROCEDURES"

### Our Abpromise to you: Quality guaranteed and expert technical support

---

- Replacement or refund for products not performing as stated on the datasheet
- Valid for 12 months from date of delivery
- Response to your inquiry within 24 hours
- We provide support in Chinese, English, French, German, Japanese and Spanish
- Extensive multi-media technical resources to help you
- We investigate all quality concerns to ensure our products perform to the highest standards

If the product does not perform as described on this datasheet, we will offer a refund or replacement. For full details of the Abpromise, please visit <https://www.abcam.com/abpromise> or contact our technical team.

### Terms and conditions

---

- Guarantee only valid for products bought direct from Abcam or one of our authorized distributors