




Anti-PSMD1 antibody ab2941

[8 References](#) [1 Image](#)

Overview

Product name	Anti-PSMD1 antibody
Description	Rabbit polyclonal to PSMD1
Host species	Rabbit
Specificity	Detects proteasome Rpn2 from human cells.
Tested applications	Suitable for: WB
Species reactivity	Reacts with: Mouse, Rat, Human, African green monkey Predicted to work with: Chicken 
Immunogen	Synthetic peptide corresponding to Human PSMD1 aa 929-953. Sequence: AAHGPKIEEEEQEPEPPEPFEYDD  Run BLAST with  Run BLAST with
General notes	<p>The Life Science industry has been in the grips of a reproducibility crisis for a number of years. Abcam is leading the way in addressing this with our range of recombinant monoclonal antibodies and knockout edited cell lines for gold-standard validation. Please check that this product meets your needs before purchasing.</p> <p>If you have any questions, special requirements or concerns, please send us an inquiry and/or contact our Support team ahead of purchase. Recommended alternatives for this product can be found below, along with publications, customer reviews and Q&As</p>

Properties

Form	Liquid
Storage instructions	Shipped at 4°C. Store at +4°C short term (1-2 weeks). Upon delivery aliquot. Store at -20°C or -80°C. Avoid freeze / thaw cycle.
Storage buffer	Preservative: 0.05% Sodium azide Constituents: 0.1% BSA, 99% PBS
Purity	Immunogen affinity purified
Clonality	Polyclonal
Isotype	IgG

Applications

The Abpromise guarantee

Our **Abpromise guarantee** covers the use of ab2941 in the following tested applications.

The application notes include recommended starting dilutions; optimal dilutions/concentrations should be determined by the end user.

Application	Abreviews	Notes
WB		Use a concentration of 1 µg/ml. Detects a band of approximately 105 kDa (predicted molecular weight: 105 kDa). By Western blot, this antibody detects an ~105 kDa protein representing proteasome 19S subunit S1 from HeLa cell extract.

Target

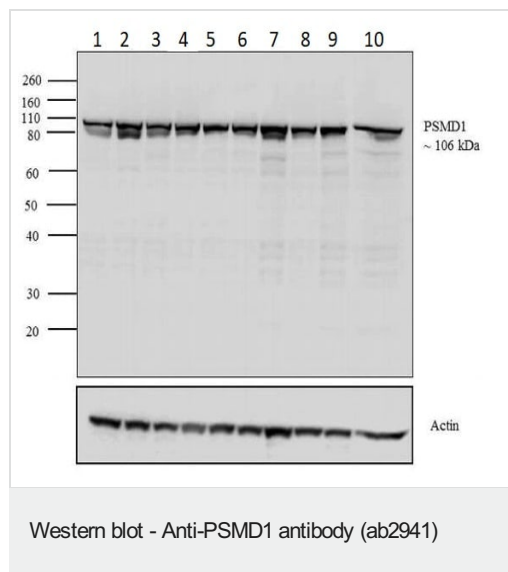
Function

Acts as a regulatory subunit of the 26 proteasome which is involved in the ATP-dependent degradation of ubiquitinated proteins.

Sequence similarities

Belongs to the proteasome subunit S1 family.
Contains 10 PC repeats.

Images



All lanes : Anti-PSMD1 antibody (ab2941) at 1 µg/ml

Lane 1 : MCF7 cell lysate

Lane 2 : PC-3 cell lysate

Lane 3 : HepG2 cell lysate

Lane 4 : SK-OV-3 cell lysate

Lane 5 : HeLa cell lysate

Lane 6 : COS-7 cell lysate

Lane 7 : Jurkat cell lysate

Lane 8 : A431 cell lysate

Lane 9 : Mouse testis tissue lysate

Lane 10 : Rat testis tissue lysate

Lysates/proteins at 30 µg per lane.

Secondary

All lanes : Goat anti-Rabbit IgG (H+L) Superclonal™ HRP conjugate at 1/2500 dilution

Developed using the ECL technique.

Predicted band size: 105 kDa

Observed band size: 106 kDa

Please note: All products are "FOR RESEARCH USE ONLY. NOT FOR USE IN DIAGNOSTIC PROCEDURES"

Our Abpromise to you: Quality guaranteed and expert technical support

- Replacement or refund for products not performing as stated on the datasheet
- Valid for 12 months from date of delivery
- Response to your inquiry within 24 hours
- We provide support in Chinese, English, French, German, Japanese and Spanish
- Extensive multi-media technical resources to help you
- We investigate all quality concerns to ensure our products perform to the highest standards

If the product does not perform as described on this datasheet, we will offer a refund or replacement. For full details of the Abpromise, please visit <https://www.abcam.com/abpromise> or contact our technical team.

Terms and conditions

- Guarantee only valid for products bought direct from Abcam or one of our authorized distributors