


## Product datasheet

### Anti-PSMD12 antibody ab228902

[2 Images](#)

#### Overview

---

<b>Product name</b>	Anti-PSMD12 antibody
<b>Description</b>	Rabbit polyclonal to PSMD12
<b>Host species</b>	Rabbit
<b>Tested applications</b>	<b>Suitable for:</b> WB, IHC-P
<b>Species reactivity</b>	<b>Reacts with:</b> Human <b>Predicted to work with:</b> Mouse, Rat, Chicken, Xenopus laevis 
<b>Immunogen</b>	Recombinant fragment within Human PSMD12 (internal sequence). The exact sequence is proprietary. Database link: <a href="#">O00232</a>
<b>Positive control</b>	WB: NT2/D1, IMR32, U87-MG, whole cell lysates. IHC-P: Human breast cancer tissue.
<b>General notes</b>	<p>The Life Science industry has been in the grips of a reproducibility crisis for a number of years. Abcam is leading the way in addressing this with our range of recombinant monoclonal antibodies and knockout edited cell lines for gold-standard validation. Please check that this product meets your needs before purchasing.</p> <p>If you have any questions, special requirements or concerns, please send us an inquiry and/or contact our Support team ahead of purchase. Recommended alternatives for this product can be found below, along with publications, customer reviews and Q&amp;As</p>

#### Properties

---

<b>Form</b>	Liquid
<b>Storage instructions</b>	Shipped at 4°C. Store at +4°C short term (1-2 weeks). Upon delivery aliquot. Store at -20°C. Avoid freeze / thaw cycle.
<b>Storage buffer</b>	pH: 7.00 Preservative: 0.01% Thimerosal (merthiolate) Constituents: 1.21% Tris, 0.75% Glycine, 20% Glycerol (glycerin, glycerine)
<b>Purity</b>	Immunogen affinity purified
<b>Clonality</b>	Polyclonal
<b>Isotype</b>	IgG

## Applications

**The Abpromise guarantee** Our **Abpromise guarantee** covers the use of ab228902 in the following tested applications. The application notes include recommended starting dilutions; optimal dilutions/concentrations should be determined by the end user.

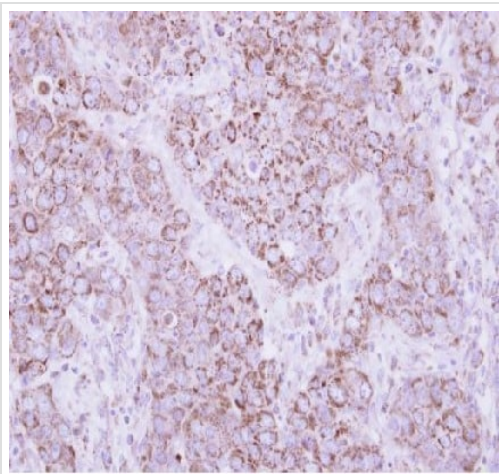
Application	Abreviews	Notes
WB		1/5000 - 1/20000. Predicted molecular weight: 53 kDa.
IHC-P		1/100 - 1/1000.

## Target

**Function** Acts as a regulatory subunit of the 26S proteasome which is involved in the ATP-dependent degradation of ubiquitinated proteins.

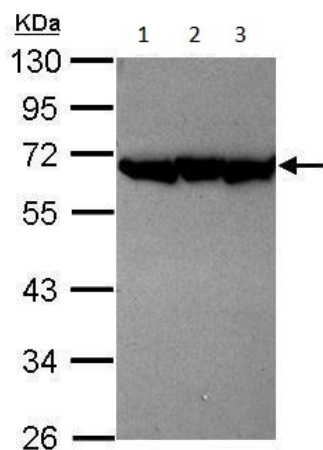
**Sequence similarities** Belongs to the proteasome subunit p55 family.  
Contains 1 PCI domain.

## Images



Paraffin-embedded human breast cancer tissue stained for PSMD12 protein using ab228902 at 1/500 dilution in immunohistochemical analysis.

Immunohistochemistry (Formalin/PFA-fixed paraffin-embedded sections) - Anti-PSMD12 antibody (ab228902)



Western blot - Anti-PSMD12 antibody (ab228902)

**All lanes :** Anti-PSMD12 antibody (ab228902) at 1/10000 dilution

**Lane 1 :** NT2/D1 (human embryonal testis carcinoma cell line) whole cell lysate

**Lane 2 :** IMR32 (human brain neuroblast cell line) whole cell lysate

**Lane 3 :** U87-MG (human glioblastoma-astrocytoma epithelial cell line) whole cell lysate

Lysates/proteins at 30 µg per lane.

Developed using the ECL technique.

**Predicted band size:** 53 kDa

10% SDS-PAGE gel.

**Please note:** All products are "FOR RESEARCH USE ONLY. NOT FOR USE IN DIAGNOSTIC PROCEDURES"

### Our Abpromise to you: Quality guaranteed and expert technical support

- Replacement or refund for products not performing as stated on the datasheet
- Valid for 12 months from date of delivery
- Response to your inquiry within 24 hours
- We provide support in Chinese, English, French, German, Japanese and Spanish
- Extensive multi-media technical resources to help you
- We investigate all quality concerns to ensure our products perform to the highest standards

If the product does not perform as described on this datasheet, we will offer a refund or replacement. For full details of the Abpromise, please visit <https://www.abcam.com/abpromise> or contact our technical team.

### Terms and conditions

- Guarantee only valid for products bought direct from Abcam or one of our authorized distributors