




Product datasheet

Anti-PSMD7/Mov34 antibody ab11436

[4 References](#) [4 Images](#)

Overview

Product name	Anti-PSMD7/Mov34 antibody
Description	Rabbit polyclonal to PSMD7/Mov34
Host species	Rabbit
Tested applications	Suitable for: ICC/IF, IHC-P, WB
Species reactivity	Reacts with: Human Predicted to work with: Cow, Drosophila melanogaster, Zebrafish 
Immunogen	Synthetic peptide corresponding to Human PSMD7/Mov34 aa 55-66. Sequence: AVPFDEDDKDDS (Peptide available as ab41795)  Run BLAST with  Run BLAST with
Positive control	WB: K-562, Hep G2, HeLa, Jurkat, HEK-293, U-2 OS and A549 cell lysates. ICC: Hep G2 cells. IHC-P: Human skin tissue.
General notes	<p>The Life Science industry has been in the grips of a reproducibility crisis for a number of years. Abcam is leading the way in addressing this with our range of recombinant monoclonal antibodies and knockout edited cell lines for gold-standard validation. Please check that this product meets your needs before purchasing.</p> <p>If you have any questions, special requirements or concerns, please send us an inquiry and/or contact our Support team ahead of purchase. Recommended alternatives for this product can be found below, along with publications, customer reviews and Q&As</p>

Properties

Form	Liquid
Storage instructions	Shipped at 4°C. Store at +4°C short term (1-2 weeks). Upon delivery aliquot. Store at -20°C. Avoid freeze / thaw cycle.
Storage buffer	Preservative: 0.05% Sodium azide Constituents: 99% PBS, 0.1% BSA
Purity	Immunogen affinity purified
Clonality	Polyclonal

Isotype

IgG

Applications

The Abpromise guarantee

Our **Abpromise guarantee** covers the use of ab11436 in the following tested applications.

The application notes include recommended starting dilutions; optimal dilutions/concentrations should be determined by the end user.

Application	Abreviews	Notes
ICC/IF		Use a concentration of 5 µg/ml.
IHC-P		Use a concentration of 1 µg/ml. Perform heat mediated antigen retrieval with citrate buffer pH 6 before commencing with IHC staining protocol.
WB		Use a concentration of 1 µg/ml. Detects a band of approximately 37 kDa.

Target

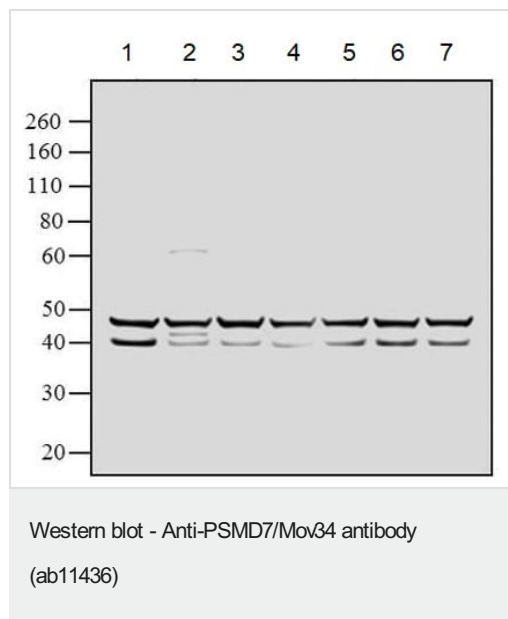
Function

Acts as a regulatory subunit of the 26S proteasome which is involved in the ATP-dependent degradation of ubiquitinated proteins.

Sequence similarities

Belongs to the peptidase M67A family.
Contains 1 MPN (JAB/Mov34) domain.

Images



All lanes : Anti-PSMD7/Mov34 antibody (ab11436) at 1 µg/ml

Lane 1 : K-652 whole cell lysate

Lane 2 : HepG2 whole cell lysate

Lane 3 : HeLa whole cell lysate

Lane 4 : Jurkat whole cell lysate

Lane 5 : HEK-293 whole cell lysate

Lane 6 : U-2 OS whole cell lysate

Lane 7 : A549 whole cell lysate

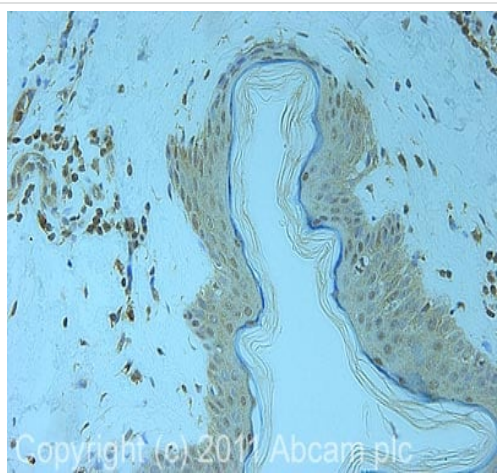
Lysates/proteins at 30 µg per lane.

Secondary

All lanes : Goat anti-Rabbit IgG (H+L) Superclonal™ Secondary Antibody, HRP conjugate at 0.25 µg/ml

Western blot analysis was performed on whole cell extracts (30 µg

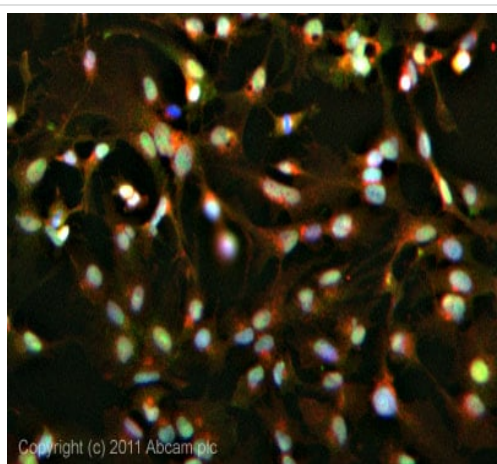
lysate). The blots were probed with ab11436 at 1 µg/ml and detected by chemiluminescence using Goat anti-Rabbit IgG (H+L) Superclonal™ Secondary Antibody, HRP conjugate (0.25 µg/mL, 1:4000 dilution). A 40 kDa band corresponding to PSMD7 was observed across the cell lines tested. In addition, a ~50 kDa band was observed, which could possibly represent the 26s Proteasome Subunit S5B. Known quantity of protein samples were electrophoresed and resolved proteins were then transferred onto a nitrocellulose membrane. The membrane was probed with the relevant primary and secondary Antibody following blocking with 5 % skimmed milk. Chemiluminescent detection was performed using Pierce™ ECL Western Blotting Substrate.



Immunohistochemistry (Formalin/PFA-fixed paraffin-embedded sections) - Anti-PSMD7/Mov34 antibody (ab11436)

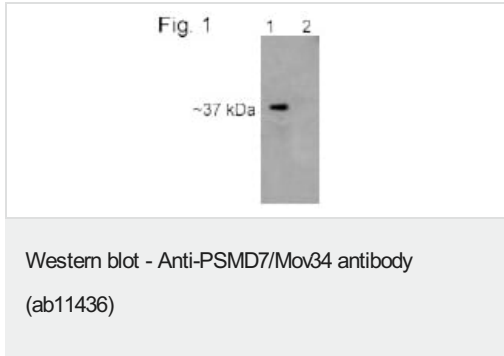
IHC image of ab11436 staining in human normal skin formalin fixed paraffin embedded tissue section, performed on a Leica Bond™ system using the standard protocol F. The section was pre-treated using heat mediated antigen retrieval with sodium citrate buffer (pH6, epitope retrieval solution 1) for 20 mins. The section was then incubated with ab11436, 1 µg/ml, for 15 mins at room temperature and detected using an HRP conjugated compact polymer system. DAB was used as the chromogen. The section was then counterstained with haematoxylin and mounted with DPX.

For other IHC staining systems (automated and non-automated) customers should optimize variable parameters such as antigen retrieval conditions, primary antibody concentration and antibody incubation times.



Immunocytochemistry/ Immunofluorescence - Anti-PSMD7/Mov34 antibody (ab11436)

ICC/IF image of ab11436 stained HepG2 cells. The cells were 4% formaldehyde fixed (10 min) and then incubated in 1%BSA / 10% normal goat serum / 0.3M glycine in 0.1% PBS-Tween for 1h to permeabilise the cells and block non-specific protein-protein interactions. The cells were then incubated with the antibody (ab11436, 5 µg/ml) overnight at +4°C. The secondary antibody (green) was [ab96899](#), DyLight® 488 goat anti-rabbit IgG (H+L) used at a 1/250 dilution for 1h. Alexa Fluor® 594 WGA was used to label plasma membranes (red) at a 1/200 dilution for 1h. DAPI was used to stain the cell nuclei (blue) at a concentration of 1.43 µM.



Western blot of PSDM7 in K562 cell lysate using ab11436.

Lane 1 is ab11436

Lane 2 is ab11436 pre-incubated with peptide

Please note: All products are "FOR RESEARCH USE ONLY. NOT FOR USE IN DIAGNOSTIC PROCEDURES"

Our Abpromise to you: Quality guaranteed and expert technical support

- Replacement or refund for products not performing as stated on the datasheet
- Valid for 12 months from date of delivery
- Response to your inquiry within 24 hours
- We provide support in Chinese, English, French, German, Japanese and Spanish
- Extensive multi-media technical resources to help you
- We investigate all quality concerns to ensure our products perform to the highest standards

If the product does not perform as described on this datasheet, we will offer a refund or replacement. For full details of the Abpromise, please visit <https://www.abcam.com/abpromise> or contact our technical team.

Terms and conditions

- Guarantee only valid for products bought direct from Abcam or one of our authorized distributors