




## Product datasheet

# Anti-PSME1 antibody ab236877

4 Images

### Overview

---

<b>Product name</b>	Anti-PSME1 antibody
<b>Description</b>	Rabbit polyclonal to PSME1
<b>Host species</b>	Rabbit
<b>Tested applications</b>	<b>Suitable for:</b> WB, IP, IHC-P
<b>Species reactivity</b>	<b>Reacts with:</b> Mouse, Human <b>Predicted to work with:</b> Rat, Cow, Pig, Cynomolgus monkey 
<b>Immunogen</b>	Recombinant full length protein corresponding to Human PSME1 aa 1 to the C-terminus. Database link: <a href="#">Q06323-1</a>  <a href="#">Run BLAST with</a>  <a href="#">Run BLAST with</a>
<b>Positive control</b>	WB: Mouse liver tissue lysate. Raji whole cell lysate. IHC-P: Human liver cancer and testis tissues. IP: Jurkat whole cell lysate.
<b>General notes</b>	<p>The Life Science industry has been in the grips of a reproducibility crisis for a number of years. Abcam is leading the way in addressing this with our range of recombinant monoclonal antibodies and knockout edited cell lines for gold-standard validation. Please check that this product meets your needs before purchasing.</p> <p>If you have any questions, special requirements or concerns, please send us an inquiry and/or contact our Support team ahead of purchase. Recommended alternatives for this product can be found below, along with publications, customer reviews and Q&amp;As</p>

### Properties

---

<b>Form</b>	Liquid
<b>Storage instructions</b>	Shipped at 4°C. Store at +4°C short term (1-2 weeks). Upon delivery aliquot. Store at -20°C long term. Avoid freeze / thaw cycle.
<b>Storage buffer</b>	pH: 7.30 Preservative: 0.02% Sodium azide Constituents: PBS, 50% Glycerol (glycerin, glycerine)
<b>Purity</b>	Immunogen affinity purified
<b>Clonality</b>	Polyclonal
<b>Isotype</b>	IgG

## Applications

**The Abpromise guarantee** Our **Abpromise guarantee** covers the use of ab236877 in the following tested applications. The application notes include recommended starting dilutions; optimal dilutions/concentrations should be determined by the end user.

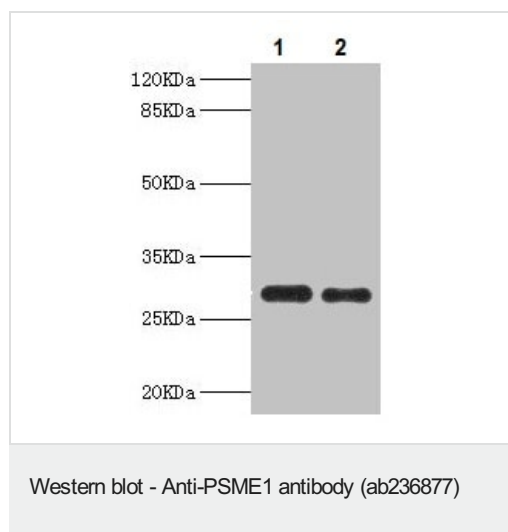
Application	Abreviews	Notes
WB		1/500 - 1/2000. Predicted molecular weight: 29 kDa.
IP		1/200 - 1/2000.
IHC-P		1/20 - 1/200.

## Target

**Function** Implicated in immunoproteasome assembly and required for efficient antigen processing. The PA28 activator complex enhances the generation of class I binding peptides by altering the cleavage pattern of the proteasome.

**Sequence similarities** Belongs to the PA28 family.

## Images



**All lanes** : Anti-PSME1 antibody (ab236877) at 1/500 dilution

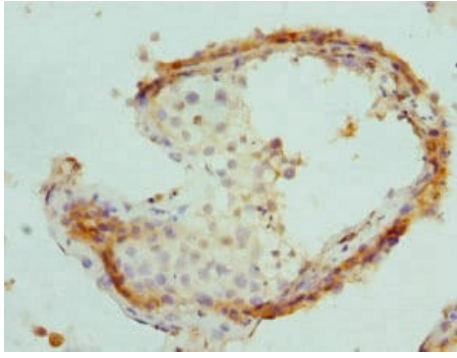
**Lane 1** : Mouse liver tissue lysate

**Lane 2** : Raji (human Burkitt's lymphoma cell line) whole cell lysate

### Secondary

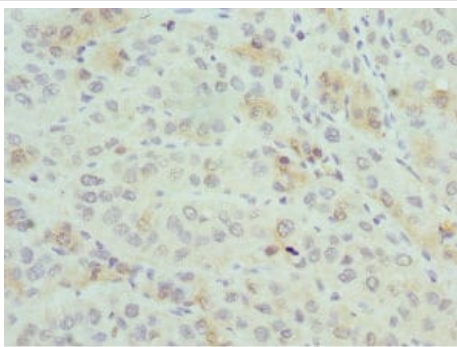
**All lanes** : Goat polyclonal to rabbit IgG at 1/10000 dilution

**Predicted band size:** 29 kDa



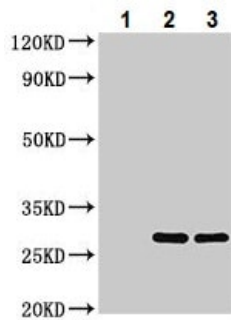
Immunohistochemistry (Formalin/PFA-fixed paraffin-embedded sections) - Anti-PSME1 antibody (ab236877)

Paraffin-embedded human testis tissue stained for PSME1 using ab236877 at 1/100 dilution in immunohistochemical analysis.



Immunohistochemistry (Formalin/PFA-fixed paraffin-embedded sections) - Anti-PSME1 antibody (ab236877)

Paraffin-embedded human liver cancer tissue stained for PSME1 using ab236877 at 1/100 dilution in immunohistochemical analysis.



Immunoprecipitation - Anti-PSME1 antibody (ab236877)

PSME1 was immunoprecipitated from Jurkat (Human T cell leukemia cell line from peripheral blood) whole cell lysate using ab236877 at 1/200 dilution.

**Lane 1:** Rabbit control IgG in Jurkat whole cell lysate.

**Lane 2:** ab236877 in Jurkat whole cell lysate.

**Lane 3:** Jurkat whole cell lysate (10 µg input).

For western blotting an HRP-conjugated Protein G antibody was used as the secondary antibody at a 1/2000 dilution.

**Please note:** All products are "FOR RESEARCH USE ONLY. NOT FOR USE IN DIAGNOSTIC PROCEDURES"

**Our Abpromise to you: Quality guaranteed and expert technical support**

- Replacement or refund for products not performing as stated on the datasheet

- Valid for 12 months from date of delivery
- Response to your inquiry within 24 hours
  
- We provide support in Chinese, English, French, German, Japanese and Spanish
- Extensive multi-media technical resources to help you
- We investigate all quality concerns to ensure our products perform to the highest standards

If the product does not perform as described on this datasheet, we will offer a refund or replacement. For full details of the Abpromise, please visit <https://www.abcam.com/abpromise> or contact our technical team.

### **Terms and conditions**

---

- Guarantee only valid for products bought direct from Abcam or one of our authorized distributors