


Product datasheet

Anti-PSME1 antibody [EPR10968(B)] ab155985

Recombinant RabMAb

★★★★★ [1 Abreviews](#) [5 Images](#)

Overview

Product name	Anti-PSME1 antibody [EPR10968(B)]
Description	Rabbit monoclonal [EPR10968(B)] to PSME1
Host species	Rabbit
Tested applications	Suitable for: WB, IHC-P Unsuitable for: ELISA, Flow Cyt, ICC/IF or IP
Species reactivity	Reacts with: Human Predicted to work with: Mouse, Rat 
Immunogen	Synthetic peptide. This information is proprietary to Abcam and/or its suppliers.
Positive control	Raji, MCF-7 and Jurkat cell lysates; Human pancreas and prostate tissues. WB: Wild-Type HEK-293T, MCF7, Jurkat cell lysate
General notes	<p>This product is a recombinant monoclonal antibody, which offers several advantages including:</p> <ul style="list-style-type: none"> - High batch-to-batch consistency and reproducibility - Improved sensitivity and specificity - Long-term security of supply - Animal-free production <p>For more information see here.</p> <p>Our RabMAb[®] technology is a patented hybridoma-based technology for making rabbit monoclonal antibodies. For details on our patents, please refer to RabMAb[®] patents.</p>

Properties

Form	Liquid
Storage instructions	Shipped at 4°C. Store at -20°C.
Storage buffer	pH: 7.2 Preservative: 0.01% Sodium azide Constituents: 9% PBS, 40% Glycerol (glycerin, glycerine), 0.05% BSA, 50% Tissue culture supernatant
Purity	Protein A purified
Clonality	Monoclonal

Clone number EPR10968(B)

Isotype IgG

Applications

The Abpromise guarantee Our **Abpromise guarantee** covers the use of ab155985 in the following tested applications. The application notes include recommended starting dilutions; optimal dilutions/concentrations should be determined by the end user.

Application	Abreviews	Notes
WB	★★★★★ (1)	1/1000 - 1/10000. Predicted molecular weight: 29 kDa.
IHC-P		1/50 - 1/100. Perform heat mediated antigen retrieval with citrate buffer pH 6 before commencing with IHC staining protocol.

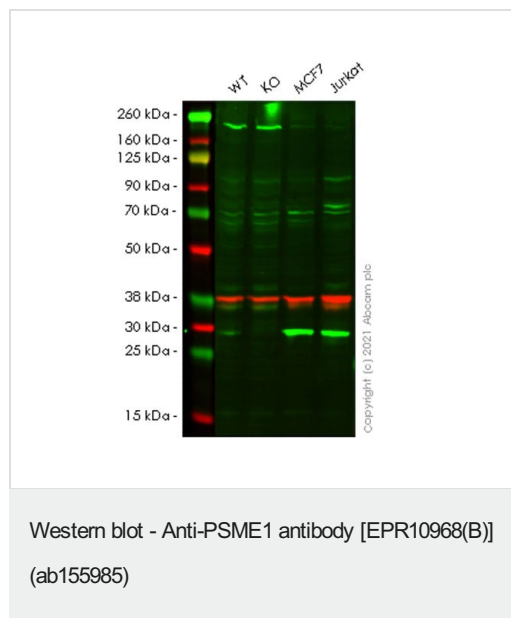
Application notes Is unsuitable for ELISA, Flow Cyt, ICC/IF or IP.

Target

Function Implicated in immunoproteasome assembly and required for efficient antigen processing. The PA28 activator complex enhances the generation of class I binding peptides by altering the cleavage pattern of the proteasome.

Sequence similarities Belongs to the PA28 family.

Images



All lanes : Anti-PSME1 antibody [EPR10968(B)] (ab155985) at 1/1000 dilution

Lane 1 : Wild-type HEK-293T (human embryonic kidney epithelial cell) whole cell lysate

Lane 2 : PSME1 knockout HEK-293T (human embryonic kidney epithelial cell) whole cell lysate

Lane 3 : MCF7 (human breast adenocarcinoma epithelial cell) whole cell lysate

Lane 4 : Jurkat (human T cell leukemia T lymphocyte) whole cell lysate

Lysates/proteins at 20 µg per lane.

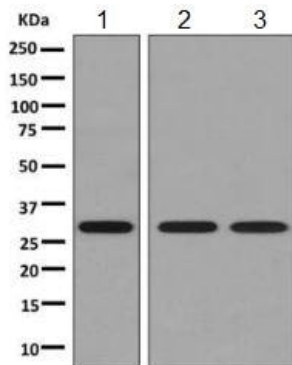
Secondary

All lanes : Goat anti-Mouse IgG H&L (IRDye® 680RD) preadsorbed (**ab216776**) at 1/10000 dilution

Predicted band size: 29 kDa

Blocking and diluting buffer: Intercept® (TBS) Blocking Buffer
diluted with an equal volume of 0.1% TBS

Lanes 1-4: Merged signal (red and green). Green - ab155985
observed at 29 kDa. Red - loading control **ab8245** observed at 36
kDa.



Western blot - Anti-PSME1 antibody [EPR10968(B)]
(ab155985)

All lanes : Anti-PSME1 antibody [EPR10968(B)] (ab155985) at
1/1000 dilution

Lane 1 : Raji cell lysate

Lane 2 : MCF-7 cell lysate

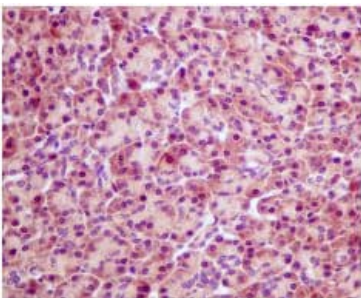
Lane 3 : Jurkat cell lysate

Lysates/proteins at 10 µg per lane.

Secondary

All lanes : Goat anti-rabbit HRP at 1/2000 dilution

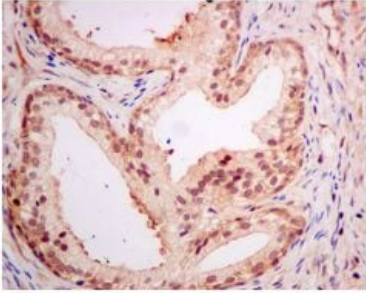
Predicted band size: 29 kDa



Immunohistochemistry (Formalin/PFA-fixed paraffin-
embedded sections) - Anti-PSME1 antibody
[EPR10968(B)] (ab155985)

Immunohistochemical analysis of paraffin-embedded Human
pancreas tissue labeling PSME1 with ab155985 at 1/50 dilution.

Perform heat mediated antigen retrieval with citrate buffer pH 6
before commencing with IHC staining protocol.

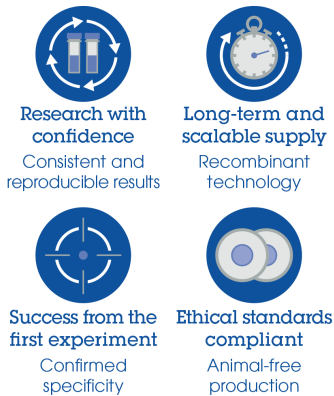


Immunohistochemistry (Formalin/PFA-fixed paraffin-embedded sections) - Anti-PSME1 antibody [EPR10968(B)] (ab155985)

Immunohistochemical analysis of paraffin-embedded Human prostate tissue labeling PSME1 with ab155985 at 1/50 dilution.

Perform heat mediated antigen retrieval with citrate buffer pH 6 before commencing with IHC staining protocol.

Why choose a recombinant antibody?



Anti-PSME1 antibody [EPR10968(B)] (ab155985)

Please note: All products are "FOR RESEARCH USE ONLY. NOT FOR USE IN DIAGNOSTIC PROCEDURES"

Our Abpromise to you: Quality guaranteed and expert technical support

- Replacement or refund for products not performing as stated on the datasheet
- Valid for 12 months from date of delivery
- Response to your inquiry within 24 hours
- We provide support in Chinese, English, French, German, Japanese and Spanish
- Extensive multi-media technical resources to help you
- We investigate all quality concerns to ensure our products perform to the highest standards

If the product does not perform as described on this datasheet, we will offer a refund or replacement. For full details of the Abpromise, please visit <https://www.abcam.com/abpromise> or contact our technical team.

Terms and conditions

- Guarantee only valid for products bought direct from Abcam or one of our authorized distributors