

Product datasheet

Anti-PSME2 antibody [EPR14931] α ab183727

Recombinant RabMAb

★★★★★ [2 Abreviews](#) [4 References](#) [11 Images](#)

Overview

Product name	Anti-PSME2 antibody [EPR14931]
Description	Rabbit monoclonal [EPR14931] to PSME2
Host species	Rabbit
Tested applications	Suitable for: WB, ICC/IF, IHC-P, Flow Cyt (Intra), Indirect ELISA
Species reactivity	Reacts with: Mouse, Rat, Human
Immunogen	Synthetic peptide. This information is proprietary to Abcam and/or its suppliers.
Positive control	WB: HeLa, PC3, PC12, Neuro-2a, 4T1, and HepG2 whole cell lysates (ab7900); IHC-P: Human kidney clear cell carcinoma and stomach tissues; ICC/IF: HeLa and HepG2 cells. Flow Cyt (intra): HepG2 and Neuro-2a cells.
General notes	<p>This product is a recombinant monoclonal antibody, which offers several advantages including:</p> <ul style="list-style-type: none"> - High batch-to-batch consistency and reproducibility - Improved sensitivity and specificity - Long-term security of supply - Animal-free production <p>For more information see here.</p> <p>Our RabMAb[®] technology is a patented hybridoma-based technology for making rabbit monoclonal antibodies. For details on our patents, please refer to RabMAb[®] patents.</p>

Properties

Form	Liquid
Storage instructions	Shipped at 4°C. Store at +4°C short term (1-2 weeks). Upon delivery aliquot. Store at -20°C long term. Avoid freeze / thaw cycle.
Storage buffer	<p>pH: 7.2</p> <p>Preservative: 0.01% Sodium azide</p> <p>Constituents: 40% Glycerol, 59% PBS, 0.05% BSA</p>
Purity	Protein A purified
Clonality	Monoclonal
Clone number	EPR14931

Isotype

IgG

Applications

The Abpromise guarantee Our **Abpromise guarantee** covers the use of ab183727 in the following tested applications. The application notes include recommended starting dilutions; optimal dilutions/concentrations should be determined by the end user.

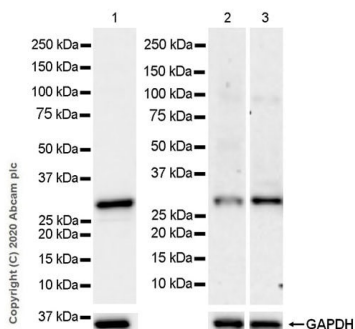
Application	Abreviews	Notes
WB	★★★★★ (2)	1/1000 - 1/10000. Detects a band of approximately 27 kDa (predicted molecular weight: 27 kDa).
ICC/IF		1/500.
IHC-P		1/50 - 1/100. Perform heat mediated antigen retrieval with Tris/EDTA buffer pH 9.0 before commencing with IHC staining protocol.
Flow Cyt (Intra)		1/200 - 1/500. ab172730 - Rabbit monoclonal IgG, is suitable for use as an isotype control with this antibody.
Indirect ELISA		Use a concentration of 0.002 - 1 µg/ml.

Target

Function Implicated in immunoproteasome assembly and required for efficient antigen processing. The PA28 activator complex enhances the generation of class I binding peptides by altering the cleavage pattern of the proteasome.

Sequence similarities Belongs to the PA28 family.

Images



Western blot - Anti-PSME2 antibody [EPR14931] (ab183727)

All lanes : Anti-PSME2 antibody [EPR14931] (ab183727) at 1/1000 dilution

Lane 1 : PC-12 (rat adrenal gland pheochromocytoma) whole cell lysate

Lane 2 : Neuro-2a (mouse neuroblastoma neuroblast) whole cell lysate

Lane 3 : 4T1 (mouse mammary gland carcinoma epithelial cell) whole cell lysate

Lysates/proteins at 20 µg per lane.

Secondary

All lanes : Goat Anti-Rabbit IgG H&L (HRP) ([ab97051](#)) at 1/20000 dilution

Predicted band size: 27 kDa

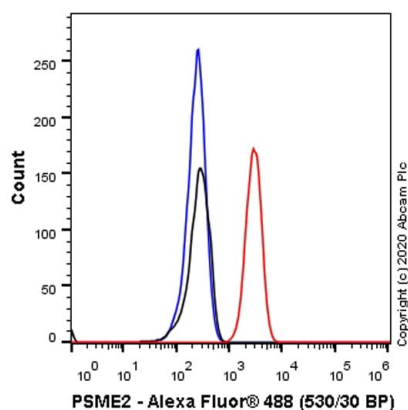
Observed band size: 27 kDa

Exposure times:

Lane 1: 3.25 seconds

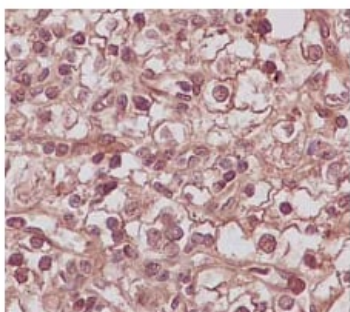
Lane 2: 3 minutes

Blocking Buffer and concentration: 5% NFDM/TBST



Flow Cytometry (Intracellular) - Anti-PSME2 antibody [EPR14931] (ab183727)

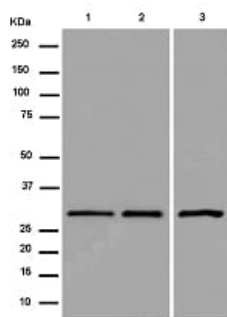
Intracellular flow cytometric analysis of 4% paraformaldehyde fixed 90% methanol permeabilized HepG2 (Human hepatocellular carcinoma epithelial cell) cells labelling PSME2 with ab183727 at 1/500 dilution (0.1 µg) (Red) compared with a Rabbit monoclonal IgG ([ab172730](#)) (Black) isotype control and an unlabelled control (cells without incubation with primary antibody and secondary antibody) (Blue). A Goat anti rabbit IgG (Alexa Fluor® 488, [ab150077](#)) at 1/2000 dilution was used as the secondary antibody.



Immunohistochemistry (Formalin/PFA-fixed paraffin-embedded sections) - Anti-PSME2 antibody [EPR14931] (ab183727)

Immunohistochemical analysis of paraffin-embedded Human kidney clear cell carcinoma tissue labeling PSME2 with ab183727 at 1/100 dilution, followed by pre-diluted HRP-conjugated secondary antibody and counter-stained with Hematoxylin.

Perform heat mediated antigen retrieval with EDTA buffer pH 9 before commencing with IHC staining protocol.



Western blot - Anti-PSME2 antibody [EPR14931] (ab183727)

All lanes : Anti-PSME2 antibody [EPR14931] (ab183727) at 1/10000 dilution

Lane 1 : HeLa cell lysate

Lane 2 : PC3 cell lysate

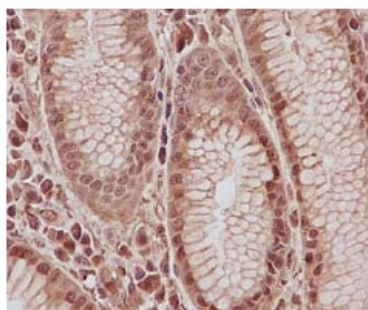
Lane 3 : HepG2 cell lysate

Lysates/proteins at 20 µg per lane.

Secondary

All lanes : Goat Anti-Rabbit IgG, (H+L), Peroxidase conjugate at 1/1000 dilution

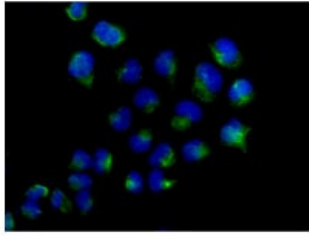
Predicted band size: 27 kDa



Immunohistochemistry (Formalin/PFA-fixed paraffin-embedded sections) - Anti-PSME2 antibody [EPR14931] (ab183727)

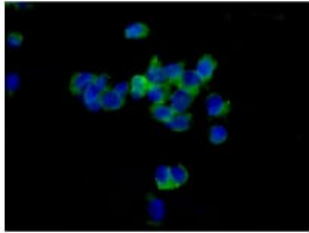
Immunohistochemical analysis of paraffin-embedded Human stomach tissue labeling PSME2 with ab183727 at 1/100 dilution, followed by pre-diluted HRP-conjugated secondary antibody and counter-stained with Hematoxylin.

Perform heat mediated antigen retrieval with EDTA buffer pH 9 before commencing with IHC staining protocol.



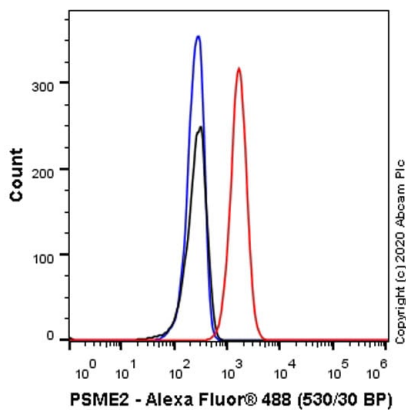
Immunocytochemistry/ Immunofluorescence - Anti-PSME2 antibody [EPR14931] (ab183727)

Immunofluorescent analysis of HeLa cells (-20°C acetone-fixed) labeling PSME2 with ab183727 at 1/500 dilution, followed by Goat anti rabbit IgG (AlexaFluor® 488) secondary at 1/200 dilution and counter-stained with DAPI (blue).



Immunocytochemistry/ Immunofluorescence - Anti-PSME2 antibody [EPR14931] (ab183727)

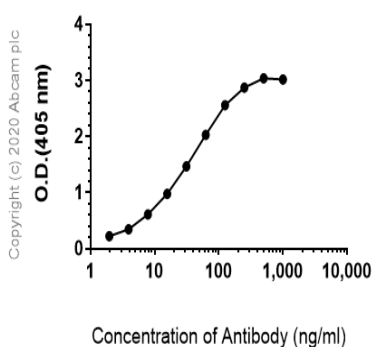
Immunofluorescent analysis of HepG2 cells (paraformaldehyde-fixed, 4%) labeling PSME2 with ab183727 at 1/500 dilution, followed by Goat anti rabbit IgG (AlexaFluor® 488) secondary at 1/200 dilution and counter-stained with DAPI (blue).



Flow Cytometry (Intracellular) - Anti-PSME2 antibody [EPR14931] (ab183727)

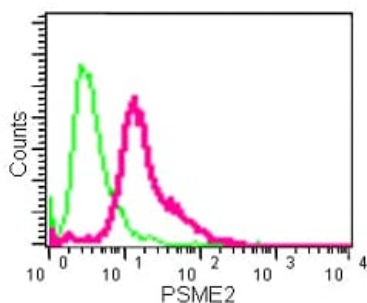
Intracellular flow cytometric analysis of 4% paraformaldehyde fixed 90% methanol permeabilized Neuro-2a (Mouse neuroblastoma neuroblast) cells labelling PSME2 with ab183727 at 1/500 dilution (0.1µg) (Red) compared with a Rabbit monoclonal IgG (**ab172730**) (Black) isotype control and an unlabelled control (cells without incubation with primary antibody and secondary antibody) (Blue). A Goat anti rabbit IgG (Alexa Fluor® 488, **ab150077**) at 1/2000 dilution was used as the secondary antibody.

Indirect ELISA antibody dose-response curve
antigen at 250 ng/ml



Indirect ELISA - Anti-PSME2 antibody [EPR14931]
(ab183727)





ELISA analysis of Human PSME2 recombinant protein at 250 ng/mL with ab183727. An Alkaline Phosphatase-conjugated AffiniPure Goat Anti-Rabbit IgG (H+L) at 1/2500 dilution was used as the secondary antibody.



Flow Cytometry (Intracellular) - Anti-PSME2
antibody [EPR14931] (ab183727)

Intracellular flow cytometric analysis of HeLa cells (paraformaldehyde-fixed, 2%) labeling PSME2 with ab183727 at 1/210 dilution (red) or a rabbit IgG (negative) (green), followed by Goat anti rabbit IgG (FITC) secondary at 1/150 dilution.

Why choose a recombinant antibody?

 <p>Research with confidence Consistent and reproducible results</p>	 <p>Long-term and scalable supply Recombinant technology</p>
 <p>Success from the first experiment Confirmed specificity</p>	 <p>Ethical standards compliant Animal-free production</p>

Anti-PSME2 antibody [EPR14931] (ab183727)

Please note: All products are "FOR RESEARCH USE ONLY. NOT FOR USE IN DIAGNOSTIC PROCEDURES"

Our Abpromise to you: Quality guaranteed and expert technical support

- Replacement or refund for products not performing as stated on the datasheet
- Valid for 12 months from date of delivery
- Response to your inquiry within 24 hours
- We provide support in Chinese, English, French, German, Japanese and Spanish
- Extensive multi-media technical resources to help you
- We investigate all quality concerns to ensure our products perform to the highest standards

If the product does not perform as described on this datasheet, we will offer a refund or replacement. For full details of the Abpromise, please visit <https://www.abcam.com/abpromise> or contact our technical team.

Terms and conditions

- Guarantee only valid for products bought direct from Abcam or one of our authorized distributors