




Product datasheet

Anti-PSMF1 antibody ab140497

★★★★★ [1 Abreviews](#) [1 References](#) [2 Images](#)

Overview

Product name	Anti-PSMF1 antibody
Description	Rabbit polyclonal to PSMF1
Host species	Rabbit
Tested applications	Suitable for: WB, IP
Species reactivity	Reacts with: Human Predicted to work with: Mouse, Rat, Rabbit, Horse, Cow, Dog, Pig, Chimpanzee, Rhesus monkey, Gorilla, Chinese hamster, Orangutan, Bat 
Immunogen	Synthetic peptide corresponding to Human PSMF1 aa 221-271. Sequence: LIDPSSGLPNRLPPGAVPPGARFDPFGPIGTSPPGPNPDH LPPPGYDDMYL Database link: NP_848693.2  Run BLAST with  Run BLAST with
Positive control	293T, HeLa, Jurkat whole cell lysate (ab7899)
General notes	<p>The Life Science industry has been in the grips of a reproducibility crisis for a number of years. Abcam is leading the way in addressing this with our range of recombinant monoclonal antibodies and knockout edited cell lines for gold-standard validation. Please check that this product meets your needs before purchasing.</p> <p>If you have any questions, special requirements or concerns, please send us an inquiry and/or contact our Support team ahead of purchase. Recommended alternatives for this product can be found below, along with publications, customer reviews and Q&As</p>

Properties

Form	Liquid
Storage instructions	Shipped at 4°C. Upon delivery aliquot and store at -20°C. Avoid freeze / thaw cycles.
Storage buffer	pH: 7 Preservative: 0.09% Sodium azide Constituent: 99% Tris citrate/phosphate

	pH: 7 to 8
Purity	Immunogen affinity purified
Purification notes	ab140497 was affinity purified using an epitope specific to PSMF1 immobilized on a solid support.
Clonality	Polyclonal
Isotype	IgG

Applications

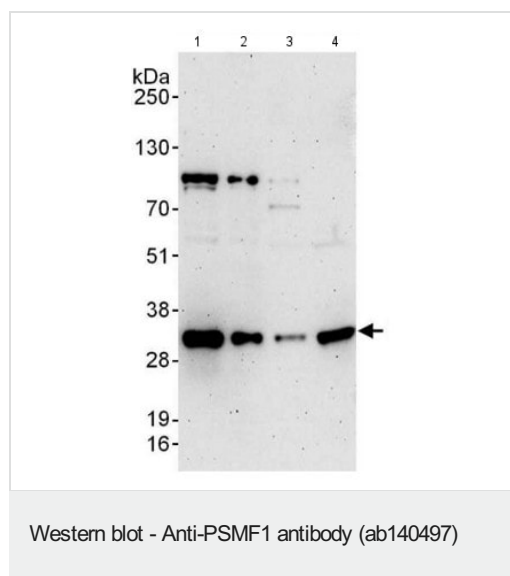
The Abpromise guarantee Our **Abpromise guarantee** covers the use of ab140497 in the following tested applications.
The application notes include recommended starting dilutions; optimal dilutions/concentrations should be determined by the end user.

Application	Abreviews	Notes
WB	★★★★★ (1)	1/1000 - 1/5000. Predicted molecular weight: 30 kDa.
IP		Use at 2-10 µg/mg of lysate.

Target

Function	Plays an important role in control of proteasome function. Inhibits the hydrolysis of protein and peptide substrates by the 20S proteasome. Also inhibits the activation of the proteasome by the proteasome regulatory proteins PA700 and PA28.
Sequence similarities	Belongs to the proteasome inhibitor PI31 family.

Images



All lanes : Anti-PSMF1 antibody (ab140497) at 0.4 µg/ml

Lane 1 : 293T whole cell lysate at 50 µg

Lane 2 : 293T whole cell lysate at 15 µg

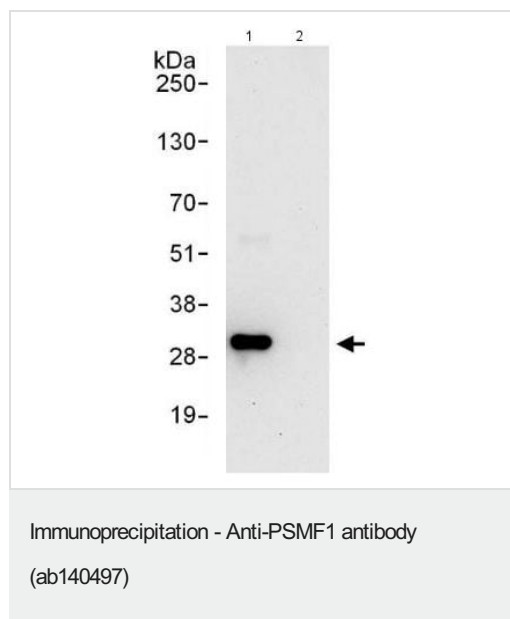
Lane 3 : HeLa whole cell lysate at 50 µg

Lane 4 : Jurkat whole cell lysate at 50 µg

Developed using the ECL technique.

Predicted band size: 30 kDa

Exposure time: 3 minutes



ab140497 at 1 µg/ml detecting PSMF1 in 293T whole cell lysate by WB following IP.

Lane 1: ab140497 at 6µg/mg of lysate

Lane 2: control IgG.

In each case, 1 mg of lysate was used for IP and 20% of the IP was loaded.

Detection: Chemiluminescence with an exposure time of 30 seconds.

Please note: All products are "FOR RESEARCH USE ONLY. NOT FOR USE IN DIAGNOSTIC PROCEDURES"

Our Abpromise to you: Quality guaranteed and expert technical support

- Replacement or refund for products not performing as stated on the datasheet
- Valid for 12 months from date of delivery
- Response to your inquiry within 24 hours
- We provide support in Chinese, English, French, German, Japanese and Spanish
- Extensive multi-media technical resources to help you
- We investigate all quality concerns to ensure our products perform to the highest standards

If the product does not perform as described on this datasheet, we will offer a refund or replacement. For full details of the Abpromise, please visit <https://www.abcam.com/abpromise> or contact our technical team.

Terms and conditions

- Guarantee only valid for products bought direct from Abcam or one of our authorized distributors