



Product datasheet

Anti-PSMF1 antibody ab187200

★☆☆☆☆ [1 Abreviews](#) [1 References](#) [2 Images](#)

Overview

Product name	Anti-PSMF1 antibody
Description	Rabbit polyclonal to PSMF1
Host species	Rabbit
Tested applications	Suitable for: WB, IHC-P
Species reactivity	Reacts with: Mouse, Human
Immunogen	Recombinant full length protein corresponding to Human PSMF1 aa 1 to the C-terminus. Database link: Q92530
	<div>  Run BLAST with  Run BLAST with </div>
Positive control	SW480, A549 and K562 cell extracts; Mouse liver and testis tissue extracts.
General notes	<p>The Life Science industry has been in the grips of a reproducibility crisis for a number of years. Abcam is leading the way in addressing this with our range of recombinant monoclonal antibodies and knockout edited cell lines for gold-standard validation. Please check that this product meets your needs before purchasing.</p> <p>If you have any questions, special requirements or concerns, please send us an inquiry and/or contact our Support team ahead of purchase. Recommended alternatives for this product can be found below, along with publications, customer reviews and Q&As</p>

Properties

Form	Liquid
Storage instructions	Shipped at 4°C. Store at +4°C short term (1-2 weeks). Upon delivery aliquot. Store at -20°C long term. Avoid freeze / thaw cycle.
Storage buffer	pH: 7.30 Preservative: 0.02% Sodium azide Constituents: 50% Glycerol, 49% PBS
Purity	Immunogen affinity purified
Clonality	Polyclonal
Isotype	IgG

Applications

The Abpromise guarantee

Our **Abpromise guarantee** covers the use of ab187200 in the following tested applications.

The application notes include recommended starting dilutions; optimal dilutions/concentrations should be determined by the end user.

Application	Abreviews	Notes
WB	★☆☆☆☆ (1)	1/500 - 1/2000. Predicted molecular weight: 30 kDa.
IHC-P		1/50 - 1/200.

Target

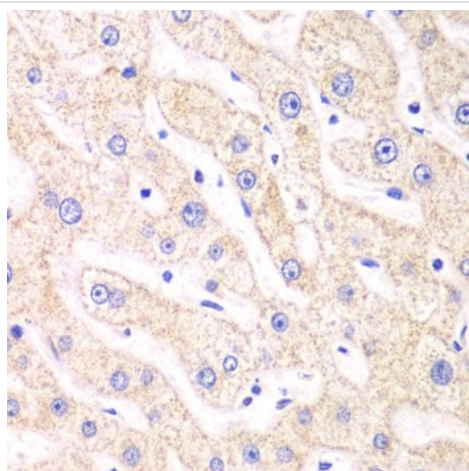
Function

Plays an important role in control of proteasome function. Inhibits the hydrolysis of protein and peptide substrates by the 20S proteasome. Also inhibits the activation of the proteasome by the proteasome regulatory proteins PA700 and PA28.

Sequence similarities

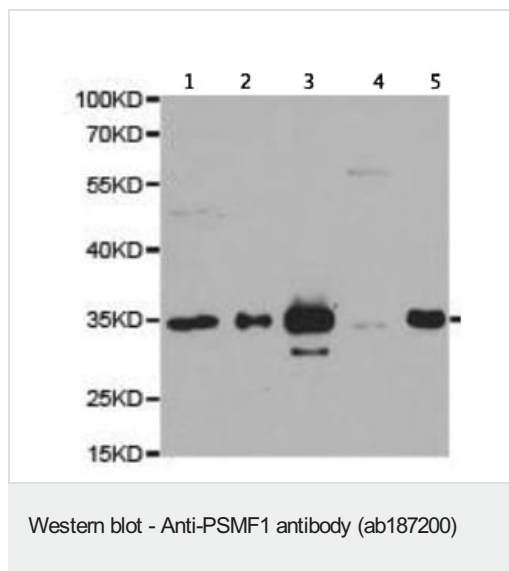
Belongs to the proteasome inhibitor PI31 family.

Images



ab187200 Immunohistochemistry of paraffin-embedded human liver injury using PSMF1 antibody at dilution of 1:100 (x40 lens).

Immunohistochemistry (Formalin/PFA-fixed paraffin-embedded sections) - Anti-PSMF1 antibody (ab187200)



All lanes : Anti-PSMF1 antibody (ab187200) at 1/500 dilution

Lane 1 : SW480 cell extract

Lane 2 : A549 cell extract

Lane 3 : K562 cell extract

Lane 4 : Mouse liver tissue extract

Lane 5 : Mouse testis tissue extract

Predicted band size: 30 kDa

Please note: All products are "FOR RESEARCH USE ONLY. NOT FOR USE IN DIAGNOSTIC PROCEDURES"

Our Abpromise to you: Quality guaranteed and expert technical support

- Replacement or refund for products not performing as stated on the datasheet
- Valid for 12 months from date of delivery
- Response to your inquiry within 24 hours
- We provide support in Chinese, English, French, German, Japanese and Spanish
- Extensive multi-media technical resources to help you
- We investigate all quality concerns to ensure our products perform to the highest standards

If the product does not perform as described on this datasheet, we will offer a refund or replacement. For full details of the Abpromise, please visit <https://www.abcam.com/abpromise> or contact our technical team.

Terms and conditions

- Guarantee only valid for products bought direct from Abcam or one of our authorized distributors