




Anti-PSPH antibody ab224110

[1 References](#) [5 Images](#)

Overview

Product name	Anti-PSPH antibody
Description	Rabbit polyclonal to PSPH
Host species	Rabbit
Tested applications	Suitable for: WB, IHC-P
Species reactivity	Reacts with: Human Predicted to work with: Mouse, Rat, Cow, Orangutan 
Immunogen	Recombinant fragment corresponding to Human PSPH aa 1-150. Database link: P78330 <div>  Run BLAST with  Run BLAST with </div>
Positive control	WB: A431 cell lysate. IHC-P: Human Fallopian tube, kidney and endometrium tissue.
General notes	<p>The Life Science industry has been in the grips of a reproducibility crisis for a number of years. Abcam is leading the way in addressing this with our range of recombinant monoclonal antibodies and knockout edited cell lines for gold-standard validation. Please check that this product meets your needs before purchasing.</p> <p>If you have any questions, special requirements or concerns, please send us an inquiry and/or contact our Support team ahead of purchase. Recommended alternatives for this product can be found below, along with publications, customer reviews and Q&As</p>

Properties

Form	Liquid
Storage instructions	Shipped at 4°C. Store at +4°C short term (1-2 weeks). Upon delivery aliquot. Store at -20°C long term. Avoid freeze / thaw cycle.
Storage buffer	pH: 7.20 Preservative: 0.02% Sodium azide Constituents: 40% Glycerol (glycerin, glycerine), PBS
Purity	Immunogen affinity purified
Clonality	Polyclonal
Isotype	IgG

Applications

The Abpromise guarantee

Our **Abpromise guarantee** covers the use of ab224110 in the following tested applications.

The application notes include recommended starting dilutions; optimal dilutions/concentrations should be determined by the end user.

Application	Abreviews	Notes
WB		Use a concentration of 0.04 - 0.4 µg/ml. Predicted molecular weight: 25 kDa.
IHC-P		1/200 - 1/500. Perform heat mediated antigen retrieval with citrate buffer pH 6 before commencing with IHC staining protocol.

Target

Function

Catalyzes the last step in the biosynthesis of serine from carbohydrates. The reaction mechanism proceeds via the formation of a phosphoryl-enzyme intermediates.

Pathway

Amino-acid biosynthesis; L-serine biosynthesis; L-serine from 3-phospho-D-glycerate: step 3/3.

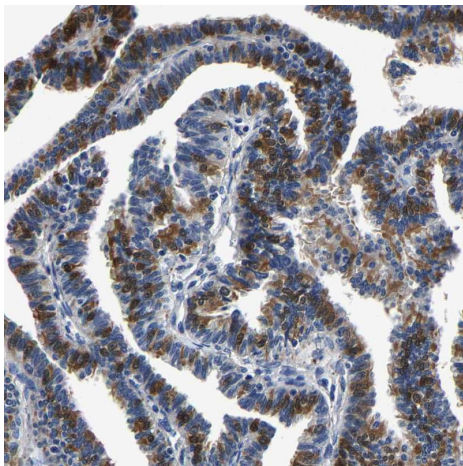
Involvement in disease

Defects in PSPH are the cause of phosphoserine phosphatase deficiency (PSPHD) [MIM:614023]. A disorder that results in pre- and postnatal growth retardation, moderate psychomotor retardation and facial features suggestive of Williams syndrome.

Sequence similarities

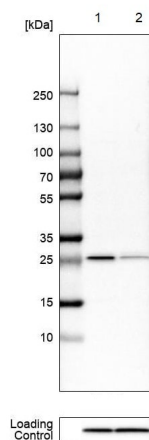
Belongs to the SerB family.

Images



Paraffin-embedded human Fallopian tube tissue stained for PSPH using ab224110 at 1/500 dilution in immunohistochemical analysis.

Immunohistochemistry (Formalin/PFA-fixed paraffin-embedded sections) - Anti-PSPH antibody (ab224110)



Western blot - Anti-PSPH antibody (ab224110)

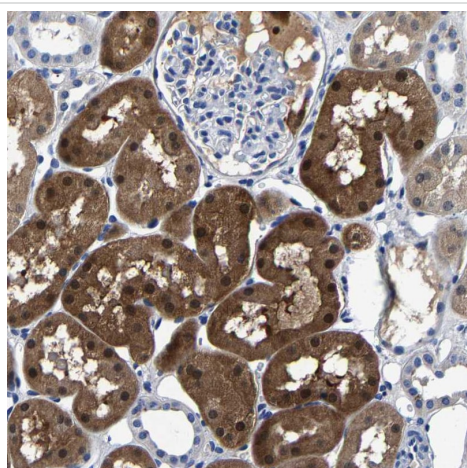
All lanes : Anti-PSPH antibody (ab224110) at 0.04 $\mu\text{g/ml}$

Lane 1 : A431 (Human epidermoid carcinoma cell line) whole cell lysate

Lane 2 : HeLa (Human epithelial cell line from cervix adenocarcinoma) whole cell lysate

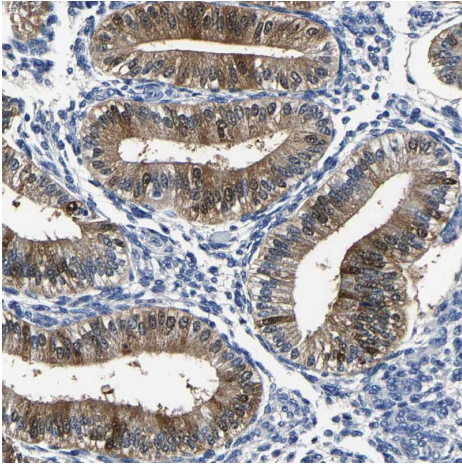
Predicted band size: 25 kDa

Western blot analysis labeling PSPH with ab224110 at 0.04 $\mu\text{g/ml}$.



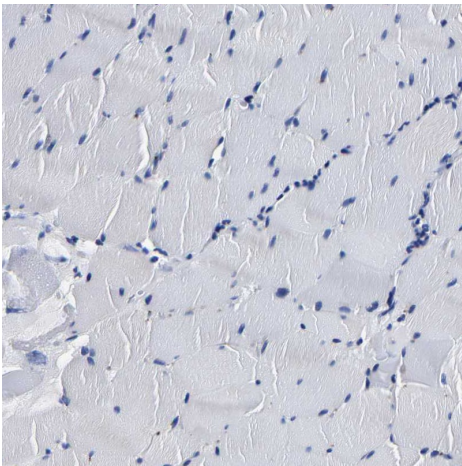
Immunohistochemistry (Formalin/PFA-fixed paraffin-embedded sections) - Anti-PSPH antibody (ab224110)

Paraffin-embedded human kidney tissue stained for PSPH using ab224110 at 1/500 dilution in immunohistochemical analysis.



Immunohistochemistry (Formalin/PFA-fixed paraffin-embedded sections) - Anti-PSPH antibody (ab224110)

Paraffin-embedded human endometrium tissue stained for PSPH using ab224110 at 1/500 dilution in immunohistochemical analysis.



Immunohistochemistry (Formalin/PFA-fixed paraffin-embedded sections) - Anti-PSPH antibody (ab224110)

Paraffin-embedded human skeletal muscle tissue stained for PSPH using ab224110 at 1/500 dilution in immunohistochemical analysis. No positivity observed.

Please note: All products are "FOR RESEARCH USE ONLY. NOT FOR USE IN DIAGNOSTIC PROCEDURES"

Our Abpromise to you: Quality guaranteed and expert technical support

- Replacement or refund for products not performing as stated on the datasheet
- Valid for 12 months from date of delivery
- Response to your inquiry within 24 hours
- We provide support in Chinese, English, French, German, Japanese and Spanish
- Extensive multi-media technical resources to help you
- We investigate all quality concerns to ensure our products perform to the highest standards

If the product does not perform as described on this datasheet, we will offer a refund or replacement. For full details of the Abpromise,

please visit <https://www.abcam.com/abpromise> or contact our technical team.

Terms and conditions

- Guarantee only valid for products bought direct from Abcam or one of our authorized distributors