


Product datasheet

Anti-PTBP1 antibody [EPR9048(B)] ab133734

KO VALIDATED Recombinant RabMAb

[17 References](#) [7 Images](#)

Overview

Product name	Anti-PTBP1 antibody [EPR9048(B)]
Description	Rabbit monoclonal [EPR9048(B)] to PTBP1
Host species	Rabbit
Tested applications	Suitable for: WB, IHC-P, ICC/IF, Flow Cyt (Intra) Unsuitable for: IP
Species reactivity	Reacts with: Mouse, Human Predicted to work with: Rat 
Immunogen	Synthetic peptide. This information is proprietary to Abcam and/or its suppliers.
Positive control	WB: HeLa, HAP1, Jurkat, Daudi, A549 and BxPC3 cell lysates. Human fetal liver tissue lysate. IHC-P: Human breast carcinoma tissue. Flow Cyt (intra): A549 cells.
General notes	This product is a recombinant monoclonal antibody, which offers several advantages including: <ul style="list-style-type: none"> - High batch-to-batch consistency and reproducibility - Improved sensitivity and specificity - Long-term security of supply - Animal-free production For more information see here . Our RabMAb [®] technology is a patented hybridoma-based technology for making rabbit monoclonal antibodies. For details on our patents, please refer to RabMAb[®] patents .

Properties

Form	Liquid
Storage instructions	Shipped at 4°C. Upon delivery aliquot and store at -20°C. Avoid repeated freeze / thaw cycles.
Storage buffer	pH: 7.20 Preservative: 0.01% Sodium azide Constituents: 9% PBS, 40% Glycerol (glycerin, glycerine), 0.05% BSA, 50% Tissue culture supernatant
Purity	Protein A purified
Clonality	Monoclonal

Clone number EPR9048(B)
Isotype IgG

Applications

The Abpromise guarantee Our **Abpromise guarantee** covers the use of ab133734 in the following tested applications.
The application notes include recommended starting dilutions; optimal dilutions/concentrations should be determined by the end user.

Application	Abreviews	Notes
WB		1/10000 - 1/50000. Predicted molecular weight: 57 kDa.
IHC-P		1/100 - 1/250. Perform heat mediated antigen retrieval with citrate buffer pH 6 before commencing with IHC staining protocol. Perform antigen retrieval before commencing with IHC staining protocol.
ICC/IF		1/250 - 1/500.
Flow Cyt (Intra)		1/2000.

Application notes Is unsuitable for IP.

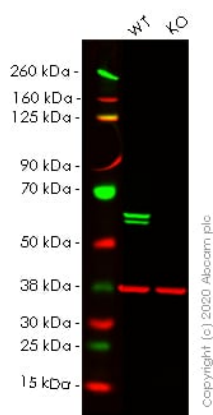
Target

Function Plays a role in pre-mRNA splicing and in the regulation of alternative splicing events. Binds to the polypyrimidine tract of introns. May promote RNA looping when bound to two separate polypyrimidine tracts in the same pre-mRNA. May promote the binding of U2 snRNP to pre-mRNA. Cooperates with RAVR1 to modulate switching between mutually exclusive exons during maturation of the TPM1 pre-mRNA.

Sequence similarities Contains 4 RRM (RNA recognition motif) domains.

Cellular localization Nucleus.

Images



Western blot - Anti-PTBP1 antibody [EPR9048(B)] (ab133734)

All lanes : Anti-PTBP1 antibody [EPR9048(B)] (ab133734) at 1/10000 dilution

Lane 1 : Wild-type HeLa cell lysate

Lane 2 : PTBP1 knockout HeLa cell lysate

Lysates/proteins at 20 µg per lane.

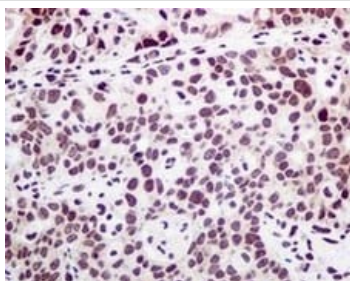
Performed under reducing conditions.

Predicted band size: 57 kDa

Observed band size: 57 kDa

Lanes 1- 2: Merged signal (red and green). Green - ab133734 observed at 57 kDa. Red - Anti-GAPDH antibody [6C5] - Loading Control ([ab8245](#)) observed at 37 kDa.

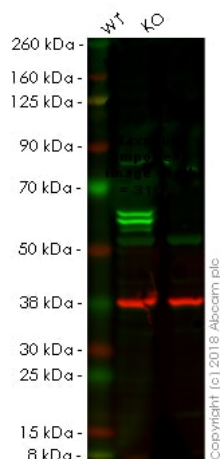
ab133734 was shown to react with PTBP1 in wild-type HeLa cells in western blot. Loss of signal was observed when knockout cell line [ab265155](#) (knockout cell lysate [ab257614](#)) was used. Wild-type HeLa and PTBP1 knockout HeLa cell lysates were subjected to SDS-PAGE. Membrane was blocked for 1 hour at room temperature in 0.1% TBST with 3% non-fat dried milk. ab133734 and Anti-GAPDH antibody [6C5] - Loading Control ([ab8245](#)) overnight at 4°C at a 1 in 10000 dilution and a 1 in 20000 dilution respectively. Blots were developed with Goat anti-Rabbit IgG H&L (IRDye®800CW) preadsorbed ([ab216773](#)) and Goat anti-Mouse IgG H&L (IRDye®680RD) preadsorbed ([ab216776](#)) secondary antibodies at 1 in 20000 dilution for 1 hour at room temperature before imaging.



Immunohistochemistry (Formalin/PFA-fixed paraffin-embedded sections) - Anti-PTBP1 antibody [EPR9048(B)] (ab133734)

Immunohistochemical analysis of PTBP1 in paraffin embedded Human breast carcinoma tissue stained with ab133734 at a 1/100 dilution.

Perform heat mediated antigen retrieval with citrate buffer pH 6 before commencing with IHC staining protocol.



Western blot - Anti-PTBP1 antibody [EPR9048(B)] (ab133734)

All lanes : Anti-PTBP1 antibody [EPR9048(B)] (ab133734) at 1/1000 dilution

Lane 1 : Wild-type HAP1 whole cell lysate

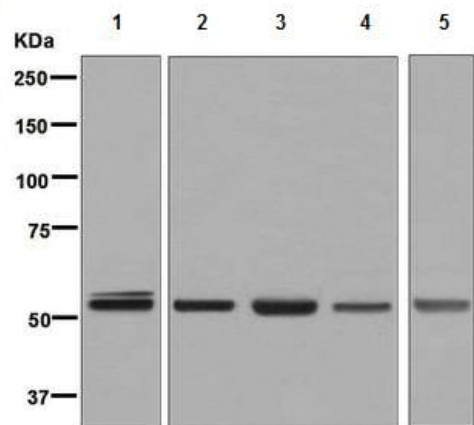
Lane 2 : PTBP1 knockout HAP1 whole cell lysate

Lysates/proteins at 20 µg per lane.

Predicted band size: 57 kDa

Lanes 1 - 2: Merged signal (red and green). Green - ab133734 observed at 57 kDa. Red - loading control, **ab9484**, observed at 37 kDa.

ab133734 was shown to recognize PTBP1 in wild-type HAP1 cells as signal was lost at the expected MW in PTBP1 knockout cells. Additional cross-reactive bands were observed in the wild-type and knockout cells. Wild-type and PTBP1 knockout samples were subjected to SDS-PAGE. Ab133734 and **ab9484** (Mouse anti-GAPDH loading control) were incubated overnight at 4°C at 1/10000 dilution and 1/20000 dilution respectively. Blots were developed with Goat anti-Rabbit IgG H&L (IRDye® 800CW) preabsorbed **ab216773** and Goat anti-Mouse IgG H&L (IRDye® 680RD) preabsorbed **ab216776** secondary antibodies at 1/10000 dilution for 1 hour at room temperature before imaging.



Western blot - Anti-PTBP1 antibody [EPR9048(B)] (ab133734)

All lanes : Anti-PTBP1 antibody [EPR9048(B)] (ab133734) at 1/10000 dilution

Lane 1 : Human fetal liver lysate

Lane 2 : Jurkat cell lysate

Lane 3 : Daudi cell lysate

Lane 4 : A549 cell lysate

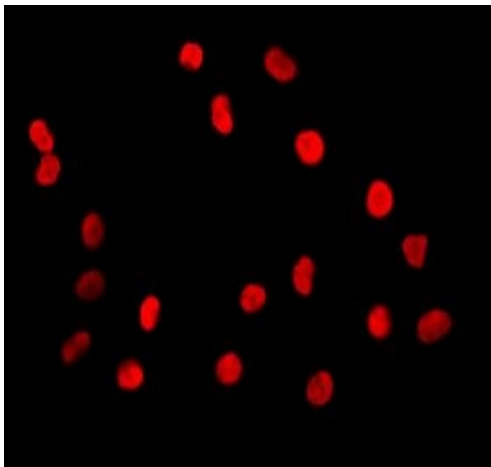
Lane 5 : BxPC3 cell lysate

Lysates/proteins at 10 µg per lane.

Secondary

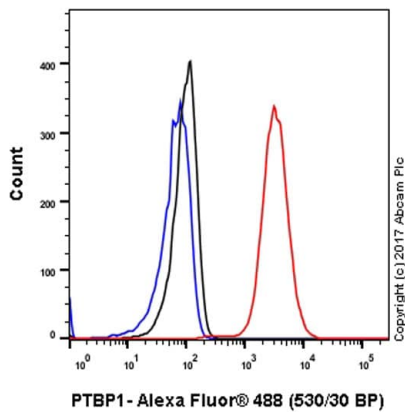
All lanes : Goat anti-rabbit HRP conjugated antibody at 1/2000 dilution

Predicted band size: 57 kDa



Immunocytochemistry/ Immunofluorescence - Anti-PTBP1 antibody [EPR9048(B)] (ab133734)

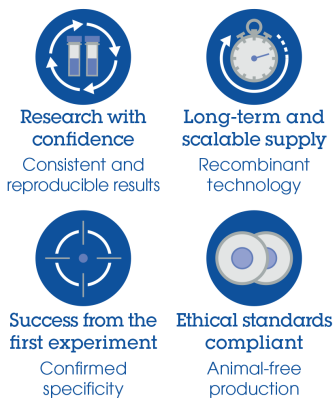
Immunofluorescent staining of PTBP1 in A549 cells, using ab133734 at a 1/250 dilution.



Flow Cytometry (Intracellular) - Anti-PTBP1 antibody [EPR9048(B)] (ab133734)

Intracellular Flow Cytometry analysis of A549 (Human lung carcinoma epithelial cell) cells labeling PTBP1 (red) with purified ab133734 at a 1/2000 dilution (1ug/mL). Cells were fixed with 4% paraformaldehyde and permeabilized with 90% methanol. A goat anti rabbit IgG (Alexa Fluor® 488) ([ab150077](#)) was used as the secondary antibody at a 1/2000 dilution. Black - Rabbit monoclonal IgG (Black) ([ab172730](#)). Blue (unlabeled control) - Cell without incubation with primary antibody and secondary antibody (Blue).

Why choose a recombinant antibody?



Anti-PTBP1 antibody [EPR9048(B)] (ab133734)

Please note: All products are "FOR RESEARCH USE ONLY. NOT FOR USE IN DIAGNOSTIC PROCEDURES"

Our Abpromise to you: Quality guaranteed and expert technical support

- Replacement or refund for products not performing as stated on the datasheet
- Valid for 12 months from date of delivery
- Response to your inquiry within 24 hours

- We provide support in Chinese, English, French, German, Japanese and Spanish
- Extensive multi-media technical resources to help you
- We investigate all quality concerns to ensure our products perform to the highest standards

If the product does not perform as described on this datasheet, we will offer a refund or replacement. For full details of the Abpromise, please visit <https://www.abcam.com/abpromise> or contact our technical team.

Terms and conditions

- Guarantee only valid for products bought direct from Abcam or one of our authorized distributors