

Anti-PTBP2 antibody ab228930

6 Images

Overview

Product name	Anti-PTBP2 antibody
Description	Rabbit polyclonal to PTBP2
Host species	Rabbit
Tested applications	Suitable for: WB, IHC-P, ICC/IF
Species reactivity	Reacts with: Mouse, Rat, Human
Immunogen	Recombinant fragment within Human PTBP2 (internal sequence). The exact sequence is proprietary. Database link: Q9UKA9
Positive control	IHC-P: Mouse muscle and hindbrain tissue. Rat hindbrain tissue. WB: Mouse eye tissue extracts. A549, NCI-H129 and HCT 116 whole cell lysate. ICC/IF: HeLa cells.
General notes	<p>The Life Science industry has been in the grips of a reproducibility crisis for a number of years. Abcam is leading the way in addressing this with our range of recombinant monoclonal antibodies and knockout edited cell lines for gold-standard validation. Please check that this product meets your needs before purchasing.</p> <p>If you have any questions, special requirements or concerns, please send us an inquiry and/or contact our Support team ahead of purchase. Recommended alternatives for this product can be found below, along with publications, customer reviews and Q&As</p>

Properties

Form	Liquid
Storage instructions	Shipped at 4°C. Store at +4°C short term (1-2 weeks). Upon delivery aliquot. Store at -20°C long term. Avoid freeze / thaw cycle.
Storage buffer	pH: 7.00 Preservative: 0.01% Thimerosal (merthiolate) Constituents: 79.99% PBS, 20% Glycerol (glycerin, glycerine)
Purity	Immunogen affinity purified
Clonality	Polyclonal
Isotype	IgG

Applications

The Abpromise guarantee

Our **Abpromise guarantee** covers the use of ab228930 in the following tested applications.

The application notes include recommended starting dilutions; optimal dilutions/concentrations should be determined by the end user.

Application	Abreviews	Notes
WB		1/500 - 1/3000. Predicted molecular weight: 57 kDa.
IHC-P		1/100 - 1/1000.
ICC/IF		1/100 - 1/1000.

Target

Function

RNA-binding protein which binds to intronic polypyrimidine tracts and mediates negative regulation of exons splicing. May antagonize in a tissue-specific manner the ability of NOVA1 to activate exon selection. Beside its function in pre-mRNA splicing, plays also a role in the regulation of translation. Isoform 5 has a reduced affinity for RNA.

Tissue specificity

Mainly expressed in brain although also detected in other tissues like heart and skeletal muscle. Isoform 1 and isoform 2 are specifically expressed in neuronal tissues. Isoform 3 and isoform 4 are expressed in non-neuronal tissues. Isoform 5 and isoform 6 are truncated forms expressed in non-neuronal tissues.

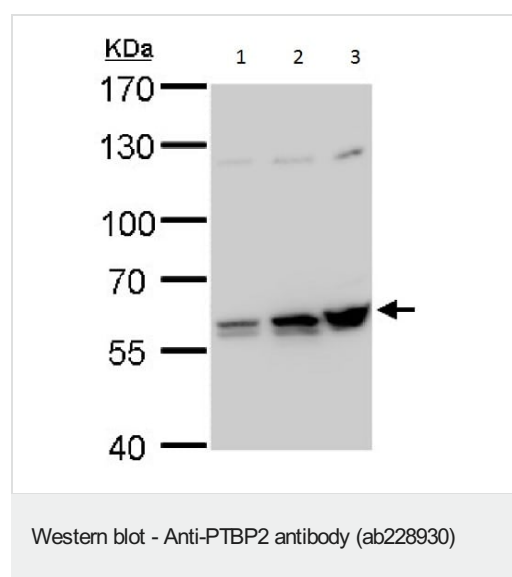
Sequence similarities

Contains 4 RRM (RNA recognition motif) domains.

Cellular localization

Nucleus.

Images



All lanes : Anti-PTBP2 antibody (ab228930) at 1/2000 dilution

Lane 1 : A549 (human lung carcinoma cell line) whole cell lysate

Lane 2 : NCI-H1299 (human lung carcinoma cell line) whole cell lysate

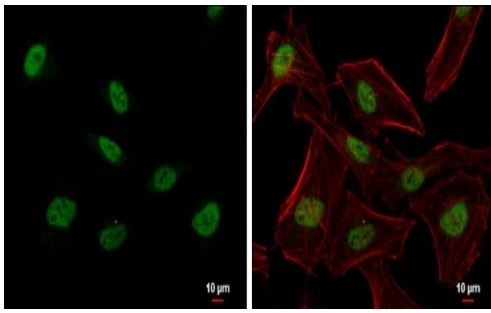
Lane 3 : HCT 116 (human colorectal carcinoma cell line) whole cell lysate

Lysates/proteins at 30 µg per lane.

Developed using the ECL technique.

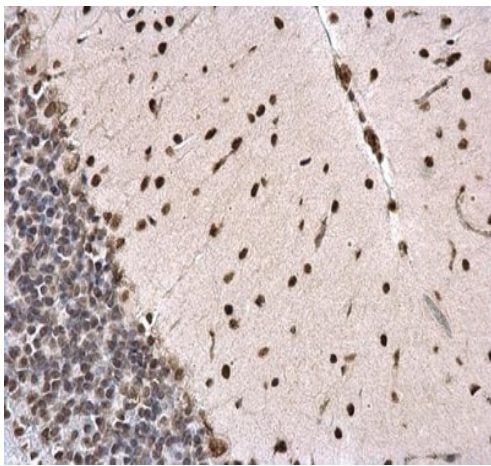
Predicted band size: 57 kDa

7.5% SDS-PAGE



Immunocytochemistry/ Immunofluorescence - Anti-PTBP2 antibody (ab228930)

HeLa (human epithelial cell line from cervix adenocarcinoma) cells stained for PTBP2 (green) using ab228930 (1/500 dilution) in ICC/IF. Cells were fixed in 4% paraformaldehyde at RT for 15 minutes. Counterstain: Hoechst 33342 (blue), phalloidin cytoskeletal marker (red).



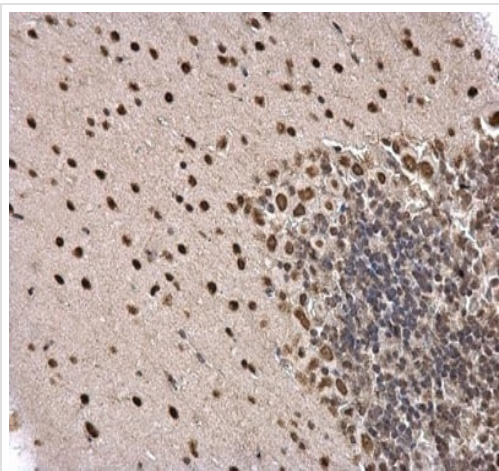
Immunohistochemistry (Formalin/PFA-fixed paraffin-embedded sections) - Anti-PTBP2 antibody (ab228930)

Paraffin-embedded rat hindbrain tissue stained for PTBP2 with ab228930 at a 1/500 dilution in immunohistochemical analysis.



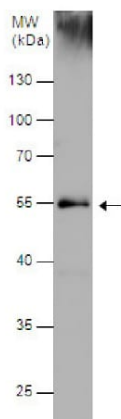
Immunohistochemistry (Formalin/PFA-fixed paraffin-embedded sections) - Anti-PTBP2 antibody (ab228930)

Paraffin-embedded mouse muscle tissue stained for PTBP2 with ab228930 at a 1/500 dilution in immunohistochemical analysis.



Immunohistochemistry (Formalin/PFA-fixed paraffin-embedded sections) - Anti-PTBP2 antibody (ab228930)

Paraffin-embedded mouse hindbrain tissue stained for PTBP2 with ab228930 at a 1/500 dilution in immunohistochemical analysis.



Western blot - Anti-PTBP2 antibody (ab228930)

Anti-PTBP2 antibody (ab228930) at 1/1000 dilution + Mouse eye tissue extracts at 50 µg

Developed using the ECL technique.

Predicted band size: 57 kDa

10% SDS-PAGE

Please note: All products are "FOR RESEARCH USE ONLY. NOT FOR USE IN DIAGNOSTIC PROCEDURES"

Our Abpromise to you: Quality guaranteed and expert technical support

- Replacement or refund for products not performing as stated on the datasheet
- Valid for 12 months from date of delivery
- Response to your inquiry within 24 hours
- We provide support in Chinese, English, French, German, Japanese and Spanish
- Extensive multi-media technical resources to help you
- We investigate all quality concerns to ensure our products perform to the highest standards

If the product does not perform as described on this datasheet, we will offer a refund or replacement. For full details of the Abpromise, please visit <https://www.abcam.com/abpromise> or contact our technical team.

Terms and conditions

- Guarantee only valid for products bought direct from Abcam or one of our authorized distributors