

# Anti-PTCD1 antibody ab121620

2 Images

### Overview

|                            |   |
|----------------------------|---|
| <b>Product name</b>        | Anti-PTCD1 antibody   |
| <b>Description</b>         | Rabbit polyclonal to PTCD1  |
| <b>Host species</b>        | Rabbit  |
| <b>Tested applications</b> | <b>Suitable for:</b> IHC-P, WB  |
| <b>Species reactivity</b>  | <b>Reacts with:</b> Human   |
| <b>Immunogen</b>           | antigen, corresponding to amino acids 435-537 of Human PTCD1.   |
| <b>Positive control</b>    | Human placenta tissue; RT4 and U 251 MG lysates.  |
| <b>General notes</b>       | <p>The Life Science industry has been in the grips of a reproducibility crisis for a number of years. Abcam is leading the way in addressing this with our range of recombinant monoclonal antibodies and knockout edited cell lines for gold-standard validation. Please check that this product meets your needs before purchasing.</p> <p>If you have any questions, special requirements or concerns, please send us an inquiry and/or contact our Support team ahead of purchase. Recommended alternatives for this product can be found below, along with publications, customer reviews and Q&amp;As</p> |

### Properties

|                             |  |
|-----------------------------|--|
| <b>Form</b>                 | Liquid   |
| <b>Storage instructions</b> | Shipped at 4°C. Upon delivery aliquot and store at -20°C. Avoid freeze / thaw cycles.                                    |
| <b>Storage buffer</b>       | <p>pH: 7.20</p> <p>Preservative: 0.02% Sodium azide</p> <p>Constituents: 59% PBS, 40% Glycerol (glycerin, glycerine)</p> |
| <b>Purity</b>               | Immunogen affinity purified  |
| <b>Clonality</b>            | Polyclonal   |
| <b>Isotype</b>              | IgG  |

### Applications

**The Abpromise guarantee** Our **Abpromise guarantee** covers the use of ab121620 in the following tested applications. The application notes include recommended starting dilutions; optimal dilutions/concentrations should be determined by the end user.

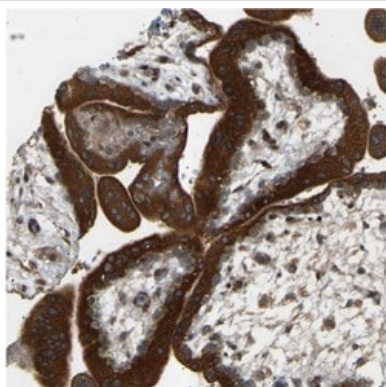
| Application | Abreviews | Notes  |
|-------------|-----------|--|
| IHC-P       |           | 1/50 - 1/200. Perform heat mediated antigen retrieval with citrate buffer pH 6 before commencing with IHC staining protocol. Use buffer at pH 6 for antigen retrieval. |
| WB          |           | Use a concentration of 0.04 - 0.4 µg/ml.   |

## Target

## Sequence similarities

Contains 9 PPR (pentatricopeptide) repeats.

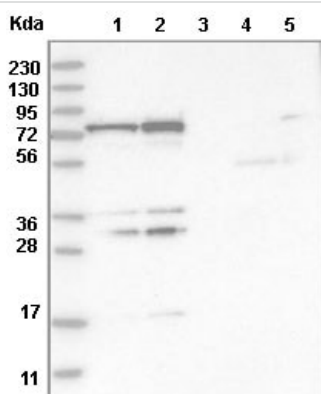
## Images



ab121620 at 1/125 staining PTCD1 in Paraffin Embedded Human placenta tissue by Immunohistochemistry.

Note: strong cytoplasmic positivity in trophoblastic cells.

Immunohistochemistry (Formalin/PFA-fixed paraffin-embedded sections) - Anti-PTCD1 antibody (ab121620)



**All lanes :** Anti-PTCD1 antibody (ab121620) at 1/250 dilution

**Lane 1 :** RT4 lysate

**Lane 2 :** U 251 MG lysate

**Lane 3 :** Human plasma

**Lane 4 :** Human Liver lysate

**Lane 5 :** Human Tonsil lysate

Developed using the ECL technique.

Western blot - Anti-PTCD1 antibody (ab121620)

**Please note:** All products are "FOR RESEARCH USE ONLY. NOT FOR USE IN DIAGNOSTIC PROCEDURES"

### **Our Abpromise to you: Quality guaranteed and expert technical support**

---

- Replacement or refund for products not performing as stated on the datasheet
- Valid for 12 months from date of delivery
- Response to your inquiry within 24 hours
  
- We provide support in Chinese, English, French, German, Japanese and Spanish
- Extensive multi-media technical resources to help you
- We investigate all quality concerns to ensure our products perform to the highest standards

If the product does not perform as described on this datasheet, we will offer a refund or replacement. For full details of the Abpromise, please visit <https://www.abcam.com/abpromise> or contact our technical team.

### **Terms and conditions**

---

- Guarantee only valid for products bought direct from Abcam or one of our authorized distributors