


Product datasheet

Anti-PTCHD1 antibody ab109407

[1 Abreviews](#) [1 Image](#)

Overview

Product name	Anti-PTCHD1 antibody
Description	Goat polyclonal to PTCHD1
Host species	Goat
Tested applications	Suitable for: WB
Species reactivity	Reacts with: Human Predicted to work with: Mouse, Rat, Chicken, Cow, Dog, Pig 
Immunogen	Synthetic peptide: C-DFQKTSRVSER , corresponding to internal sequence amino acids 260-270 of Human PTCHD1 (NP_775766.2). Run BLAST with Run BLAST with
Positive control	Human Brain (Cerebellum) lysate.
General notes	<p>The Life Science industry has been in the grips of a reproducibility crisis for a number of years. Abcam is leading the way in addressing this with our range of recombinant monoclonal antibodies and knockout edited cell lines for gold-standard validation. Please check that this product meets your needs before purchasing.</p> <p>If you have any questions, special requirements or concerns, please send us an inquiry and/or contact our Support team ahead of purchase. Recommended alternatives for this product can be found below, along with publications, customer reviews and Q&As</p>

Properties

Form	Liquid
Storage instructions	Shipped at 4°C. Upon delivery aliquot and store at -20°C. Avoid freeze / thaw cycles.
Storage buffer	pH: 7.30 Preservative: 0.02% Sodium azide Constituents: Tris buffered saline, 0.5% BSA
Purity	Immunogen affinity purified
Purification notes	ab109407 was purified from goat serum by ammonium sulphate precipitation followed by antigen affinity chromatography using the immunizing peptide.
Clonality	Polyclonal

Isotype

IgG

Applications

The Abpromise guarantee

Our **Abpromise guarantee** covers the use of ab109407 in the following tested applications.

The application notes include recommended starting dilutions; optimal dilutions/concentrations should be determined by the end user.

Application	Abreviews	Notes
WB		Use a concentration of 0.5 - 2 µg/ml. Detects a band of approximately 100 kDa (predicted molecular weight: 101 kDa). 1 hour primary incubation is recommended for this product.

Target

Tissue specificity

Widely expressed, including in various regions of the brain with highest expression in the gray and white cerebellum, followed by the cerebellar vermis and the pituitary gland.

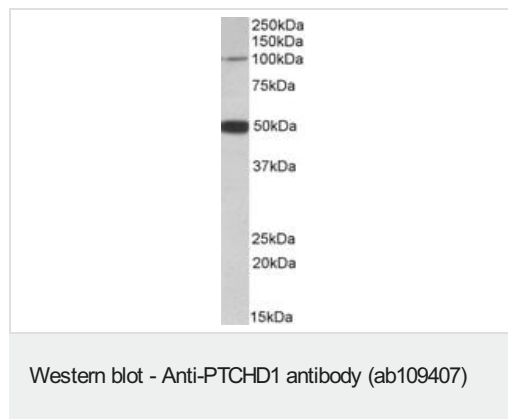
Sequence similarities

Belongs to the patched family.
Contains 1 SSD (sterol-sensing) domain.

Cellular localization

Cell membrane.

Images



Anti-PTCHD1 antibody (ab109407) at 0.5 µg/ml + Human Brain
Cerebellum lysate in RIPA buffer at 35 µg

Developed using the ECL technique.

Predicted band size: 101 kDa

An additional band of unknown identity was also consistently observed at 50kDa. This band was successfully blocked by incubation with the immunizing peptide.

Please note: All products are "FOR RESEARCH USE ONLY. NOT FOR USE IN DIAGNOSTIC PROCEDURES"

Our Abpromise to you: Quality guaranteed and expert technical support

- Replacement or refund for products not performing as stated on the datasheet
- Valid for 12 months from date of delivery
- Response to your inquiry within 24 hours

- We provide support in Chinese, English, French, German, Japanese and Spanish
- Extensive multi-media technical resources to help you
- We investigate all quality concerns to ensure our products perform to the highest standards

If the product does not perform as described on this datasheet, we will offer a refund or replacement. For full details of the Abpromise, please visit <https://www.abcam.com/abpromise> or contact our technical team.

Terms and conditions

- Guarantee only valid for products bought direct from Abcam or one of our authorized distributors