




Product datasheet

Anti-PTF1A antibody ab245889

★★★★★ [1 Abreviews](#) [5 Images](#)

Overview

Product name	Anti-PTF1A antibody
Description	Goat polyclonal to PTF1A
Host species	Goat
Tested applications	Suitable for: IHC-Fr
Species reactivity	Reacts with: Mouse Predicted to work with: Rat 
Immunogen	Recombinant fragment within Mouse PTF1A aa 1-250. The exact immunogen sequence used to generate this antibody is proprietary information. If additional detail on the immunogen is needed to determine the suitability of the antibody for your needs, please contact our Scientific Support team to discuss your requirements. GST fusion protein expressed in E.coli. Database link: Q9QX98  Run BLAST with  Run BLAST with
Positive control	IHC-Fr: WT P30 mouse pancreas, WT E15.5 mouse pancreas, WT E11.5 mouse spinal cord, WT P7 mouse cerebellum and WT E17.5 mouse retina tissue.
General notes	<p>The Life Science industry has been in the grips of a reproducibility crisis for a number of years. Abcam is leading the way in addressing this with our range of recombinant monoclonal antibodies and knockout edited cell lines for gold-standard validation. Please check that this product meets your needs before purchasing.</p> <p>If you have any questions, special requirements or concerns, please send us an inquiry and/or contact our Support team ahead of purchase. Recommended alternatives for this product can be found below, along with publications, customer reviews and Q&As</p>

Properties

Form	Liquid
Storage instructions	Shipped at 4°C. Store at +4°C short term (1-2 weeks). Upon delivery aliquot. Store at -20°C long term. Avoid freeze / thaw cycle.
Storage buffer	Raw Antiserum
Purity	Whole antiserum
Clonality	Polyclonal
Isotype	IgG

Applications

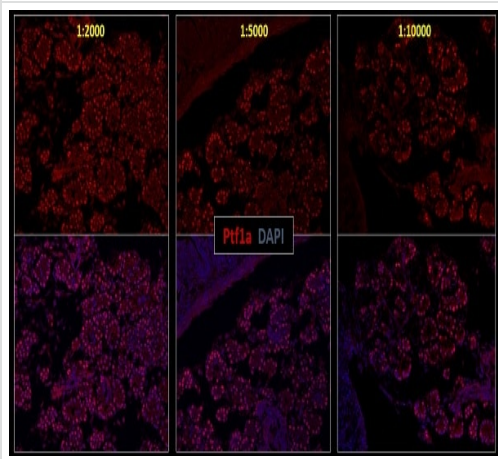
The Abpromise guarantee Our **Abpromise guarantee** covers the use of ab245889 in the following tested applications. The application notes include recommended starting dilutions; optimal dilutions/concentrations should be determined by the end user.

Application	Abreviews	Notes
IHC-Fr		1/200 - 1/10000.

Target

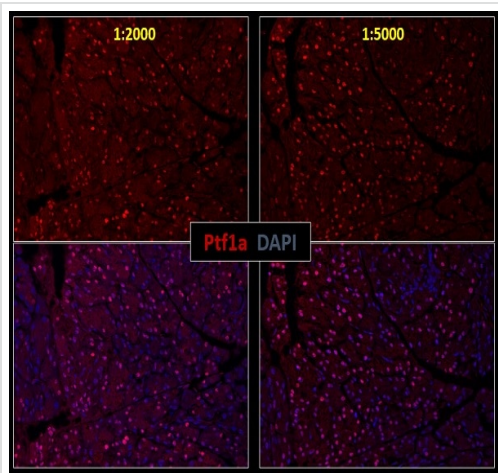
Function	Transcriptional activator. Binds to the E-box consensus sequence 5'-CANNTG-3'. Plays an important role in determining whether cells allocated to the pancreatic buds continue towards pancreatic organogenesis or revert back to duodenal fates. May be involved in the maintenance of exocrine pancreas-specific gene expression including ELA1 and amylase. Required for the formation of pancreatic acinar and ductal cells (By similarity). Plays an important role in cerebellar development.
Tissue specificity	Pancreas-specific (at protein level). Loss of expression is seen in ductal type pancreas cancers.
Involvement in disease	Defects in PTF1A are the cause of diabetes mellitus and cerebellar hypoplasia/agenesis (DMCH) [MIM:609069].
Sequence similarities	Contains 1 basic helix-loop-helix (bHLH) domain.
Cellular localization	Nucleus. Cytoplasm. In chronic pancreatitis associated with pancreas cancer preferentially accumulates in the cytoplasm of acinar/ductular complexes. In the cytoplasm loses its ability to form the PTF1 complex.
Form	PTF1A is a pancreas specific transcription factor. Mammalian studies have implicated important roles for the basic helix-loop-helix transcription factor PTF1A-p48 in the development of both exocrine and endocrine pancreas.

Images



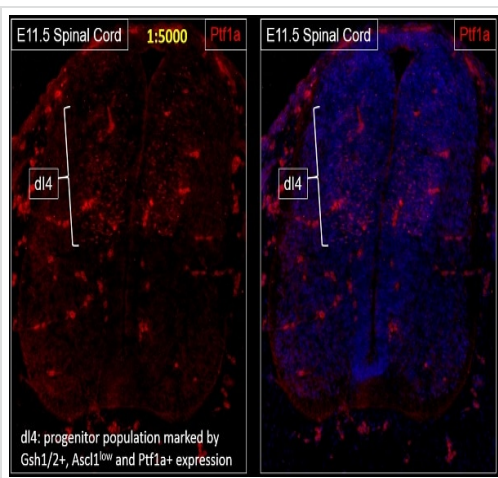
Immunohistochemistry (Frozen sections) - Anti-PTF1A antibody (ab245889)

Immunohistochemical analysis of cryosections of WT E15.5 mouse pancreas tissue stained for PTF1A (Red) using ab245889 at various dilutions as shown (1/2000, Left; 1/5000, Middle; 1/10000, Right). Counterstained with DAPI (Blue). Without antigen retrieval.



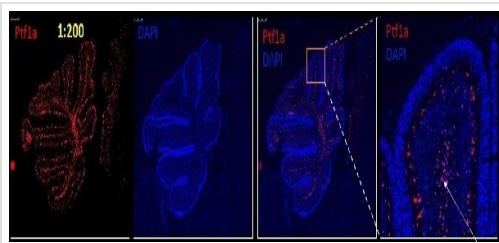
Immunohistochemistry (Frozen sections) - Anti-PTF1A antibody (ab245889)

Immunohistochemical analysis of cryosections of WT E15.5 mouse pancreas tissue stained for PTF1A (Red) using ab245889 at various dilutions as shown (1/2000, Left; 1/5000, Right). Counterstained with DAPI (Blue). Without antigen retrieval.



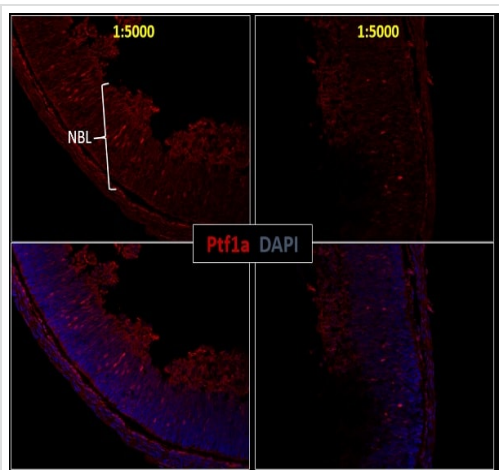
Immunohistochemistry (Frozen sections) - Anti-PTF1A antibody (ab245889)

Immunohistochemical analysis of cryosections of WT E11.5 mouse spinal cord tissue stained for PTF1A (Red) using ab245889 at 1/5000 dilution. Counterstained with DAPI (Blue). Without antigen retrieval.



Immunohistochemistry (Frozen sections) - Anti-PTF1A antibody (ab245889)

Immunohistochemical analysis of cryosections of WT P7 mouse cerebellum tissue stained for PTF1A (Red) using ab245889 at 1/200 dilution. Counterstained with DAPI (Blue). White arrow indicates white matter. Without antigen retrieval.



Immunohistochemistry (Frozen sections) - Anti-PTF1A antibody (ab245889)

Immunohistochemical analysis of cryosections of WT E17.5 mouse retina tissue stained for PTF1A (Red) using ab245889 at 1/5000 dilution. Counterstained with DAPI (Blue).

In developing mouse retina, Ptf1a expression is found within the neuroblastic layer (NBL) and is expressed within amacrine and horizontal cells.

Please note: All products are "FOR RESEARCH USE ONLY. NOT FOR USE IN DIAGNOSTIC PROCEDURES"

Our Abpromise to you: Quality guaranteed and expert technical support

- Replacement or refund for products not performing as stated on the datasheet
- Valid for 12 months from date of delivery
- Response to your inquiry within 24 hours
- We provide support in Chinese, English, French, German, Japanese and Spanish
- Extensive multi-media technical resources to help you
- We investigate all quality concerns to ensure our products perform to the highest standards

If the product does not perform as described on this datasheet, we will offer a refund or replacement. For full details of the Abpromise, please visit <https://www.abcam.com/abpromise> or contact our technical team.

Terms and conditions

- Guarantee only valid for products bought direct from Abcam or one of our authorized distributors