

Product datasheet

Anti-PTGES2/Gbf1 antibody [EPR25169-3] ab300052

Recombinant RabMAb

[7 Images](#)

Overview

Product name	Anti-PTGES2/Gbf1 antibody [EPR25169-3]
Description	Rabbit monoclonal [EPR25169-3] to PTGES2/Gbf1
Host species	Rabbit
Tested applications	Suitable for: IHC-P, WB Unsuitable for: Flow Cyt (Intra), ICC/IF or IP
Species reactivity	Reacts with: Mouse, Rat, Human
Immunogen	Recombinant fragment. This information is proprietary to Abcam and/or its suppliers.
Positive control	WB: Human heart, Human kidney, Mouse heart, Mouse kidney, Mouse thymus, Rat heart and Rat lung lysates. IHC-P: Human kidney, Human colon carcinoma, Mouse cardiac muscle and Rat cardiac muscle tissues.
General notes	<p>This product is a recombinant monoclonal antibody, which offers several advantages including:</p> <ul style="list-style-type: none">- High batch-to-batch consistency and reproducibility- Improved sensitivity and specificity- Long-term security of supply- Animal-free production <p>For more information see here.</p> <p>Our RabMAb[®] technology is a patented hybridoma-based technology for making rabbit monoclonal antibodies. For details on our patents, please refer to RabMAb[®] patents.</p>

Properties

Form	Liquid
Storage instructions	Shipped at 4°C. Store at +4°C short term (1-2 weeks). Upon delivery aliquot. Store at -20°C long term. Avoid freeze / thaw cycle.
Storage buffer	pH: 7.20 Preservative: 0.01% Sodium azide Constituents: 59% PBS, 40% Glycerol (glycerin, glycerine), 0.05% BSA
Purity	Protein A purified
Clonality	Monoclonal
Clone number	EPR25169-3

Isotype

IgG

Applications

The Abpromise guarantee

Our **Abpromise guarantee** covers the use of ab300052 in the following tested applications.

The application notes include recommended starting dilutions; optimal dilutions/concentrations should be determined by the end user.

Application	Abreviews	Notes
IHC-P		1/100. Perform heat mediated antigen retrieval with Tris/EDTA buffer pH 9.0 before commencing with IHC staining protocol.
WB		1/1000. Detects a band of approximately 30, 30, 45 kDa (predicted molecular weight: 42 kDa).

Application notes

Is unsuitable for Flow Cyt (Intra), ICC/IF or IP.

Target

Function

Isomerase that catalyzes the conversion of unstable intermediate of prostaglandin E2 H2 (PGH2) into the more stable prostaglandin E2 (PGE2) form. May also have transactivation activity toward IFN-gamma (IFNG), possibly via an interaction with CEBPB; however, the relevance of transcription activation activity remains unclear.

Tissue specificity

Widely expressed. Expressed in the heart, including apex, inter-ventricular septum, both atria and ventricles, but not in the aorta. Also expressed in fetal heart. Detected in various regions of the brain: cerebellum; occipital, frontal and parietal lobes. Also expressed in the lymph nodes, skeletal muscle, kidney and trachea, but not in the thymus or lung. Overexpressed in colorectal cancer.

Pathway

Lipid metabolism; prostaglandin biosynthesis.

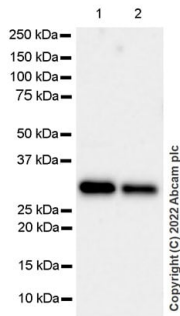
Sequence similarities

Belongs to the GST superfamily.
Contains 1 glutaredoxin domain.
Contains 1 GST C-terminal domain.

Cellular localization

Golgi apparatus membrane and Cytoplasm > perinuclear region. Synthesized as a Golgi membrane-bound protein, which is further cleaved into the predominant soluble truncated form. The truncated form is cytoplasmic and is enriched in the perinuclear region.

Images



Western blot - Anti-PTGES2/Gbf1 antibody [EPR25169-3] (AB300052)

All lanes :

Lane 1 : Human heart tissue lysate

Lane 2 : Human kidney tissue lysate

Lysates/proteins at 20 µg per lane.

Secondary

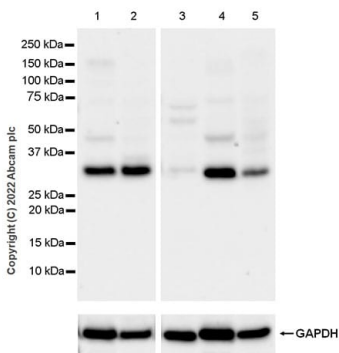
All lanes : VeriBlot for IP Detection Reagent (HRP) ([ab131366](#)) at 1/1000 dilution

Predicted band size: 42 kDa

Observed band size: 30 kDa

Exposure time: 48 seconds

Blocking, diluting buffer and concentration was 5% NFDm/TBST.



Western blot - Anti-PTGES2/Gbf1 antibody [EPR25169-3] (AB300052)

All lanes : Anti-PTGES2/Gbf1 antibody [EPR25169-3] (ab300052) at 1/1000 dilution

Lane 1 : Mouse heart tissue lysate

Lane 2 : Mouse kidney tissue lysate

Lane 3 : Mouse thymus tissue lysate

Lane 4 : Rat heart tissue lysate

Lane 5 : Rat lung tissue lysate

Lysates/proteins at 1/20 dilution per lane.

Secondary

All lanes : Goat Anti-Rabbit IgG H&L (HRP) ([ab97051](#)) at 1/20000 dilution

Predicted band size: 42 kDa

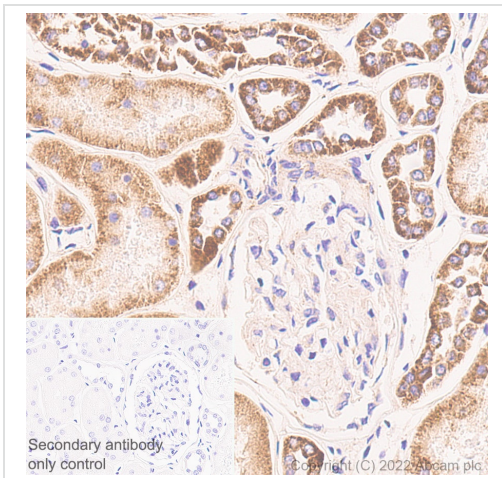
Observed band size: 30, 45 kDa

Exposure time: 26 seconds

Blocking, diluting buffer and concentration was 5% NFDm/TBST.

The expression profile/molecular weight observed is consistent with that described in the literature (PMID: 12835322).

Low expression: mouse thymus, rat lung (PMID: 15744024, 11866447).

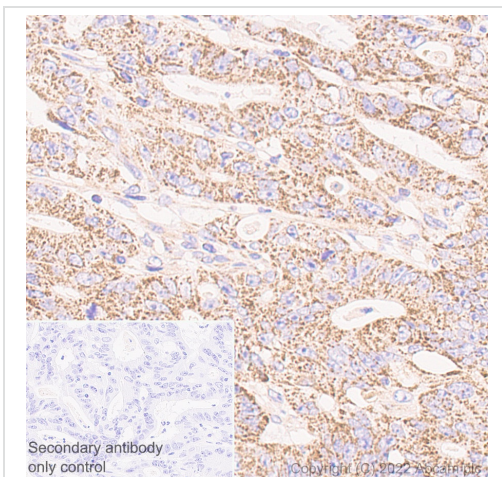


Immunohistochemistry (Formalin/PFA-fixed paraffin-embedded sections) - Anti-PTGES2/Gbf1 antibody [EPR25169-3] (AB300052)

Immunohistochemical analysis of paraffin-embedded Human kidney tissue labelling PTGES2/Gbf1 with ab300052 at 1/500 (0.944 $\mu\text{g/ml}$) followed by a ready to use LeicaDS9800 (BOND™ Polymer Refine Detection). Positive staining on human renal tubules. The section was incubated with ab300052 for 30 mins at room temperature. The immunostaining was performed on a Leica Biosystems BOND® RX instrument. Counterstained with Hematoxylin.

Secondary antibody only control: Secondary antibody is a ready to use LeicaDS9800 (BOND™ Polymer Refine Detection).

Heat mediated antigen retrieval with Tris-EDTA buffer (pH 9.0, epitope retrieval solution2) for 20 mins.

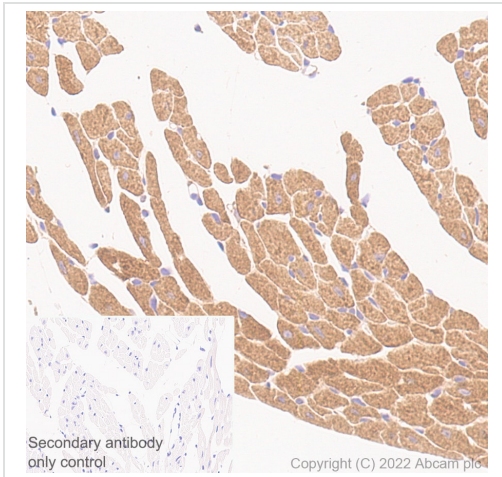


Immunohistochemistry (Formalin/PFA-fixed paraffin-embedded sections) - Anti-PTGES2/Gbf1 antibody [EPR25169-3] (AB300052)

Immunohistochemical analysis of paraffin-embedded Human colon carcinoma tissue labelling PTGES2/Gbf1 with ab300052 at 1/500 (0.944 $\mu\text{g/ml}$) followed by a ready to use LeicaDS9800 (BOND™ Polymer Refine Detection). Positive staining on human colon carcinoma. The section was incubated with ab300052 for 30 mins at room temperature. The immunostaining was performed on a Leica Biosystems BOND® RX instrument. Counterstained with Hematoxylin.

Secondary antibody only control: Secondary antibody is a ready to use LeicaDS9800 (BOND™ Polymer Refine Detection).

Heat mediated antigen retrieval with Tris-EDTA buffer (pH 9.0, epitope retrieval solution2) for 20 mins.

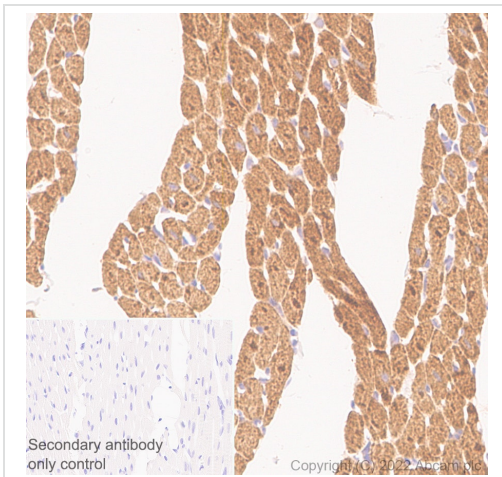


Immunohistochemistry (Formalin/PFA-fixed paraffin-embedded sections) - Anti-PTGES2/Gbf1 antibody [EPR25169-3] (AB300052)

Immunohistochemical analysis of paraffin-embedded Mouse cardiac muscle tissue labelling PTGES2/Gbf1 with ab300052 at 1/100 (4.72 µg/ml) followed by a ready to use LeicaDS9800 (BOND™ Polymer Refine Detection). Positive staining on mouse cardiac muscle. The section was incubated with ab300052 for 30 mins at room temperature. The immunostaining was performed on a Leica Biosystems BOND® RX instrument. Counterstained with Hematoxylin.

Secondary antibody only control: Secondary antibody is a ready to use LeicaDS9800 (BOND™ Polymer Refine Detection).

Heat mediated antigen retrieval with Tris-EDTA buffer (pH 9.0, epitope retrieval solution2) for 20 mins.



Immunohistochemistry (Formalin/PFA-fixed paraffin-embedded sections) - Anti-PTGES2/Gbf1 antibody [EPR25169-3] (AB300052)

Immunohistochemical analysis of paraffin-embedded Rat cardiac muscle tissue labelling PTGES2/Gbf1 with ab300052 at 1/100 (4.72 µg/ml) followed by a ready to use LeicaDS9800 (BOND™ Polymer Refine Detection). Positive staining on rat cardiac muscle. The section was incubated with ab300052 for 30 mins at room temperature. The immunostaining was performed on a Leica Biosystems BOND® RX instrument. Counterstained with Hematoxylin.

Secondary antibody only control: Secondary antibody is a ready to use LeicaDS9800 (BOND™ Polymer Refine Detection).

Heat mediated antigen retrieval with Tris-EDTA buffer (pH 9.0, epitope retrieval solution2) for 20 mins.

Why choose a recombinant antibody?



Research with confidence
Consistent and reproducible results



Long-term and scalable supply
Recombinant technology



Success from the first experiment
Confirmed specificity



Ethical standards compliant
Animal-free production

Anti-PTGES2/Gbf1 antibody [EPR25169-3]
(AB300052)

Please note: All products are "FOR RESEARCH USE ONLY. NOT FOR USE IN DIAGNOSTIC PROCEDURES"

Our Abpromise to you: Quality guaranteed and expert technical support

- Replacement or refund for products not performing as stated on the datasheet
- Valid for 12 months from date of delivery
- Response to your inquiry within 24 hours
- We provide support in Chinese, English, French, German, Japanese and Spanish
- Extensive multi-media technical resources to help you
- We investigate all quality concerns to ensure our products perform to the highest standards

If the product does not perform as described on this datasheet, we will offer a refund or replacement. For full details of the Abpromise, please visit <https://www.abcam.com/abpromise> or contact our technical team.

Terms and conditions

- Guarantee only valid for products bought direct from Abcam or one of our authorized distributors