

# Anti-PTGES2/Gbf1 antibody [EPR25169-3] (BSA and Azide free) ab300053

Recombinant RabMAb

[7 Images](#)

### Overview

<b>Product name</b>	Anti-PTGES2/Gbf1 antibody [EPR25169-3] (BSA and Azide free)
<b>Description</b>	Rabbit monoclonal [EPR25169-3] to PTGES2/Gbf1
<b>Host species</b>	Rabbit
<b>Tested applications</b>	<b>Suitable for:</b> IHC-P, WB <b>Unsuitable for:</b> Flow Cyt (Intra), ICC/IF or IP
<b>Species reactivity</b>	<b>Reacts with:</b> Mouse, Rat, Human
<b>Immunogen</b>	Recombinant fragment. This information is proprietary to Abcam and/or its suppliers.
<b>Positive control</b>	WB: Human heart, Human kidney, Mouse heart, Mouse kidney and thymus, Rat heart and Rat lung lysates. IHC-P: Human kidney, Human colon carcinoma, Mouse cardiac muscle and Rat cardiac muscle tissues.
<b>General notes</b>	ab300053 is a carrier free version of <a href="#">ab300052</a> .

Our **carrier-free** antibodies are typically supplied in a PBS-only formulation, purified and free of BSA, sodium azide and glycerol. The carrier-free buffer and high concentration allow for increased conjugation efficiency.

This conjugation-ready format is designed for use with fluorochromes, metal isotopes, oligonucleotides, and enzymes, which makes them ideal for antibody labelling, functional and cell-based assays, flow-based assays (e.g. mass cytometry) and Multiplex Imaging applications.

Use our **conjugation kits** for antibody conjugates that are ready-to-use in as little as 20 minutes with <1 minute hands-on-time and 100% antibody recovery: available for fluorescent dyes, HRP, biotin and gold.

This product is compatible with the Maxpar<sup>®</sup> Antibody Labeling Kit from Fluidigm, without the need for antibody preparation. Maxpar<sup>®</sup> is a trademark of Fluidigm Canada Inc.

This product is a recombinant monoclonal antibody, which offers several advantages including:

- High batch-to-batch consistency and reproducibility
- Improved sensitivity and specificity
- Long-term security of supply
- Animal-free production

For more information [see here](#).

Our RabMAb<sup>®</sup> technology is a patented hybridoma-based technology for making rabbit

monoclonal antibodies. For details on our patents, please refer to [RabMAb® patents](#).

## Properties

<b>Form</b>	Liquid
<b>Storage instructions</b>	Shipped at 4°C. Store at +4°C.
<b>Storage buffer</b>	pH: 7.2 Constituent: 100% PBS
<b>Carrier free</b>	Yes
<b>Purity</b>	Protein A purified
<b>Clonality</b>	Monoclonal
<b>Clone number</b>	EPR25169-3
<b>Isotype</b>	IgG

## Applications

**The Abpromise guarantee** Our **Abpromise guarantee** covers the use of ab300053 in the following tested applications.

The application notes include recommended starting dilutions; optimal dilutions/concentrations should be determined by the end user.

Application	Abreviews	Notes
IHC-P		Use at an assay dependent concentration. Perform heat mediated antigen retrieval with Tris/EDTA buffer pH 9.0 before commencing with IHC staining protocol.
WB		Use at an assay dependent concentration. Detects a band of approximately 30, 30, 45 kDa (predicted molecular weight: 42 kDa).

**Application notes** Is unsuitable for Flow Cyt (Intra), ICC/IF or IP.

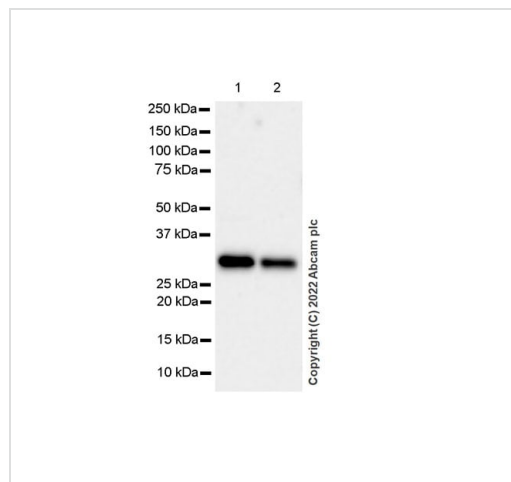
## Target

<b>Function</b>	Isomerase that catalyzes the conversion of unstable intermediate of prostaglandin E2 H2 (PGH2) into the more stable prostaglandin E2 (PGE2) form. May also have transactivation activity toward IFN-gamma (IFNG), possibly via an interaction with CEBPB; however, the relevance of transcription activation activity remains unclear.
<b>Tissue specificity</b>	Widely expressed. Expressed in the heart, including apex, inter-ventricular septum, both atria and ventricles, but not in the aorta. Also expressed in fetal heart. Detected in various regions of the brain: cerebellum; occipital, frontal and parietal lobes. Also expressed in the lymph nodes, skeletal muscle, kidney and trachea, but not in the thymus or lung. Overexpressed in colorectal cancer.
<b>Pathway</b>	Lipid metabolism; prostaglandin biosynthesis.
<b>Sequence similarities</b>	Belongs to the GST superfamily. Contains 1 glutaredoxin domain. Contains 1 GST C-terminal domain.

## Cellular localization

Golgi apparatus membrane and Cytoplasm > perinuclear region. Synthesized as a Golgi membrane-bound protein, which is further cleaved into the predominant soluble truncated form. The truncated form is cytoplasmic and is enriched in the perinuclear region.

## Images



Western blot - Anti-PTGES2/Gbf1 antibody [EPR25169-3] (BSA and Azide free) (AB300053)

**All lanes :** Anti-PTGES2/Gbf1 antibody [EPR25169-3] ([ab300052](#)) at 1/1000 dilution

**Lane 1 :** Human heart tissue lysate

**Lane 2 :** Human kidney tissue lysate

Lysates/proteins at 20 µg per lane.

### Secondary

**All lanes :** VeriBlot for IP Detection Reagent (HRP) ([ab131366](#)) at 1/1000 dilution

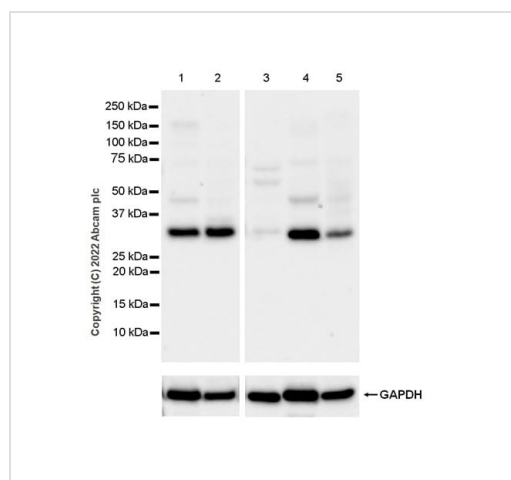
**Predicted band size:** 42 kDa

**Observed band size:** 30 kDa

**Exposure time:** 48 seconds

This data was developed using [ab300052](#), the same antibody clone in a different buffer formulation.

Blocking, diluting buffer and concentration was 5% NFDm/TBST.



Western blot - Anti-PTGES2/Gbf1 antibody [EPR25169-3] (BSA and Azide free) (AB300053)

**All lanes :** Anti-PTGES2/Gbf1 antibody [EPR25169-3] ([ab300052](#)) at 1/1000 dilution

**Lane 1 :** Mouse heart tissue lysate

**Lane 2 :** Mouse kidney tissue lysate

**Lane 3 :** Mouse thymus tissue lysate

**Lane 4 :** Rat heart tissue lysate

**Lane 5 :** Rat lung tissue lysate

Lysates/proteins at 1/20 dilution per lane.

### Secondary

**All lanes :** Goat Anti-Rabbit IgG H&L (HRP) ([ab97051](#)) at 1/20000 dilution

**Predicted band size:** 42 kDa

**Observed band size:** 30, 45 kDa

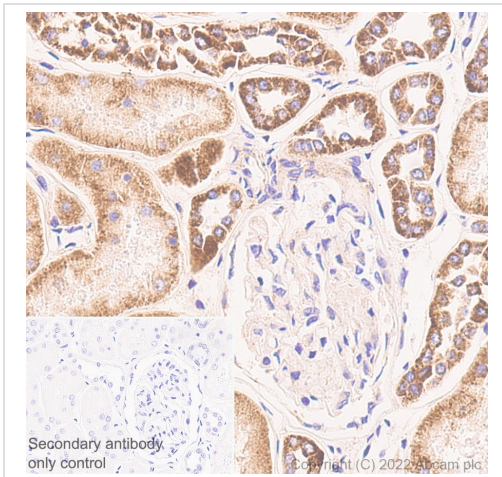
**Exposure time:** 26 seconds

This data was developed using [ab300052](#), the same antibody clone in a different buffer formulation.

Blocking, diluting buffer and concentration was 5% NFD/MTBST.

The expression profile/molecular weight observed is consistent with that described in the literature (PMID: 12835322).

Low expression: mouse thymus, rat lung (PMID: 15744024, 11866447).



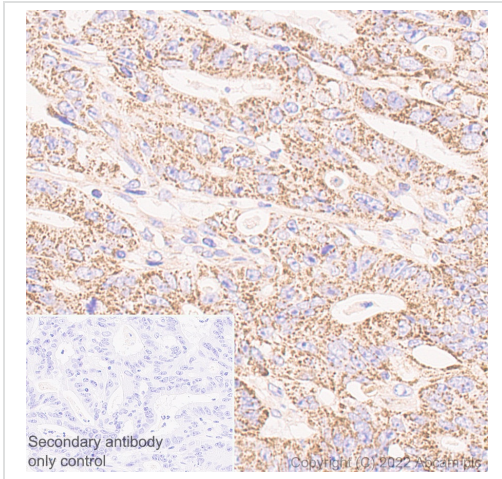
Immunohistochemistry (Formalin/PFA-fixed paraffin-embedded sections) - Anti-PTGES2/Gbf1 antibody [EPR25169-3] (BSA and Azide free) (AB300053)

This data was developed using [ab300052](#), the same antibody clone in a different buffer formulation.

Immunohistochemical analysis of paraffin-embedded Human kidney tissue labelling PTGES2/Gbf1 with [ab300052](#) at 1/500 (0.944 µg/ml) followed by a ready to use LeicaDS9800 (BOND™ Polymer Refine Detection). Positive staining on human renal tubules. The section was incubated with [ab300052](#) for 30 mins at room temperature. The immunostaining was performed on a Leica Biosystems BOND® RX instrument. Counterstained with Hematoxylin.

Secondary antibody only control: Secondary antibody is a ready to use LeicaDS9800 (BOND™ Polymer Refine Detection).

Heat mediated antigen retrieval with Tris-EDTA buffer (pH 9.0, epitope retrieval solution2) for 20 mins.



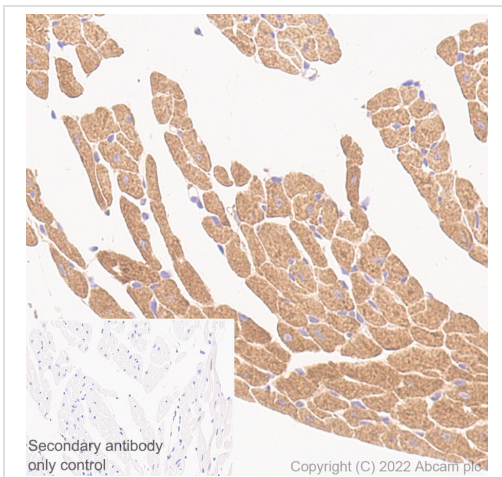
Immunohistochemistry (Formalin/PFA-fixed paraffin-embedded sections) - Anti-PTGES2/Gbf1 antibody [EPR25169-3] (BSA and Azide free) (AB300053)

This data was developed using [ab300052](#), the same antibody clone in a different buffer formulation.

Immunohistochemical analysis of paraffin-embedded Human colon carcinoma tissue labelling PTGES2/Gbf1 with [ab300052](#) at 1/500 (0.944 µ/ml) followed by a ready to use LeicaDS9800 (BOND™ Polymer Refine Detection). Positive staining on human colon carcinoma. The section was incubated with [ab300052](#) for 30 mins at room temperature. The immunostaining was performed on a Leica Biosystems BOND® RX instrument. Counterstained with Hematoxylin.

Secondary antibody only control: Secondary antibody is a ready to use LeicaDS9800 (BOND™ Polymer Refine Detection).

Heat mediated antigen retrieval with Tris-EDTA buffer (pH 9.0, epitope retrieval solution2) for 20 mins.



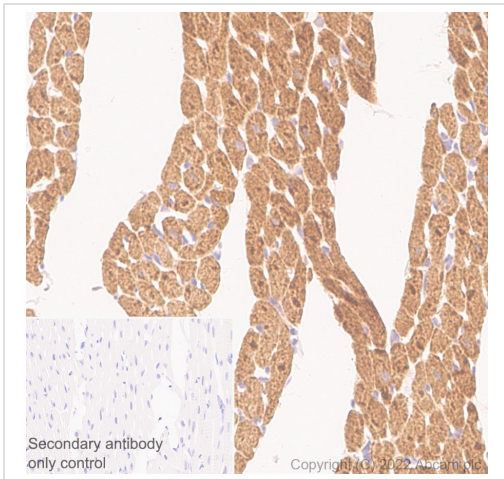
Immunohistochemistry (Formalin/PFA-fixed paraffin-embedded sections) - Anti-PTGES2/Gbf1 antibody [EPR25169-3] (BSA and Azide free) (AB300053)

This data was developed using [ab300052](#), the same antibody clone in a different buffer formulation.

Immunohistochemical analysis of paraffin-embedded Mouse cardiac muscle tissue labelling PTGES2/Gbf1 with [ab300052](#) at 1/100 (4.72 µg/ml) followed by a ready to use LeicaDS9800 (BOND™ Polymer Refine Detection). Positive staining on mouse cardiac muscle. The section was incubated with [ab300052](#) for 30 mins at room temperature. The immunostaining was performed on a Leica Biosystems BOND® RX instrument. Counterstained with Hematoxylin.

Secondary antibody only control: Secondary antibody is a ready to use LeicaDS9800 (BOND™ Polymer Refine Detection).

Heat mediated antigen retrieval with Tris-EDTA buffer (pH 9.0, epitope retrieval solution2) for 20 mins.



Immunohistochemistry (Formalin/PFA-fixed paraffin-embedded sections) - Anti-PTGES2/Gbf1 antibody [EPR25169-3] (BSA and Azide free) (AB300053)

This data was developed using **ab300052**, the same antibody clone in a different buffer formulation.

Immunohistochemical analysis of paraffin-embedded Rat cardiac muscle tissue labelling PTGES2/Gbf1 with **ab300052** at 1/100 (4.72 µg/ml) followed by a ready to use LeicaDS9800 (BOND™ Polymer Refine Detection). Positive staining on rat cardiac muscle. The section was incubated with **ab300052** for 30 mins at room temperature. The immunostaining was performed on a Leica Biosystems BOND® RX instrument. Counterstained with Hematoxylin.

Secondary antibody only control: Secondary antibody is a ready to use LeicaDS9800 (BOND™ Polymer Refine Detection).

Heat mediated antigen retrieval with Tris-EDTA buffer (pH 9.0, epitope retrieval solution2) for 20 mins.

Why choose a recombinant antibody?

 <p><b>Research with confidence</b> Consistent and reproducible results</p>	 <p><b>Long-term and scalable supply</b> Recombinant technology</p>
 <p><b>Success from the first experiment</b> Confirmed specificity</p>	 <p><b>Ethical standards compliant</b> Animal-free production</p>

Anti-PTGES2/Gbf1 antibody [EPR25169-3] (BSA and Azide free) (AB300053)

**Please note:** All products are "FOR RESEARCH USE ONLY. NOT FOR USE IN DIAGNOSTIC PROCEDURES"

### Our Abpromise to you: Quality guaranteed and expert technical support

- Replacement or refund for products not performing as stated on the datasheet
- Valid for 12 months from date of delivery
- Response to your inquiry within 24 hours
- We provide support in Chinese, English, French, German, Japanese and Spanish
- Extensive multi-media technical resources to help you
- We investigate all quality concerns to ensure our products perform to the highest standards

If the product does not perform as described on this datasheet, we will offer a refund or replacement. For full details of the Abpromise, please visit <https://www.abcam.com/abpromise> or contact our technical team.

## Terms and conditions

---

- Guarantee only valid for products bought direct from Abcam or one of our authorized distributors