


## Product datasheet

### Anti-PTP1B (phospho S50) antibody ab88472

★★★★★ [1 Abreviews](#) [1 References](#) [1 Image](#)

#### Overview

<b>Product name</b>	Anti-PTP1B (phospho S50) antibody
<b>Description</b>	Rabbit polyclonal to PTP1B (phospho S50)
<b>Host species</b>	Rabbit
<b>Specificity</b>	ab88472 reactivity is observed as a weak singlet in control (untreated) cells and is not observed after lambda phosphatase treatment.
<b>Tested applications</b>	<b>Suitable for:</b> WB
<b>Species reactivity</b>	<b>Reacts with:</b> Human <b>Predicted to work with:</b> Rat 
<b>Immunogen</b>	Synthetic peptide corresponding to Human PTP1B (phospho S50).
<b>General notes</b>	<p>The Life Science industry has been in the grips of a reproducibility crisis for a number of years. Abcam is leading the way in addressing this with our range of recombinant monoclonal antibodies and knockout edited cell lines for gold-standard validation. Please check that this product meets your needs before purchasing.</p> <p>If you have any questions, special requirements or concerns, please send us an inquiry and/or contact our Support team ahead of purchase. Recommended alternatives for this product can be found below, along with publications, customer reviews and Q&amp;As</p>

#### Properties

<b>Form</b>	Liquid
<b>Storage instructions</b>	Shipped at 4°C. Store at -20°C. Stable for 12 months at -20°C.
<b>Storage buffer</b>	Preservative: 0.05% Sodium azide Constituents: 0.1% BSA, 50% Glycerol, PBS
<b>Purity</b>	Immunogen affinity purified
<b>Clonality</b>	Polyclonal
<b>Isotype</b>	IgG

#### Applications

The **Abpromise guarantee** Our **Abpromise guarantee** covers the use of ab88472 in the following tested applications.

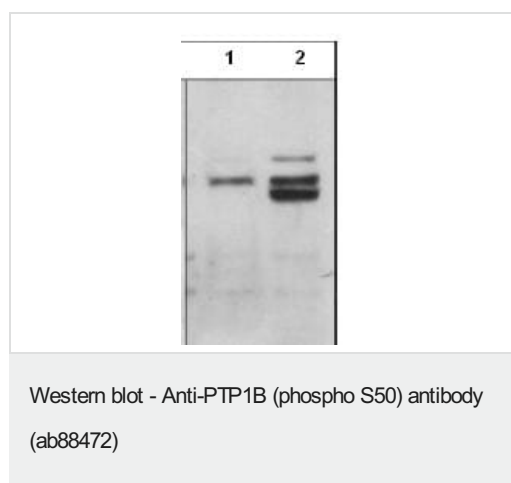
The application notes include recommended starting dilutions; optimal dilutions/concentrations should be determined by the end user.

Application	Abreviews	Notes
WB	★★★★★ (1)	1/1000. Detects a band of approximately 50 kDa (predicted molecular weight: 50 kDa).

## Target

<b>Function</b>	May play an important role in CKII- and p60c-src-induced signal transduction cascades.
<b>Sequence similarities</b>	Belongs to the protein-tyrosine phosphatase family. Non-receptor class 1 subfamily. Contains 1 tyrosine-protein phosphatase domain.
<b>Post-translational modifications</b>	Oxidized on Cys-215; the Cys-SOH formed in response to redox signaling reacts with the alpha-amido of the following residue to form a 4-amino-3-isothiazolidinone serine cross-link, triggering a conformational change that inhibits substrate binding and activity. The active site can be restored by reduction.
<b>Cellular localization</b>	Endoplasmic reticulum membrane.

## Images



**All lanes :** Anti-PTP1B (phospho S50) antibody (ab88472) at 1/1000 dilution

**Lane 1 :** lysate from untreated Jurkat cells

**Lane 2 :** lysate from Jurkat cells treated with calyculin A (100 nM for 30 minutes)

**Predicted band size:** 50 kDa

**Observed band size:** 50 kDa

**Please note:** All products are "FOR RESEARCH USE ONLY. NOT FOR USE IN DIAGNOSTIC PROCEDURES"

## Our Abpromise to you: Quality guaranteed and expert technical support

- Replacement or refund for products not performing as stated on the datasheet
- Valid for 12 months from date of delivery
- Response to your inquiry within 24 hours
- We provide support in Chinese, English, French, German, Japanese and Spanish
- Extensive multi-media technical resources to help you
- We investigate all quality concerns to ensure our products perform to the highest standards

If the product does not perform as described on this datasheet, we will offer a refund or replacement. For full details of the Abpromise, please visit <https://www.abcam.com/abpromise> or contact our technical team.

#### **Terms and conditions**

---

- Guarantee only valid for products bought direct from Abcam or one of our authorized distributors