

Product datasheet

Anti-PTPN14 antibody ab204321

[3 References](#) [1 Image](#)

Overview

Product name	Anti-PTPN14 antibody
Description	Rabbit polyclonal to PTPN14
Host species	Rabbit
Tested applications	Suitable for: WB
Species reactivity	Reacts with: Human
Immunogen	Recombinant fragment corresponding to Human PTPN14 aa 700-800. Database link: Q15678 Run BLAST with Run BLAST with
Positive control	WB: U-251 MG, MCF7 cells.
General notes	<p>The Life Science industry has been in the grips of a reproducibility crisis for a number of years. Abcam is leading the way in addressing this with our range of recombinant monoclonal antibodies and knockout edited cell lines for gold-standard validation. Please check that this product meets your needs before purchasing.</p> <p>If you have any questions, special requirements or concerns, please send us an inquiry and/or contact our Support team ahead of purchase. Recommended alternatives for this product can be found below, along with publications, customer reviews and Q&As</p>

Properties

Form	Liquid
Storage instructions	Shipped at 4°C. Store at +4°C short term (1-2 weeks). Upon delivery aliquot. Store at -20°C long term. Avoid freeze / thaw cycle.
Storage buffer	pH: 7.20 Preservative: 0.02% Sodium azide Constituents: 40% Glycerol (glycerin, glycerine), 59% PBS
Purity	Immunogen affinity purified
Clonality	Polyclonal
Isotype	IgG

Applications

The Abpromise guarantee

Our **Abpromise guarantee** covers the use of ab204321 in the following tested applications.

The application notes include recommended starting dilutions; optimal dilutions/concentrations should be determined by the end user.

Application	Abreviews	Notes
WB		Use a concentration of 0.04 - 0.4 µg/ml. Predicted molecular weight: 135 kDa.

Target

Function

Protein tyrosine phosphatase which may play a role in the regulation of lymphangiogenesis.

Tissue specificity

Expressed in a variety of human tissues including kidney, skeletal muscle, lung and placenta.

Involvement in disease

Defects in PTPN14 are a cause of choanal atresia and lymphedema (CHATLY) [MIM:613611]. A disease characterized by posterior choanal atresia and lymphedema. Additional features are a high-arched palate, hypoplastic nipples, and mild pectus excavatum. Note=A homozygous deletion in PTPN14 predicted to result in frameshift and premature truncation, has been shown to be the cause of choanal atresia and lymphedema in one family.

Sequence similarities

Belongs to the protein-tyrosine phosphatase family. Non-receptor class subfamily.
Contains 1 FERM domain.
Contains 1 tyrosine-protein phosphatase domain.

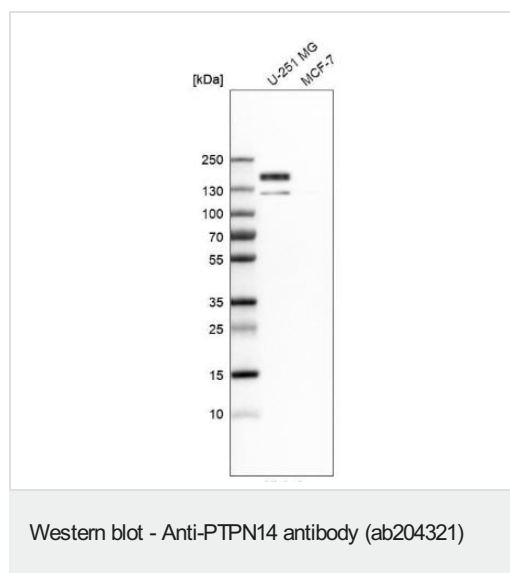
Post-translational modifications

Phosphorylated upon DNA damage, probably by ATM or ATR.

Cellular localization

Cytoplasm > cytoskeleton.

Images



Lanes 2-3 : Anti-PTPN14 antibody (ab204321) at 0.4 µg/ml

Lane 1 : Molecular weight ladder

Lane 2 : U-251 MG cell lysate

Lane 3 : MCF7 cell lysate

Predicted band size: 135 kDa

Please note: All products are "FOR RESEARCH USE ONLY. NOT FOR USE IN DIAGNOSTIC PROCEDURES"

Our Abpromise to you: Quality guaranteed and expert technical support

- Replacement or refund for products not performing as stated on the datasheet
- Valid for 12 months from date of delivery
- Response to your inquiry within 24 hours

- We provide support in Chinese, English, French, German, Japanese and Spanish
- Extensive multi-media technical resources to help you
- We investigate all quality concerns to ensure our products perform to the highest standards

If the product does not perform as described on this datasheet, we will offer a refund or replacement. For full details of the Abpromise, please visit <https://www.abcam.com/abpromise> or contact our technical team.

Terms and conditions

- Guarantee only valid for products bought direct from Abcam or one of our authorized distributors