

Product datasheet

Anti-PTPRD antibody [5H5D7] ab233806

[2 References](#) [3 Images](#)

Overview

Product name	Anti-PTPRD antibody [5H5D7]
Description	Mouse monoclonal [5H5D7] to PTPRD
Host species	Mouse
Tested applications	Suitable for: WB, Flow Cyt
Species reactivity	Reacts with: Human
Immunogen	Recombinant fragment corresponding to Human PTPRD aa 1077-1265 (extracellular). Expressed in E.Coli. Database link: P23468
Positive control	WB: Human PTPRD (AA: extra 1077-1265) recombinant protein; PTPRD (AA: extra 1077-1265)-hlgGfc transfected HEK-293 cell lysate. Flow: HL-60 cells.
General notes	<p>The Life Science industry has been in the grips of a reproducibility crisis for a number of years. Abcam is leading the way in addressing this with our range of recombinant monoclonal antibodies and knockout edited cell lines for gold-standard validation. Please check that this product meets your needs before purchasing.</p> <p>If you have any questions, special requirements or concerns, please send us an inquiry and/or contact our Support team ahead of purchase. Recommended alternatives for this product can be found below, along with publications, customer reviews and Q&As</p>

Properties

Form	Liquid
Storage instructions	Shipped at 4°C. Store at +4°C short term (1-2 weeks). Upon delivery aliquot. Store at -20°C long term. Avoid freeze / thaw cycle.
Storage buffer	Preservative: 0.05% Sodium azide Constituent: PBS
Purity	Protein G purified
Purification notes	Purified from tissue culture supernatant.
Clonality	Monoclonal
Clone number	5H5D7
Isotype	IgG1

Applications

The Abpromise guarantee

Our **Abpromise guarantee** covers the use of ab233806 in the following tested applications.

The application notes include recommended starting dilutions; optimal dilutions/concentrations should be determined by the end user.

Application	Abreviews	Notes
WB		1/500 - 1/2000.
Flow Cyt		1/200 - 1/400.

Target

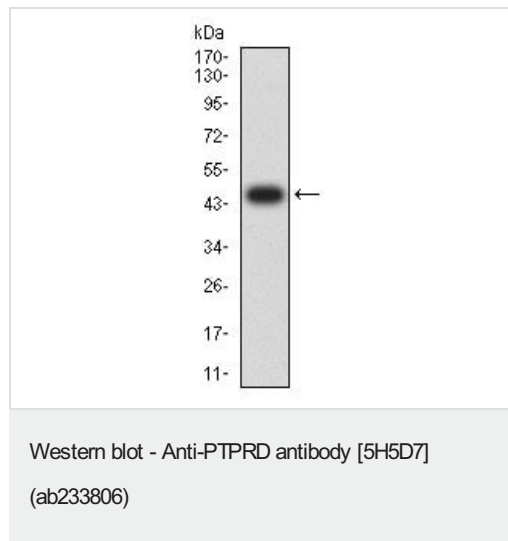
Relevance

PTPRD (protein tyrosine phosphatase receptor type D) is a protein tyrosine phosphatase that falls into the receptor-type group as it characteristically comprises an extracellular region, a single transmembrane region and two tandem cytoplasmic catalytic domains. The extracellular region of this protein contains 3 Ig-like and 8 fibronectin type III-like domains. This protein is thought to be involved in promoting neurite growth and in axonal guidance.

Cellular localization

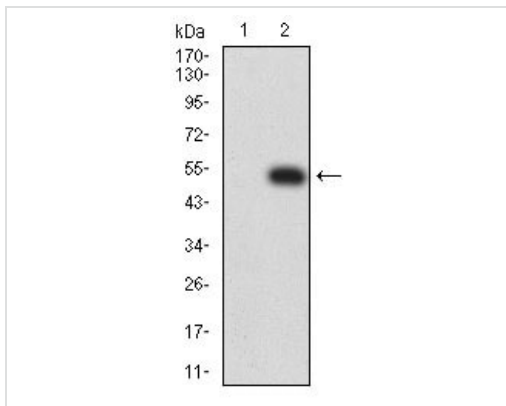
Cell Membrane

Images



Anti-PTPRD antibody [5H5D7] (ab233806) at 1/500 dilution +
Human PTPRD (AA: extra 1077-1265) recombinant protein.

Expected MW is 47.4 kDa.

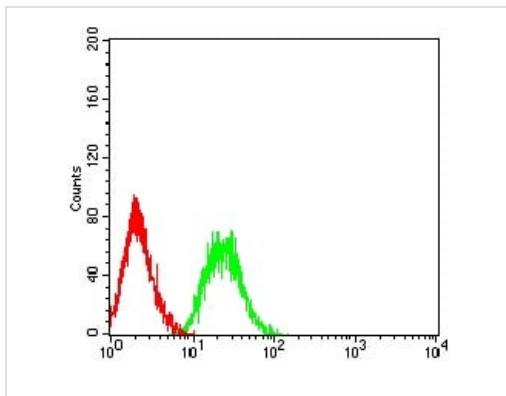


Western blot - Anti-PTPRD antibody [5H5D7]
(ab233806)

All lanes : Anti-PTPRD antibody [5H5D7] (ab233806) at 1/500 dilution

Lane 1 : HEK-293 (human epithelial cell line from embryonic kidney) cell lysate.

Lane 2 : PTPRD (AA: extra 1077-1265)-hlgGfC transfected HEK-293 cell lysate.



Flow Cytometry - Anti-PTPRD antibody [5H5D7]
(ab233806)

Flow cytometric analysis of HL-60 (human promyelocytic leukemia cell line) cells labeling PTPRD using ab233806 at 1/200 dilution (green) and a negative control (red).

Please note: All products are "FOR RESEARCH USE ONLY. NOT FOR USE IN DIAGNOSTIC PROCEDURES"

Our Abpromise to you: Quality guaranteed and expert technical support

- Replacement or refund for products not performing as stated on the datasheet
- Valid for 12 months from date of delivery
- Response to your inquiry within 24 hours
- We provide support in Chinese, English, French, German, Japanese and Spanish
- Extensive multi-media technical resources to help you
- We investigate all quality concerns to ensure our products perform to the highest standards

If the product does not perform as described on this datasheet, we will offer a refund or replacement. For full details of the Abpromise, please visit <https://www.abcam.com/abpromise> or contact our technical team.

Terms and conditions

- Guarantee only valid for products bought direct from Abcam or one of our authorized distributors