


## Product datasheet

### Anti-Pumilio 2 antibody ab10361

★ ★ ★ ★ ★ [1 Abreviews](#) [9 References](#) [2 Images](#)

#### Overview

<b>Product name</b>	Anti-Pumilio 2 antibody
<b>Description</b>	Rabbit polyclonal to Pumilio 2
<b>Host species</b>	Rabbit
<b>Tested applications</b>	<b>Suitable for:</b> WB, IP
<b>Species reactivity</b>	<b>Reacts with:</b> Mouse, Human <b>Predicted to work with:</b> Rabbit, Horse, Cow, Dog, Pig, Chimpanzee, Rhesus monkey, Gorilla, Orangutan, Elephant 
<b>Immunogen</b>	Synthetic peptide corresponding to Human Pumilio 2 aa 100-200. Database link: <a href="#">23369</a>
<b>General notes</b>	<p>The Life Science industry has been in the grips of a reproducibility crisis for a number of years. Abcam is leading the way in addressing this with our range of recombinant monoclonal antibodies and knockout edited cell lines for gold-standard validation. Please check that this product meets your needs before purchasing.</p> <p>If you have any questions, special requirements or concerns, please send us an inquiry and/or contact our Support team ahead of purchase. Recommended alternatives for this product can be found below, along with publications, customer reviews and Q&amp;As</p>

#### Properties

<b>Form</b>	Liquid
<b>Storage instructions</b>	Shipped at 4°C. Upon delivery aliquot and store at -20°C. Avoid freeze / thaw cycles.
<b>Storage buffer</b>	pH: 7 Preservative: 0.1% Sodium azide Constituents: 0.021% PBS, 1.764% Sodium citrate, 1.815% Tris
<b>Purity</b>	Immunogen affinity purified
<b>Clonality</b>	Polyclonal
<b>Isotype</b>	IgG

#### Applications

## The Abpromise guarantee

Our **Abpromise guarantee** covers the use of ab10361 in the following tested applications.

The application notes include recommended starting dilutions; optimal dilutions/concentrations should be determined by the end user.

Application	Abreviews	Notes
WB		1/10000 - 1/20000. Detects a band of approximately 140 kDa (predicted molecular weight: 127 kDa).
IP		Use at 5-10 µg/mg of lysate.

## Target

### Function

Sequence-specific RNA-binding protein that regulates translation and mRNA stability by binding the 3'-UTR of mRNA targets. Its interactions and tissue specificity suggest that it may be required to support proliferation and self-renewal of stem cells by regulating the translation of key transcripts.

### Tissue specificity

Expressed in male germ cells of adult testis (at protein level). Highly expressed in testis and ovary. Predominantly expressed in stem cells and germ cells. Expressed at lower level in brain, heart, kidney, liver, muscle, placenta, intestine and stomach Expressed in cerebellum, corpus callosum, caudate nucleus, hippocampus, medulla oblongata and putamen. Expressed in all fetal tissues tested.

### Sequence similarities

Contains 1 PUM-HD domain.  
Contains 8 pumilio repeats.

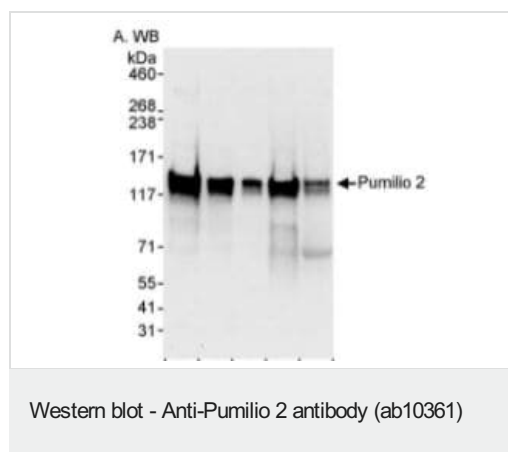
### Domain

The pumilio repeats mediate the association with RNA by packing together to form a right-handed superhelix that approximates a half doughnut. The number as well as the specific sequence of the repeats determine the specificity for target mRNAs.

### Cellular localization

Cytoplasm. Cytoplasmic granule. Cytoplasm > perinuclear region. The cytoplasmic granules are stress granules which are a dense aggregation in the cytosol composed of proteins and RNAs that appear when the cell is under stress. Colocalizes with NANOS3 in the stress granules (By similarity). Colocalizes with NANOS1 and SNAPIN in the perinuclear region of germ cells.

## Images



**All lanes :** Anti-Pumilio 2 antibody (ab10361) at 1/5000 dilution

**Lane 1 :** HeLa Whole cell lysate at 5 µg

**Lane 2 :** HeLa Whole cell lysate at 15 µg

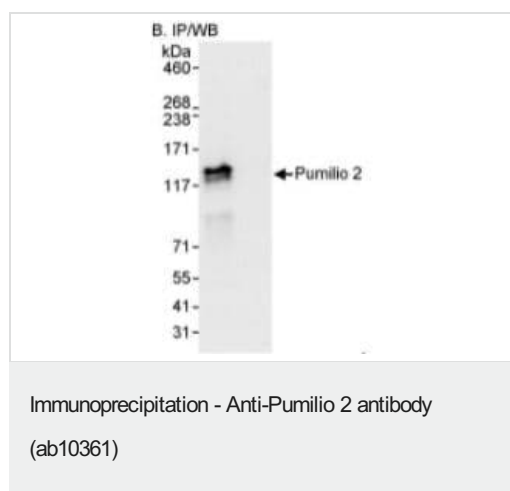
**Lane 3 :** HeLa Whole cell lysate at 50 µg

**Lane 4 :** HEK293T Whole cell lysate at 50 µg

**Lane 5 :** NIH 3T3 Whole cell lysate at 50 µg

**Predicted band size:** 127 kDa

Detection: Chemiluminescence with exposure time of 10 seconds



Pumilio 2 was immunoprecipitated from HeLa whole cell lysate with 3 µg/mg lysate ab10361. Western blot was performed from the immunoprecipitate using ab10361 at 1 µg/ml dilution.

Lane 1: ab10361 IP in HeLa whole cell lysate.

Lane 2: Control IgG IP in HeLa whole cell lysate.

**Please note:** All products are "FOR RESEARCH USE ONLY. NOT FOR USE IN DIAGNOSTIC PROCEDURES"

### Our Abpromise to you: Quality guaranteed and expert technical support

---

- Replacement or refund for products not performing as stated on the datasheet
- Valid for 12 months from date of delivery
- Response to your inquiry within 24 hours
- We provide support in Chinese, English, French, German, Japanese and Spanish
- Extensive multi-media technical resources to help you
- We investigate all quality concerns to ensure our products perform to the highest standards

If the product does not perform as described on this datasheet, we will offer a refund or replacement. For full details of the Abpromise, please visit <https://www.abcam.com/abpromise> or contact our technical team.

### Terms and conditions

---

- Guarantee only valid for products bought direct from Abcam or one of our authorized distributors