




Product datasheet

Anti-PYGL antibody - C-terminal ab190243

★ ★ ★ ★ ★ [1 Abreviews](#) [1 References](#) [2 Images](#)

Overview

Product name	Anti-PYGL antibody - C-terminal
Description	Rabbit polyclonal to PYGL - C-terminal
Host species	Rabbit
Tested applications	Suitable for: WB, IP
Species reactivity	Reacts with: Mouse, Human Predicted to work with: Chimpanzee, Rhesus monkey, Gorilla 
Immunogen	Synthetic peptide within Human PYGL aa 750 to the C-terminus (C terminal). The exact immunogen sequence used to generate this antibody is proprietary information. If additional detail on the immunogen is needed to determine the suitability of the antibody for your needs, please <u>contact</u> our Scientific Support team to discuss your requirements. Database link: <u>P06737</u> <div>  Run BLAST with  Run BLAST with </div>
Positive control	HeLa, 293T and NIH 3T3 whole cell lysates
General notes	<p>The Life Science industry has been in the grips of a reproducibility crisis for a number of years. Abcam is leading the way in addressing this with our range of recombinant monoclonal antibodies and knockout edited cell lines for gold-standard validation. Please check that this product meets your needs before purchasing.</p> <p>If you have any questions, special requirements or concerns, please send us an inquiry and/or contact our Support team ahead of purchase. Recommended alternatives for this product can be found below, along with publications, customer reviews and Q&As</p>

Properties

Form	Liquid
Storage instructions	Shipped at 4°C. Store at +4°C short term (1-2 weeks). Upon delivery aliquot. Store at -20°C long term. Avoid freeze / thaw cycle.
Storage buffer	<p>pH: 7</p> <p>Preservative: 0.09% Sodium azide</p> <p>Constituent: 99% Tris citrate/phosphate</p> <p>pH 7 to 8</p>

Purity	Immunogen affinity purified
Purification notes	ab190243 was affinity purified using an epitope specific to PYGL immobilized on solid support.
Clonality	Polyclonal
Isotype	IgG

Applications

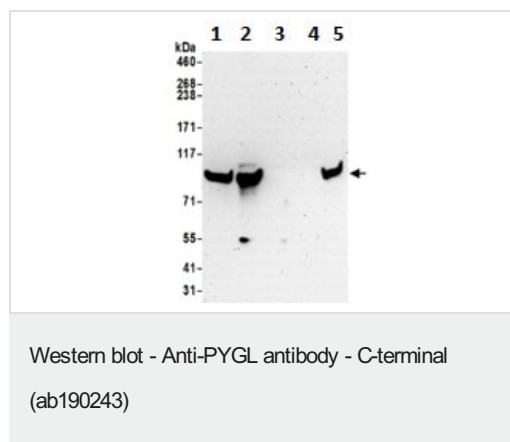
The Abpromise guarantee Our **Abpromise guarantee** covers the use of ab190243 in the following tested applications. The application notes include recommended starting dilutions; optimal dilutions/concentrations should be determined by the end user.

Application	Abreviews	Notes
WB	★ ★ ★ ★ ★ (1)	1/2000 - 1/10000. Predicted molecular weight: 97 kDa.
IP		Use at 1-10 µg/mg of lysate.

Target

Function	Phosphorylase is an important allosteric enzyme in carbohydrate metabolism. Enzymes from different sources differ in their regulatory mechanisms and in their natural substrates. However, all known phosphorylases share catalytic and structural properties.
Involvement in disease	Defects in PYGL are the cause of glycogen storage disease type 6 (GSD6) [MIM:232700]. A metabolic disorder characterized by mild to moderate hypoglycemia, mild ketosis, growth retardation, and prominent hepatomegaly. Heart and skeletal muscle are not affected.
Sequence similarities	Belongs to the glycogen phosphorylase family.
Post-translational modifications	Phosphorylation of Ser-15 converts phosphorylase B (unphosphorylated) to phosphorylase A.

Images



All lanes : Anti-PYGL antibody - C-terminal (ab190243) at 0.1 µg/ml

Lane 1 : HeLa whole cell lysate

Lane 2 : 293T whole cell lysate

Lane 3 : Jurkat whole cell lysate

Lane 4 : TCMK-1 whole cell lysate

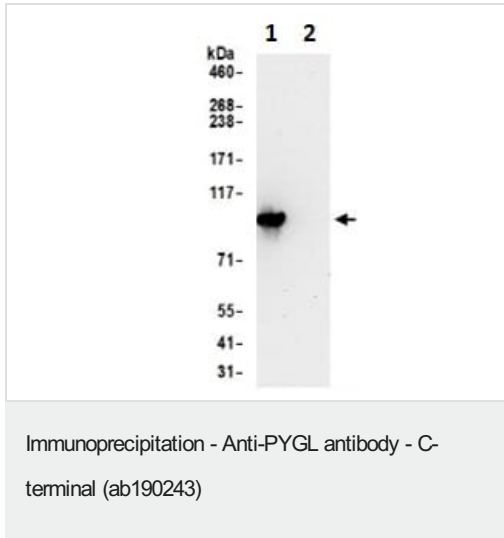
Lane 5 : NIH 3T3 whole cell lysate

Lysates/proteins at 50 µg per lane.

Developed using the ECL technique.

Predicted band size: 97 kDa

Exposure time: 3 minutes



Immunoprecipitation analysis of 293T cell lysate (in RIPA buffer, 0.5 or 1.0 mg per IP reaction; 20% of IP loaded) labeling PYGL using ab190243 at 6 µg per reaction (lane 1). a Control IgG was used in lane 2. For blotting immunoprecipitated PYGL, ab190243 was used at 1 µg/ml. Detection: Chemiluminescence with an exposure time of 30 seconds.

Please note: All products are "FOR RESEARCH USE ONLY. NOT FOR USE IN DIAGNOSTIC PROCEDURES"

Our Abpromise to you: Quality guaranteed and expert technical support

- Replacement or refund for products not performing as stated on the datasheet
- Valid for 12 months from date of delivery
- Response to your inquiry within 24 hours
- We provide support in Chinese, English, French, German, Japanese and Spanish
- Extensive multi-media technical resources to help you
- We investigate all quality concerns to ensure our products perform to the highest standards

If the product does not perform as described on this datasheet, we will offer a refund or replacement. For full details of the Abpromise, please visit <https://www.abcam.com/abpromise> or contact our technical team.

Terms and conditions

- Guarantee only valid for products bought direct from Abcam or one of our authorized distributors