




Product datasheet

Anti-PYGM antibody ab231963

[2 References](#) [6 Images](#)

Overview

| | |
|----------------------------|---|
| Product name | Anti-PYGM antibody |
| Description | Rabbit polyclonal to PYGM |
| Host species | Rabbit |
| Tested applications | Suitable for: IHC-P, WB |
| Species reactivity | Reacts with: Mouse, Rat, Human Predicted to work with: Sheep, Rabbit, Cow, Cynomolgus monkey  |
| Immunogen | Recombinant fragment (His-tag) corresponding to Mouse PYGM aa 1-200. Expressed in E.coli. Database link: Q9WUB3  Run BLAST with  Run BLAST with |
| Positive control | WB: Recombinant mouse PYGM protein; mouse skeletal muscle and liver lysates; rat skeletal muscle lysate; HepG2 whole cell lysate (ab7900). IHC-P: Mouse skeletal muscle tissue. |
| General notes | <p>The Life Science industry has been in the grips of a reproducibility crisis for a number of years. Abcam is leading the way in addressing this with our range of recombinant monoclonal antibodies and knockout edited cell lines for gold-standard validation. Please check that this product meets your needs before purchasing.</p> <p>If you have any questions, special requirements or concerns, please send us an inquiry and/or contact our Support team ahead of purchase. Recommended alternatives for this product can be found below, along with publications, customer reviews and Q&As</p> |

Properties

| | |
|-----------------------------|---|
| Form | Liquid |
| Storage instructions | Shipped at 4°C. Store at +4°C short term (1-2 weeks). Upon delivery aliquot. Store at -20°C long term. Avoid freeze / thaw cycle. |
| Storage buffer | pH: 7.40 Preservative: 0.011% Proclin 300 Constituents: 55.77% Glycerol (glycerin, glycerine), 44.219% PBS |
| Purity | Immunogen affinity purified |
| Purification notes | Antigen-specific affinity chromatography followed by Protein A affinity chromatography. |
| Clonality | Polyclonal |

Applications

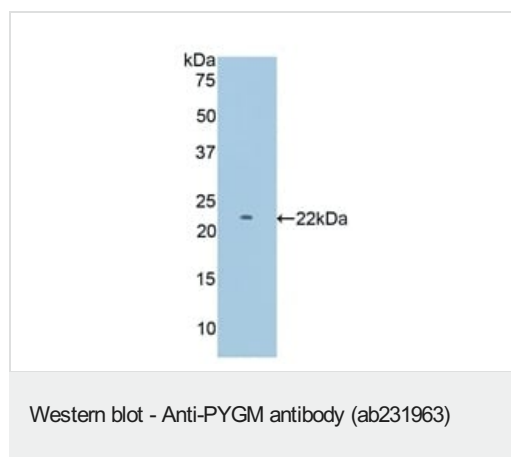
The Abpromise guarantee Our **Abpromise guarantee** covers the use of ab231963 in the following tested applications. The application notes include recommended starting dilutions; optimal dilutions/concentrations should be determined by the end user.

| Application | Abreviews | Notes |
|-------------|-----------|---|
| IHC-P | | Use a concentration of 5 - 20 µg/ml. |
| WB | | Use a concentration of 0.2 - 2 µg/ml. Predicted molecular weight: 97 kDa. |

Target

| | |
|---|---|
| Function | Phosphorylase is an important allosteric enzyme in carbohydrate metabolism. Enzymes from different sources differ in their regulatory mechanisms and in their natural substrates. However, all known phosphorylases share catalytic and structural properties. |
| Involvement in disease | Defects in PYGM are the cause of glycogen storage disease type 5 (GSD5) [MIM:232600]; also known as McArdle disease. GSD5 is a metabolic disorder resulting in myopathy characterized by exercise intolerance, cramps, muscle weakness and recurrent myoglobinuria. |
| Sequence similarities | Belongs to the glycogen phosphorylase family. |
| Post-translational modifications | Phosphorylation of Ser-15 converts phosphorylase B (unphosphorylated) to phosphorylase A. |

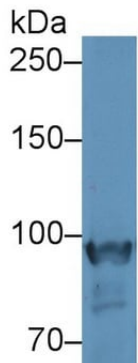
Images



Anti-PYGM antibody (ab231963) at 2 µg/ml + Recombinant mouse PYGM protein

Predicted band size: 97 kDa

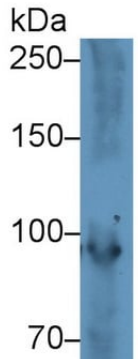
Recombinant fragment (His-tag) corresponding to Mouse PYGM aa 11-187, 22kDa.



Anti-PYGM antibody (ab231963) at 2 μ g/ml + Mouse skeletal muscle lysate

Predicted band size: 97 kDa

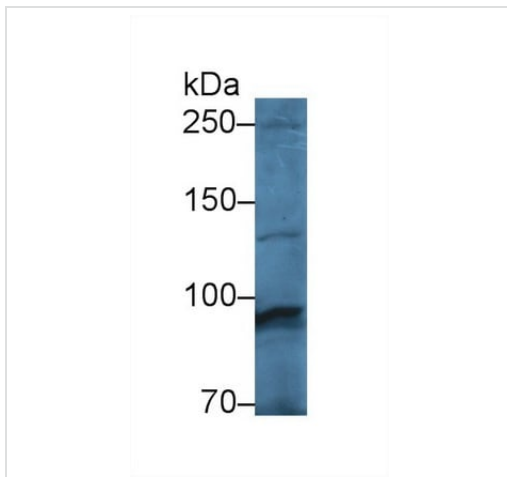
Western blot - Anti-PYGM antibody (ab231963)



Anti-PYGM antibody (ab231963) at 2 μ g/ml + Rat skeletal muscle lysate

Predicted band size: 97 kDa

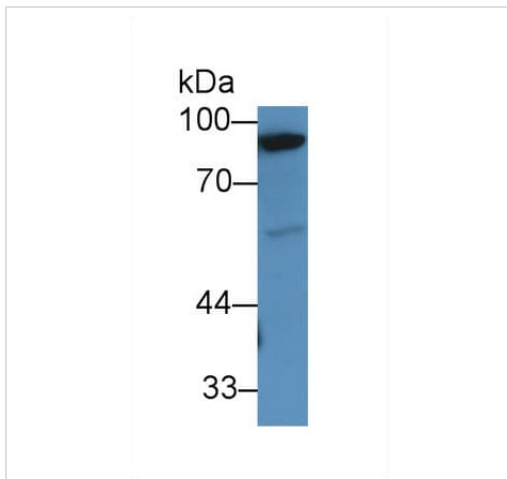
Western blot - Anti-PYGM antibody (ab231963)



Western blot - Anti-PYGM antibody (ab231963)

Anti-PYGM antibody (ab231963) at 2 μ g/ml + HepG2 (human liver hepatocellular carcinoma cell line) cell lysate

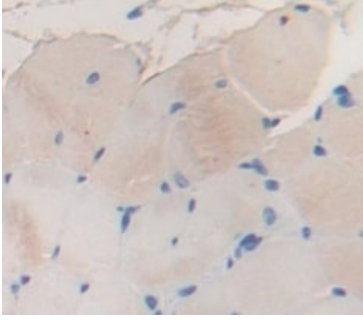
Predicted band size: 97 kDa



Western blot - Anti-PYGM antibody (ab231963)

Anti-PYGM antibody (ab231963) at 2 μ g/ml + Mouse liver lysate

Predicted band size: 97 kDa



Formalin-fixed, paraffin-embedded mouse skeletal muscle tissue stained for PYGM using ab231963 at 20 µg/ml in immunohistochemical analysis. DAB staining.

Immunohistochemistry (Formalin/PFA-fixed paraffin-embedded sections) - Anti-PYGM antibody (ab231963)

Please note: All products are "FOR RESEARCH USE ONLY. NOT FOR USE IN DIAGNOSTIC PROCEDURES"

Our Abpromise to you: Quality guaranteed and expert technical support

- Replacement or refund for products not performing as stated on the datasheet
- Valid for 12 months from date of delivery
- Response to your inquiry within 24 hours
- We provide support in Chinese, English, French, German, Japanese and Spanish
- Extensive multi-media technical resources to help you
- We investigate all quality concerns to ensure our products perform to the highest standards

If the product does not perform as described on this datasheet, we will offer a refund or replacement. For full details of the Abpromise, please visit <https://www.abcam.com/abpromise> or contact our technical team.

Terms and conditions

- Guarantee only valid for products bought direct from Abcam or one of our authorized distributors