

Product datasheet

Anti-Pyroglutamate beta Amyloid antibody [IBR-10-2-3] ab264034

RabMAb

[4 Images](#)

Overview

Product name	Anti-Pyroglutamate beta Amyloid antibody [IBR-10-2-3]
Description	Rabbit monoclonal [IBR-10-2-3] to Pyroglutamate beta Amyloid
Host species	Rabbit
Tested applications	Suitable for: WB, Dot blot, Indirect ELISA Unsuitable for: IHC-P
Species reactivity	Reacts with: Human
Immunogen	Synthetic peptide. This information is proprietary to Abcam and/or its suppliers.
Positive control	WB: beta Amyloid pE3-42 (aa674-713) peptide, beta Amyloid 1-42 (aa672-713) peptide Indirect ELISA: Human Pyroglutamate amyloid beta (pE3-42A), Human Amyloid beta peptide (Ab42) Dot blot: beta Amyloid pE3-42 (aa674-713) peptide, beta Amyloid 1-42 (aa672-713) peptide
General notes	This product is a recombinant monoclonal antibody, which offers several advantages including: <ul style="list-style-type: none">- High batch-to-batch consistency and reproducibility- Improved sensitivity and specificity- Long-term security of supply- Animal-free production For more information see here . Our RabMAb [®] technology is a patented hybridoma-based technology for making rabbit monoclonal antibodies. For details on our patents, please refer to RabMAb[®] patents .

Properties

Form	Liquid
Storage instructions	Shipped at 4°C. Store at +4°C short term (1-2 weeks). Upon delivery aliquot. Store at -20°C long term. Avoid freeze / thaw cycle.
Storage buffer	pH: 7.20 Preservative: 0.01% Sodium azide Constituents: 59% PBS, 40% Glycerol (glycerin, glycerine), 0.05% BSA
Purity	Protein A purified

Clonality Monoclonal
Clone number IBR-10-2-3
Isotype IgG1

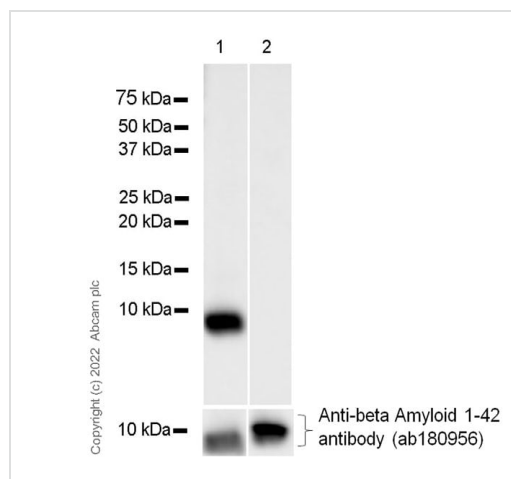
Applications

The Abpromise guarantee Our **Abpromise guarantee** covers the use of ab264034 in the following tested applications. The application notes include recommended starting dilutions; optimal dilutions/concentrations should be determined by the end user.

Application	Abreviews	Notes
WB		1/1000.
Dot blot		1/2000.
Indirect ELISA		Use a concentration of 0.0625 µg/ml.

Application notes Is unsuitable for IHC-P.

Images



Western blot - Anti-Pyroglutamate beta Amyloid antibody [IBR-10-2-3] (ab264034)

All lanes : Anti-Pyroglutamate beta Amyloid antibody [IBR-10-2-3] (ab264034) at 1/1000 dilution

Lane 1 : beta Amyloid pE3-42 (aa674-713) peptide 100ng

Lane 2 : beta Amyloid 1-42 (aa672-713) peptide 100ng

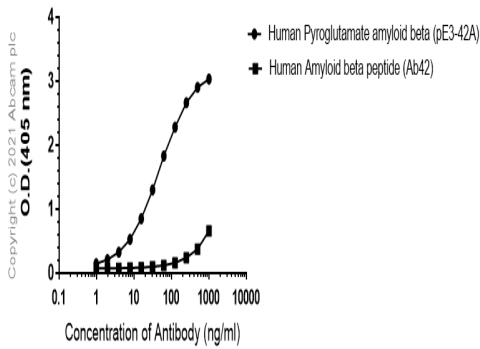
Secondary

All lanes : Goat Anti-Rabbit IgG H&L (HRP) (**ab97051**) at 1/1000000 dilution

Exposure time: 3 seconds

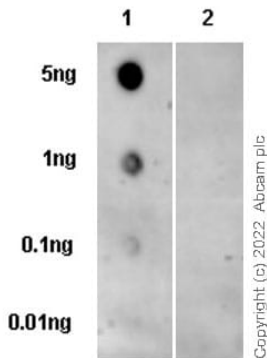
Blocking and diluting buffer and concentration was 5% NFDm/TBST.

Indirect ELISA antibody dose-response curve
antigen at 1000 ng/ml



Indirect ELISA - Anti-Pyroglutamate beta Amyloid antibody [IBR-10-2-3] (ab264034)

Indirect ELISA antibody dose-response curve using ab264034 with antigen at 1000 ng/ml



Dot Blot - Anti-Pyroglutamate beta Amyloid antibody [IBR-10-2-3] (ab264034)

Dot blot analysis of pyroglutamate beta amyloid using ab264034 at 1/2000 dilution, followed by a Goat Anti-Rabbit IgG, (H+L), Peroxidase conjugated (**ab97051**) at 1/100,000 dilution.

Blocking and diluting buffer and concentration was 5% NFDN/TBST.

Lane 1: beta Amyloid pE3-42 (aa674-713) peptide

Lane 2: beta Amyloid 1-42 (aa672-713) peptide

Exposure time: 3 minutes.

Why choose a recombinant antibody?



Anti-Pyroglutamate beta Amyloid antibody [IBR-10-2-3] (ab264034)

Please note: All products are "FOR RESEARCH USE ONLY. NOT FOR USE IN DIAGNOSTIC PROCEDURES"

Our Abpromise to you: Quality guaranteed and expert technical support

- Replacement or refund for products not performing as stated on the datasheet
- Valid for 12 months from date of delivery
- Response to your inquiry within 24 hours
- We provide support in Chinese, English, French, German, Japanese and Spanish
- Extensive multi-media technical resources to help you
- We investigate all quality concerns to ensure our products perform to the highest standards

If the product does not perform as described on this datasheet, we will offer a refund or replacement. For full details of the Abpromise, please visit <https://www.abcam.com/abpromise> or contact our technical team.

Terms and conditions

- Guarantee only valid for products bought direct from Abcam or one of our authorized distributors