





Product datasheet

Anti-RAB11B antibody ab3612

★★★★★ [8 Abreviews](#) [33 References](#) [3 Images](#)

Overview

Product name	Anti-RAB11B antibody
Description	Rabbit polyclonal to RAB11B
Host species	Rabbit
Tested applications	Suitable for: ICC, WB
Species reactivity	Reacts with: Dog, Human Predicted to work with: Mouse, Rat, Rabbit, Chicken, Cow, Pig, Non human primates 
Immunogen	Synthetic peptide corresponding to Human RAB11B aa 1-100.  Run BLAST with  Run BLAST with 
Positive control	WB: canine MDCK, human PC3; ICC: HeLa
General notes	<p>The Life Science industry has been in the grips of a reproducibility crisis for a number of years. Abcam is leading the way in addressing this with our range of recombinant monoclonal antibodies and knockout edited cell lines for gold-standard validation. Please check that this product meets your needs before purchasing.</p> <p>If you have any questions, special requirements or concerns, please send us an inquiry and/or contact our Support team ahead of purchase. Recommended alternatives for this product can be found below, along with publications, customer reviews and Q&As</p>

Properties

Form	Liquid
Storage instructions	Shipped at 4°C. Store at +4°C short term (1-2 weeks). Upon delivery aliquot. Store at -20°C. Avoid freeze / thaw cycle.
Storage buffer	Preservative: 0.05% Sodium azide Constituents: 99% PBS, 0.1% BSA
Purity	Immunogen affinity purified
Clonality	Polyclonal
Isotype	IgG

Applications

The Abpromise guarantee

Our **Abpromise guarantee** covers the use of ab3612 in the following tested applications.

The application notes include recommended starting dilutions; optimal dilutions/concentrations should be determined by the end user.

Application	Abreviews	Notes
ICC		1/50 - 1/200.
WB	★★★★★ (2)	Use at an assay dependent concentration. Detects a band of approximately 22 kDa (predicted molecular weight: 24 kDa). By Western blot, this antibody detects an ~22 kDa protein representing Rab 11 in CV1, PC3, and HeLa cell extract. Another less prominent, unknown band is also detected by this antibody at ~35 kDa.

Target

Function

The small GTPases Rab are key regulators of intracellular membrane trafficking, from the formation of transport vesicles to their fusion with membranes. Rabs cycle between an inactive GDP-bound form and an active GTP-bound form that is able to recruit to membranes different set of downstream effectors directly responsible for vesicle formation, movement, tethering and fusion. That Rab plays a role in endocytic recycling, regulating apical recycling of several transmembrane proteins including cystic fibrosis transmembrane conductance regulator/CFTR, epithelial sodium channel/ENaC, potassium voltage-gated channel, and voltage-dependent L-type calcium channel. May also regulate constitutive and regulated secretion, like insulin granule exocytosis. Required for melanosome transport and release from melanocytes. Also regulates V-ATPase intracellular transport in response to extracellular acidosis.

Sequence similarities

Belongs to the small GTPase superfamily. Rab family.

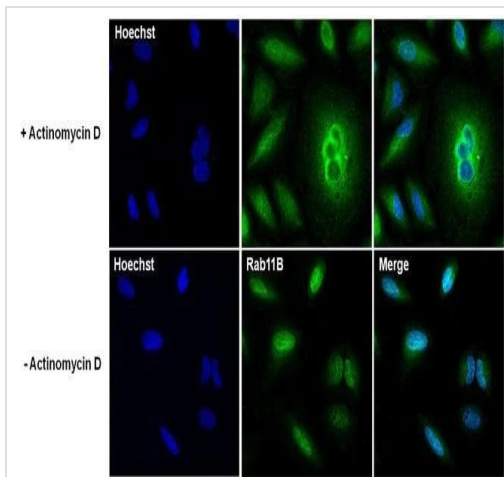
Post-translational modifications

Citrullinated by PAD4.

Cellular localization

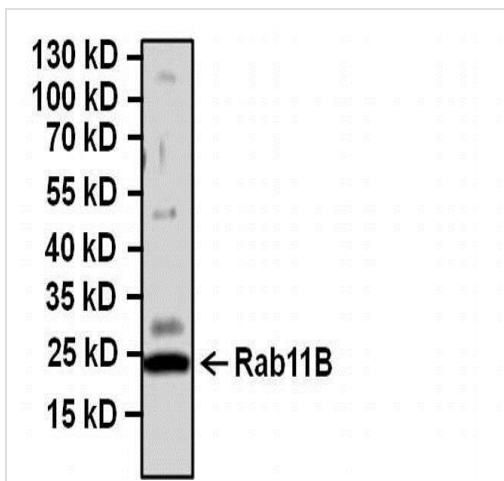
Recycling endosome membrane. Cytoplasmic vesicle, secretory vesicle, synaptic vesicle membrane. Cytoplasmic vesicle, phagosome membrane. Recruited to phagosomes containing S.aureus.

Images



Immunocytochemistry - Anti-RAB11B antibody (ab3612)

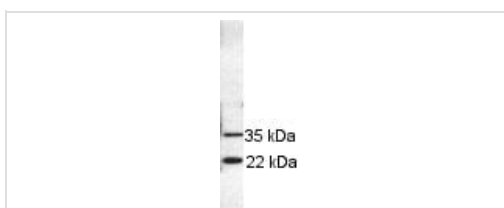
Immunocytochemical analysis of 4% paraformaldehyde-fixed 0.1% Triton X-100 permeabilized HeLa cells treated/untreated with actinomycin D. Rab11B is stained with ab3612 at a 1/100 dilution and a Goat anti-Rabbit IgG (H+L) Secondary Antibody, Alexa Fluor Plus 488 conjugate at a 1/500 dilution (green). Nuclear counterstaining is using Hoechst 33342 (blue).



Western blot - Anti-RAB11B antibody (ab3612)

Anti-RAB11B antibody (ab3612) at 1/500 dilution + MDCK (canine kidney cell line) whole cell lysate at 20 µg

Predicted band size: 24 kDa



Western blot - Anti-RAB11B antibody (ab3612)

ab3612 used on PC3 cell extract.

Please note: All products are "FOR RESEARCH USE ONLY. NOT FOR USE IN DIAGNOSTIC PROCEDURES"

Our Promise to you: Quality guaranteed and expert technical support

- Replacement or refund for products not performing as stated on the datasheet
- Valid for 12 months from date of delivery
- Response to your inquiry within 24 hours

- We provide support in Chinese, English, French, German, Japanese and Spanish
- Extensive multi-media technical resources to help you
- We investigate all quality concerns to ensure our products perform to the highest standards

If the product does not perform as described on this datasheet, we will offer a refund or replacement. For full details of the Abpromise, please visit <https://www.abcam.com/abpromise> or contact our technical team.

Terms and conditions

- Guarantee only valid for products bought direct from Abcam or one of our authorized distributors