


Product datasheet

Anti-RAB11B antibody [EPR12725] ab175925

Recombinant RabMAb

★★★★★ [1 Abreviews](#) [1 References](#) [4 Images](#)

Overview

Product name	Anti-RAB11B antibody [EPR12725]
Description	Rabbit monoclonal [EPR12725] to RAB11B
Host species	Rabbit
Tested applications	Suitable for: Flow Cyt (Intra), WB, IP Unsuitable for: ICC/IF or IHC-P
Species reactivity	Reacts with: Human Predicted to work with: Mouse, Rat 
Immunogen	Synthetic peptide. This information is proprietary to Abcam and/or its suppliers.
Positive control	Fetal brain, 293T, U87-MG and Jurkat cell lysates; Jurkat cells
General notes	<p>This product is a recombinant monoclonal antibody, which offers several advantages including:</p> <ul style="list-style-type: none"> - High batch-to-batch consistency and reproducibility - Improved sensitivity and specificity - Long-term security of supply - Animal-free production <p>For more information see here.</p> <p>Our RabMAb[®] technology is a patented hybridoma-based technology for making rabbit monoclonal antibodies. For details on our patents, please refer to RabMAb[®] patents.</p>

Properties

Form	Liquid
Storage instructions	Shipped at 4°C. Store at +4°C short term (1-2 weeks). Upon delivery aliquot. Store at -20°C long term. Avoid freeze / thaw cycle.
Storage buffer	pH: 7.20 Preservative: 0.01% Sodium azide Constituents: 9% PBS, 40% Glycerol (glycerin, glycerine), 0.05% BSA, 50% Tissue culture supernatant
Purity	Tissue culture supernatant
Clonality	Monoclonal

Clone number	EPR12725
Isotype	IgG

Applications

The Abpromise guarantee Our **Abpromise guarantee** covers the use of ab175925 in the following tested applications. The application notes include recommended starting dilutions; optimal dilutions/concentrations should be determined by the end user.

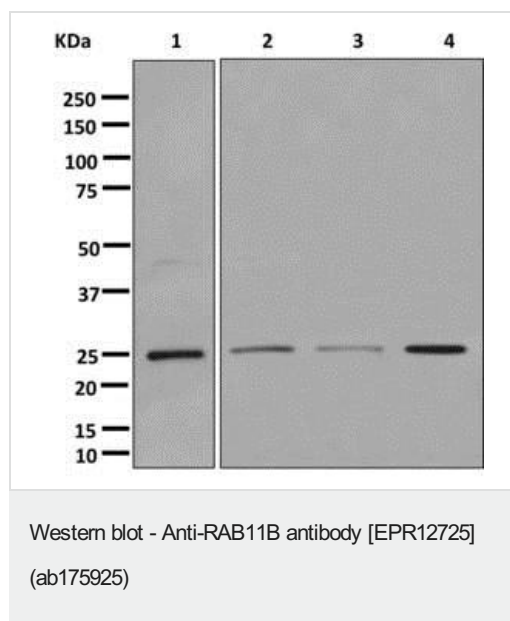
Application	Abreviews	Notes
Flow Cyt (Intra)		1/10 - 1/100. ab172730 - Rabbit monoclonal IgG, is suitable for use as an isotype control with this antibody.
WB	★★★★★ (1)	1/1000 - 1/5000. Predicted molecular weight: 25 kDa.
IP		1/10 - 1/100.

Application notes Is unsuitable for ICC/IF or IHC-P.

Target

Function	The small GTPases Rab are key regulators of intracellular membrane trafficking, from the formation of transport vesicles to their fusion with membranes. Rabs cycle between an inactive GDP-bound form and an active GTP-bound form that is able to recruit to membranes different set of downstream effectors directly responsible for vesicle formation, movement, tethering and fusion. That Rab plays a role in endocytic recycling, regulating apical recycling of several transmembrane proteins including cystic fibrosis transmembrane conductance regulator/CFTR, epithelial sodium channel/ENaC, potassium voltage-gated channel, and voltage-dependent L-type calcium channel. May also regulate constitutive and regulated secretion, like insulin granule exocytosis. Required for melanosome transport and release from melanocytes. Also regulates V-ATPase intracellular transport in response to extracellular acidosis.
Sequence similarities	Belongs to the small GTPase superfamily. Rab family.
Post-translational modifications	Citrullinated by PAD4.
Cellular localization	Recycling endosome membrane. Cytoplasmic vesicle, secretory vesicle, synaptic vesicle membrane. Cytoplasmic vesicle, phagosome membrane. Recruited to phagosomes containing S.aureus.

Images



All lanes : Anti-RAB11B antibody [EPR12725] (ab175925) at 1/1000 dilution

Lane 1 : Fetal brain tissue lysate

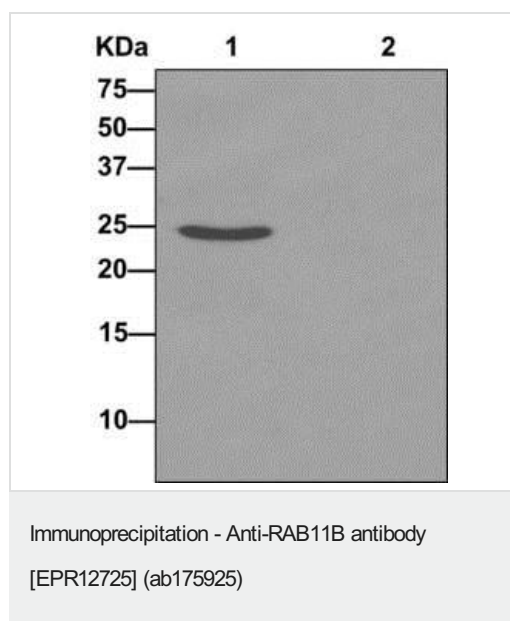
Lane 2 : 293T (Human embryonic kidney epithelial cell) cell lysate

Lane 3 : U-87 MG (Human glioblastoma-astrocytoma epithelial cell line) cell lysate

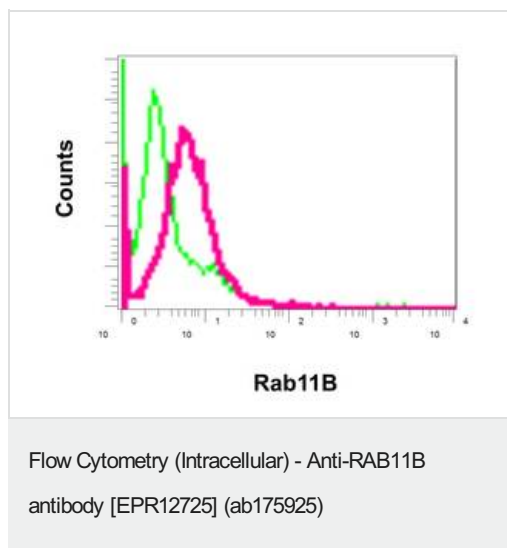
Lane 4 : Jurkat cell lysate

Lysates/proteins at 10 µg per lane.

Predicted band size: 25 kDa



Western blot analysis on immunoprecipitation pellet from (1) fetal brain lysate or (2) 1X PBS (negative control) using ab175925 at 1/10 dilution, and HRP-conjugated anti-rabbit IgG preferentially detecting the non-reduced form of rabbit IgG.



Intracellular flow cytometric analysis of Jurkat cells labeling RAB11B with ab175925 at 1/10 dilution (red) or a rabbit IgG (negative) (green).

Why choose a recombinant antibody?

 <p>Research with confidence Consistent and reproducible results</p>	 <p>Long-term and scalable supply Recombinant technology</p>
 <p>Success from the first experiment Confirmed specificity</p>	 <p>Ethical standards compliant Animal-free production</p>

Anti-RAB11B antibody [EPR12725] (ab175925)

Please note: All products are "FOR RESEARCH USE ONLY. NOT FOR USE IN DIAGNOSTIC PROCEDURES"

Our Abpromise to you: Quality guaranteed and expert technical support

- Replacement or refund for products not performing as stated on the datasheet
- Valid for 12 months from date of delivery
- Response to your inquiry within 24 hours
- We provide support in Chinese, English, French, German, Japanese and Spanish
- Extensive multi-media technical resources to help you
- We investigate all quality concerns to ensure our products perform to the highest standards

If the product does not perform as described on this datasheet, we will offer a refund or replacement. For full details of the Abpromise, please visit <https://www.abcam.com/abpromise> or contact our technical team.

Terms and conditions

- Guarantee only valid for products bought direct from Abcam or one of our authorized distributors