


Product datasheet

Anti-RAB12 (phospho S106) antibody [MJF-R25-9] ab256487

Recombinant RabMAb

[1 References](#) [4 Images](#)

Overview

Product name	Anti-RAB12 (phospho S106) antibody [MJF-R25-9]
Description	Rabbit monoclonal [MJF-R25-9] to RAB12 (phospho S106)
Host species	Rabbit
Tested applications	Suitable for: Dot blot, WB Unsuitable for: ICC/IF, IHC-P or IP
Species reactivity	Reacts with: Mouse, Recombinant fragment Predicted to work with: Human 
Immunogen	Synthetic peptide. This information is proprietary to Abcam and/or its suppliers.
Positive control	Dot Blot: RAB12 (phospho S106) peptide. WB: Mouse embryonic fibroblasts from LRRK2[R1441C] knock in mice without MLi-2 treatment whole cell lysate, 293T transfected with RAB12 expression vector containing a myc-His-tag®, whole cell lysate.
General notes	<p>This product is a recombinant monoclonal antibody, which offers several advantages including:</p> <ul style="list-style-type: none"> - High batch-to-batch consistency and reproducibility - Improved sensitivity and specificity - Long-term security of supply - Animal-free production <p>For more information see here.</p> <p>Our RabMAb® technology is a patented hybridoma-based technology for making rabbit monoclonal antibodies. For details on our patents, please refer to RabMAb® patents.</p> <p>This antibody was developed with support from The Michael J. Fox Foundation.</p>



Properties

Form	Liquid
Storage instructions	Shipped at 4°C. Store at +4°C short term (1-2 weeks). Upon delivery aliquot. Store at -20°C long

	term. Avoid freeze / thaw cycle.
Storage buffer	pH: 7.2 Preservative: 0.01% Sodium azide Constituents: PBS, 40% Glycerol, 0.05% BSA
Purity	Protein A purified
Clonality	Monoclonal
Clone number	MJF-R25-9
Isotype	IgG

Applications

The Abpromise guarantee Our **Abpromise guarantee** covers the use of ab256487 in the following tested applications. The application notes include recommended starting dilutions; optimal dilutions/concentrations should be determined by the end user.

Application	Abreviews	Notes
Dot blot		1/1000.
WB		1/1000. Detects a band of approximately 27 kDa (predicted molecular weight: 27 kDa). The antibody also reacts with unidentifiable proteins greater than 60 kDa.

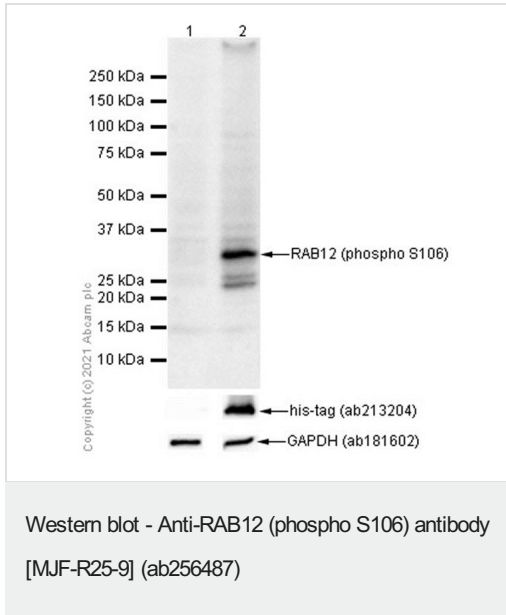
Application notes Is unsuitable for ICC/IF, IHC-P or IP.

Target

Sequence similarities Belongs to the small GTPase superfamily. Rab family.

Cellular localization Golgi apparatus membrane.

Images



All lanes : Anti-RAB12 (phospho S106) antibody [MJF-R25-9] (ab256487) at 1/1000 dilution

Lane 1 : 293T (Human embryonic kidney epithelial cell) transfected with an empty vector, containing a myc-His-tag®, whole cell lysate

Lane 2 : 293T transfected with RAB12 expression vector containing a myc-His-tag®, whole cell lysate

Lysates/proteins at 20 µg per lane.

Secondary

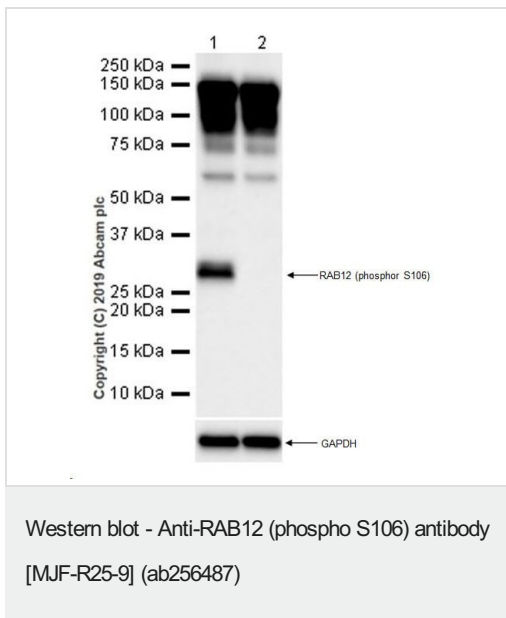
All lanes : Goat Anti-Rabbit IgG H&L (HRP) ([ab97051](#)) at 1/20000 dilution

Predicted band size: 27 kDa

Exposure time: 120 seconds

Blocking and diluting buffer and concentration: 5% NFDM/TBST.

Observed Mw 30kDa



All lanes : Anti-RAB12 (phospho S106) antibody [MJF-R25-9] (ab256487) at 1/1000 dilution

Lane 1 : Mouse embryonic fibroblasts from LRRK2[R1441C] knock in mice without MLi-2 treatment, whole cell lysate

Lane 2 : Mouse embryonic fibroblasts from LRRK2[R1441C] knock in mice treated with 100nM MLi-2 for 90 min, whole cell lysate

Lysates/proteins at 20 µg per lane.

Secondary

All lanes : Goat Anti-Rabbit IgG H&L (HRP) ([ab97051](#)) at 1/100000 dilution

Predicted band size: 27 kDa

Exposure time: 48 seconds

This antibody was used in the Mir, Tonelli et al. 2018 paper

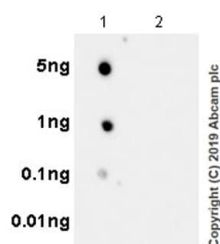
(PMID: 29743203).

MLi-2 is a potent, selective LARRK2 kinase inhibitor (PMID: 26407721).

The lysates were kindly provided by Professor Dario Alessi from University of Dundee.

The antibody also reacts with unidentifiable proteins greater than 60 kDa.

Blocking/Dilution buffer: AdvanBlock.



Dot Blot - Anti-RAB12 (phospho S106) antibody [MJF-R25-9] (ab256487 at a 1/1000 dilution).

Goat Anti-Rabbit IgG, (H+L), Peroxidase conjugated ([ab97051](#)) was used as the secondary at 1/100,000 dilution.

Lane 1: RAB12 (phospho S106) peptide.

Lane 2: RAB12 non-phospho peptide.

Exposure time: 10 seconds.

Blocking/Dilution buffer: 5% NFDm/TBST.

Why choose a recombinant antibody?



Research with confidence
Consistent and reproducible results



Long-term and scalable supply
Recombinant technology



Success from the first experiment
Confirmed specificity



Ethical standards compliant
Animal-free production

Anti-RAB12 (phospho S106) antibody [MJF-R25-9] (ab256487)

Please note: All products are "FOR RESEARCH USE ONLY. NOT FOR USE IN DIAGNOSTIC PROCEDURES"

Our Abpromise to you: Quality guaranteed and expert technical support

- Replacement or refund for products not performing as stated on the datasheet
- Valid for 12 months from date of delivery
- Response to your inquiry within 24 hours
- We provide support in Chinese, English, French, German, Japanese and Spanish
- Extensive multi-media technical resources to help you
- We investigate all quality concerns to ensure our products perform to the highest standards

If the product does not perform as described on this datasheet, we will offer a refund or replacement. For full details of the Abpromise, please visit <https://www.abcam.com/abpromise> or contact our technical team.

Terms and conditions

- Guarantee only valid for products bought direct from Abcam or one of our authorized distributors