

Anti-Rab17 antibody ab155135

[3 Images](#)

Overview

Product name	Anti-Rab17 antibody
Description	Rabbit polyclonal to Rab17
Host species	Rabbit
Tested applications	Suitable for: WB, IHC-P, ICC/IF
Species reactivity	Reacts with: Human
Immunogen	Recombinant fragment, corresponding to a region within amino acids 1-210 of Human Rab17 (Q9H0T7).
Positive control	NT2D1, IMR32, U87-MG and MCF7 whole cell lysates, MCF7 cells, H661 xenograft
General notes	<p>The Life Science industry has been in the grips of a reproducibility crisis for a number of years. Abcam is leading the way in addressing this with our range of recombinant monoclonal antibodies and knockout edited cell lines for gold-standard validation. Please check that this product meets your needs before purchasing.</p> <p>If you have any questions, special requirements or concerns, please send us an inquiry and/or contact our Support team ahead of purchase. Recommended alternatives for this product can be found below, along with publications, customer reviews and Q&As</p>

Properties

Form	Liquid
Storage instructions	Shipped at 4°C. Upon delivery aliquot. Store at -20°C or -80°C. Avoid freeze / thaw cycle.
Storage buffer	<p>pH: 7.00</p> <p>Preservative: 0.01% Thimerosal (merthiolate)</p> <p>Constituents: 1.21% Tris, 0.75% Glycine, 20% Glycerol (glycerin, glycerine)</p>
Purity	Immunogen affinity purified
Clonality	Polyclonal
Isotype	IgG

Applications

The Abpromise guarantee Our **Abpromise guarantee** covers the use of ab155135 in the following tested applications.

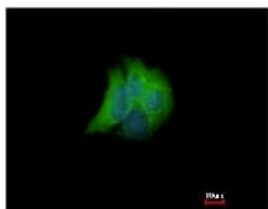
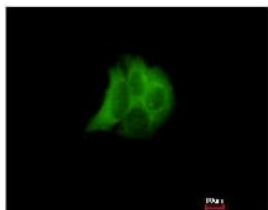
The application notes include recommended starting dilutions; optimal dilutions/concentrations should be determined by the end user.

Application	Abreviews	Notes
WB		1/500 - 1/3000. Predicted molecular weight: 23 kDa.
IHC-P		1/100 - 1/1000. Perform heat mediated antigen retrieval with citrate buffer pH 6 before commencing with IHC staining protocol.
ICC/IF		1/100 - 1/1000.

Target

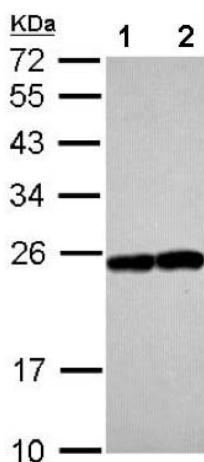
Function	Might be involved in transcellular transport.
Sequence similarities	Belongs to the small GTPase superfamily. Rab family.
Cellular localization	Cell membrane.

Images



Immunofluorescent analysis of methanol-fixed MCF7 cells labeling Rab17 with ab155135 at 1/200. Image at the bottom costained with Hoechst 33342.

Immunocytochemistry/ Immunofluorescence - Anti-Rab17 antibody (ab155135)



Western blot - Anti-Rab17 antibody (ab155135)

All lanes : Anti-Rab17 antibody (ab155135) at 1/2000 dilution

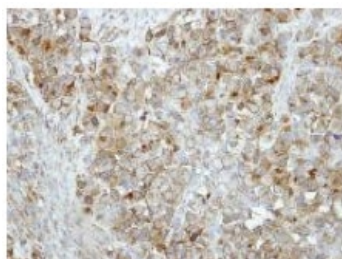
Lane 1 : U87-MG whole cell lysate

Lane 2 : MCF7 whole cell lysate

Lysates/proteins at 30 µg per lane.

Predicted band size: 23 kDa

12% SDS PAGE



Immunohistochemistry (Formalin/PFA-fixed paraffin-embedded sections) - Anti-Rab17 antibody (ab155135)

Immunohistochemical analysis of paraffin embedded H661 xenograft labeling Rab17 with ab155135 antibody at 1/500.

Please note: All products are "FOR RESEARCH USE ONLY. NOT FOR USE IN DIAGNOSTIC PROCEDURES"

Our Abpromise to you: Quality guaranteed and expert technical support

- Replacement or refund for products not performing as stated on the datasheet
- Valid for 12 months from date of delivery
- Response to your inquiry within 24 hours
- We provide support in Chinese, English, French, German, Japanese and Spanish

- Extensive multi-media technical resources to help you
- We investigate all quality concerns to ensure our products perform to the highest standards

If the product does not perform as described on this datasheet, we will offer a refund or replacement. For full details of the Abpromise, please visit <https://www.abcam.com/abpromise> or contact our technical team.

Terms and conditions

- Guarantee only valid for products bought direct from Abcam or one of our authorized distributors