




Product datasheet

Anti-RAB1B antibody ab234717

1 Image

Overview

Product name	Anti-RAB1B antibody
Description	Rabbit polyclonal to RAB1B
Host species	Rabbit
Tested applications	Suitable for: ICC/IF
Species reactivity	Reacts with: Human Predicted to work with: Mouse, Rat, Cow, Pig, Cynomolgus monkey, Orangutan 
Immunogen	Recombinant fragment corresponding to Human RAB1B aa 100 to the C-terminus. Database link: Q9H0U4  Run BLAST with  Run BLAST with
Positive control	ICC/IF: U-251 cells.
General notes	<p>The Life Science industry has been in the grips of a reproducibility crisis for a number of years. Abcam is leading the way in addressing this with our range of recombinant monoclonal antibodies and knockout edited cell lines for gold-standard validation. Please check that this product meets your needs before purchasing.</p> <p>If you have any questions, special requirements or concerns, please send us an inquiry and/or contact our Support team ahead of purchase. Recommended alternatives for this product can be found below, along with publications, customer reviews and Q&As</p>

Properties

Form	Liquid
Storage instructions	Shipped at 4°C. Store at +4°C short term (1-2 weeks). Upon delivery aliquot. Store at -20°C long term. Avoid freeze / thaw cycle.
Storage buffer	pH: 7.40 Preservative: 0.03% Proclin 300 Constituents: PBS, 50% Glycerol (glycerin, glycerine)
Purity	Protein G purified
Purification notes	Purity >95%
Clonality	Polyclonal
Isotype	IgG

Applications

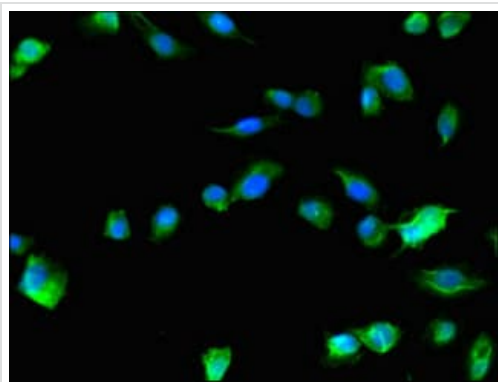
The Abpromise guarantee Our **Abpromise guarantee** covers the use of ab234717 in the following tested applications. The application notes include recommended starting dilutions; optimal dilutions/concentrations should be determined by the end user.

Application	Abreviews	Notes
ICC/IF		1/50 - 1/200.

Target

Function	Protein transport. Regulates vesicular transport between the endoplasmic reticulum and successive Golgi compartments.
Sequence similarities	Belongs to the small GTPase superfamily. Rab family.
Post-translational modifications	Prenylated; by GGTase II, only after interaction of the substrate with Rab escort protein 1 (REP1). AMPylation at Tyr-77 occurs in the switch 2 region and leads to moderate inactivation of the GTPase activity. It appears to prolong the lifetime of the GTP state of RAB1B by restricting access of GTPase effectors to switch 2 and blocking effector-stimulated GTP hydrolysis, thereby rendering RAB1B constitutively active.
Cellular localization	Membrane. Cytoplasm. Targeted by REP1 to membranes of specific subcellular compartments including endoplasmic reticulum, Golgi apparatus, and intermediate vesicles between these two compartments. In the GDP-form, colocalizes with GDI in the cytoplasm.

Images



Immunocytochemistry/ Immunofluorescence - Anti-RAB1B antibody (ab234717)

U-251 (human brain glioma cell line) cells stained for RAB1B (green) using ab234717 at 1/100 dilution in ICC/IF. Secondary antibody is Alexa Fluor® 488-conjugated Goat Anti-Rabbit IgG (H+L).

Please note: All products are "FOR RESEARCH USE ONLY. NOT FOR USE IN DIAGNOSTIC PROCEDURES"

Our Abpromise to you: Quality guaranteed and expert technical support

- Replacement or refund for products not performing as stated on the datasheet
- Valid for 12 months from date of delivery

- Response to your inquiry within 24 hours
- We provide support in Chinese, English, French, German, Japanese and Spanish
- Extensive multi-media technical resources to help you
- We investigate all quality concerns to ensure our products perform to the highest standards

If the product does not perform as described on this datasheet, we will offer a refund or replacement. For full details of the Abpromise, please visit <https://www.abcam.com/abpromise> or contact our technical team.

Terms and conditions

- Guarantee only valid for products bought direct from Abcam or one of our authorized distributors