

Anti-RAB23 antibody ab192420

[1 References](#) [1 Image](#)

Overview

Product name	Anti-RAB23 antibody
Description	Rabbit polyclonal to RAB23
Host species	Rabbit
Tested applications	Suitable for: WB
Species reactivity	Reacts with: Mouse, Human
Immunogen	Synthetic peptide within Human RAB23. The exact sequence is proprietary. Database link: Q9ULC3
Positive control	MCF7 whole cell lysate, HEK293T whole cell lysate, NIH 3T3 whole cell lysate.
General notes	<p>The Life Science industry has been in the grips of a reproducibility crisis for a number of years. Abcam is leading the way in addressing this with our range of recombinant monoclonal antibodies and knockout edited cell lines for gold-standard validation. Please check that this product meets your needs before purchasing.</p> <p>If you have any questions, special requirements or concerns, please send us an inquiry and/or contact our Support team ahead of purchase. Recommended alternatives for this product can be found below, along with publications, customer reviews and Q&As</p>

Properties

Form	Liquid
Storage instructions	Shipped at 4°C. Store at +4°C short term (1-2 weeks). Upon delivery aliquot. Store at -20°C long term. Avoid freeze / thaw cycle.
Storage buffer	pH: 7.20 Preservative: 0.05% Sodium azide Constituent: 99% PBS
Purity	Immunogen affinity purified
Purification notes	Purity is > 95% (by SDS-PAGE).
Clonality	Polyclonal
Isotype	IgG

Applications

The Abpromise guarantee

Our **Abpromise guarantee** covers the use of ab192420 in the following tested applications.

The application notes include recommended starting dilutions; optimal dilutions/concentrations should be determined by the end user.

Application	Abreviews	Notes
WB		1/5. Predicted molecular weight: 27 kDa.

Target

Involvement in disease

Defects in RAB23 are the cause of acrocephalopolysyndactyly type 2 (ACPS2) [MM:201000]. A syndrome characterized by craniosynostosis, polysyndactyly, obesity, and cardiac defects.

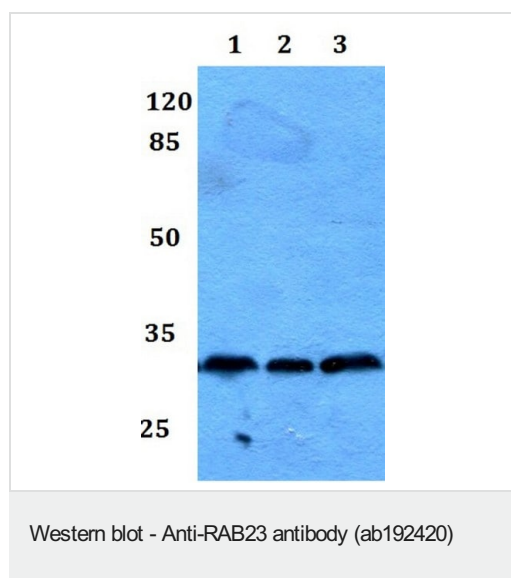
Sequence similarities

Belongs to the small GTPase superfamily. Rab family.

Cellular localization

Cell membrane.

Images



All lanes : Anti-RAB23 antibody (ab192420)

Lane 1 : MCF7 whole cell lysate

Lane 2 : HEK293T whole cell lysate

Lane 3 : NIH 3T3 whole cell lysate

Predicted band size: 27 kDa

Please note: All products are "FOR RESEARCH USE ONLY. NOT FOR USE IN DIAGNOSTIC PROCEDURES"

Our Abpromise to you: Quality guaranteed and expert technical support

- Replacement or refund for products not performing as stated on the datasheet
- Valid for 12 months from date of delivery
- Response to your inquiry within 24 hours
- We provide support in Chinese, English, French, German, Japanese and Spanish
- Extensive multi-media technical resources to help you
- We investigate all quality concerns to ensure our products perform to the highest standards

If the product does not perform as described on this datasheet, we will offer a refund or replacement. For full details of the Abpromise,

please visit <https://www.abcam.com/abpromise> or contact our technical team.

Terms and conditions

- Guarantee only valid for products bought direct from Abcam or one of our authorized distributors