


Anti-RAB31 antibody ab230881

[2 References](#) [3 Images](#)

Overview

Product name	Anti-RAB31 antibody
Description	Rabbit polyclonal to RAB31
Host species	Rabbit
Tested applications	Suitable for: WB, ICC/IF, IHC-P
Species reactivity	Reacts with: Mouse, Rat, Human Predicted to work with: Cow, Pig 
Immunogen	Synthetic peptide corresponding to Human RAB31 (internal sequence) conjugated to keyhole limpet haemocyanin. Database link: Q13636
Positive control	IHC-P: Human colon MALT and vessels tissue. ICC/IF: RAW 264.7 cells. WB: MCF7 and RAW 264.7 whole cell lysates; Rat brain lysate.
General notes	<p>The Life Science industry has been in the grips of a reproducibility crisis for a number of years. Abcam is leading the way in addressing this with our range of recombinant monoclonal antibodies and knockout edited cell lines for gold-standard validation. Please check that this product meets your needs before purchasing.</p> <p>If you have any questions, special requirements or concerns, please send us an inquiry and/or contact our Support team ahead of purchase. Recommended alternatives for this product can be found below, along with publications, customer reviews and Q&As</p>

Properties

Form	Liquid
Storage instructions	Shipped at 4°C. Store at +4°C short term (1-2 weeks). Upon delivery aliquot. Store at -20°C long term. Avoid freeze / thaw cycle.
Storage buffer	pH: 7.30 Preservative: 0.01% Sodium azide Constituents: PBS, 30% Glycerol (glycerin, glycerine)
Purity	Immunogen affinity purified
Clonality	Polyclonal
Isotype	IgG

Applications

The Abpromise guarantee

Our **Abpromise guarantee** covers the use of ab230881 in the following tested applications.

The application notes include recommended starting dilutions; optimal dilutions/concentrations should be determined by the end user.

Application	Abreviews	Notes
WB		1/500 - 1/1000. Predicted molecular weight: 22 kDa.
ICC/IF		1/100 - 1/500.
IHC-P		1/100.

Target

Tissue specificity

Highest expression in placenta and brain with lower levels in heart and lung. Not detected in liver, skeletal muscle, kidney or pancreas.

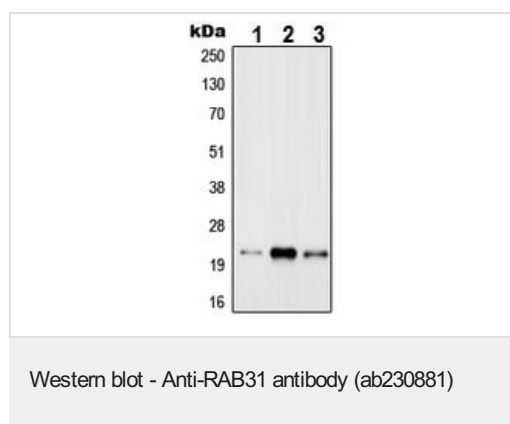
Sequence similarities

Belongs to the small GTPase superfamily. Rab family.

Cellular localization

Cell membrane.

Images



All lanes : Anti-RAB31 antibody (ab230881) at 1/500 dilution

Lane 1 : MCF7 (human breast adenocarcinoma cell line) whole cell lysate

Lane 2 : RAW 264.7 (mouse macrophage cell line transformed with Abelson murine leukemia virus) whole cell lysate

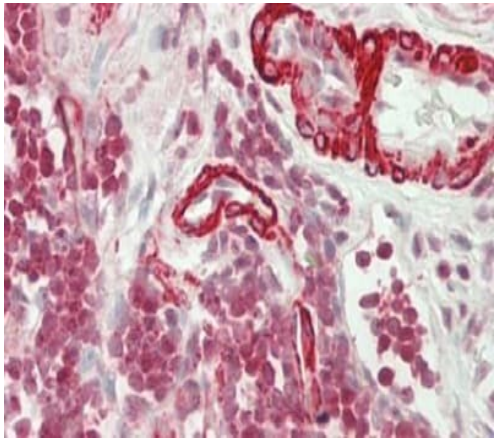
Lane 3 : Rat brain lysate

Predicted band size: 22 kDa



RAW 264.7 (mouse macrophage cell line transformed with Abelson murine leukemia virus) cells stained for RAB31 using ab230881 at 1/100 dilution in ICC/IF.

Formalin-fixed cells were permeabilized with 0.1% Triton X-100 in TBS for 5-10 minutes and blocked with 3% BSA-PBS for 30 minutes at room temperature. Cells were probed with the primary antibody in 3% BSA-PBS and incubated overnight at 4°C in a humidified chamber. Cells were washed with PBST and incubated with a Dylight® 594-conjugated secondary antibody (red) in PBS at room temperature in the dark. DAPI was used to stain the cell nuclei (blue).



Immunohistochemistry (Formalin/PFA-fixed paraffin-embedded sections) - Anti-RAB31 antibody (ab230881)

Formalin-fixed, paraffin-embedded human colon, MALT and vessels stained for RAB31 using ab230881 at 1/100 dilution in immunohistochemical analysis.

Please note: All products are "FOR RESEARCH USE ONLY. NOT FOR USE IN DIAGNOSTIC PROCEDURES"

Our Abpromise to you: Quality guaranteed and expert technical support

- Replacement or refund for products not performing as stated on the datasheet
- Valid for 12 months from date of delivery
- Response to your inquiry within 24 hours
- We provide support in Chinese, English, French, German, Japanese and Spanish
- Extensive multi-media technical resources to help you
- We investigate all quality concerns to ensure our products perform to the highest standards

If the product does not perform as described on this datasheet, we will offer a refund or replacement. For full details of the Abpromise, please visit <https://www.abcam.com/abpromise> or contact our technical team.

Terms and conditions

- Guarantee only valid for products bought direct from Abcam or one of our authorized distributors