


Product datasheet

Anti-RAB32 antibody ab229604

2 Images

Overview

Product name	Anti-RAB32 antibody
Description	Rabbit polyclonal to RAB32
Host species	Rabbit
Tested applications	Suitable for: WB, IP
Species reactivity	Reacts with: Human Predicted to work with: Rhesus monkey 
Immunogen	Recombinant fragment within Human RAB32 (internal sequence). The exact sequence is proprietary. Database link: Q13637
Positive control	IP: HeLa whole cell extracts. WB: A431, HeLa and HepG2 whole cell extracts.
General notes	<p>The Life Science industry has been in the grips of a reproducibility crisis for a number of years. Abcam is leading the way in addressing this with our range of recombinant monoclonal antibodies and knockout edited cell lines for gold-standard validation. Please check that this product meets your needs before purchasing.</p> <p>If you have any questions, special requirements or concerns, please send us an inquiry and/or contact our Support team ahead of purchase. Recommended alternatives for this product can be found below, along with publications, customer reviews and Q&As</p>

Properties

Form	Liquid
Storage instructions	Shipped at 4°C. Store at +4°C short term (1-2 weeks). Upon delivery aliquot. Store at -20°C long term. Avoid freeze / thaw cycle.
Storage buffer	pH: 7.00 Preservative: 0.025% Proclin 300 Constituents: 79% PBS, 20% Glycerol (glycerin, glycerine)
Purity	Immunogen affinity purified
Clonality	Polyclonal

Applications

The Abpromise guarantee

Our **Abpromise guarantee** covers the use of ab229604 in the following tested applications.

The application notes include recommended starting dilutions; optimal dilutions/concentrations should be determined by the end user.

Application	Abreviews	Notes
WB		1/500 - 1/3000. Predicted molecular weight: 25 kDa.
IP		1/100 - 1/500.

Target

Function

Acts as an A-kinase anchoring protein by binding to the type II regulatory subunit of protein kinase A and anchoring it to the mitochondrion. Also involved in synchronization of mitochondrial fission.

Tissue specificity

Widely expressed with high levels in heart, liver, kidney, bone marrow, testis, colon and fetal lung.

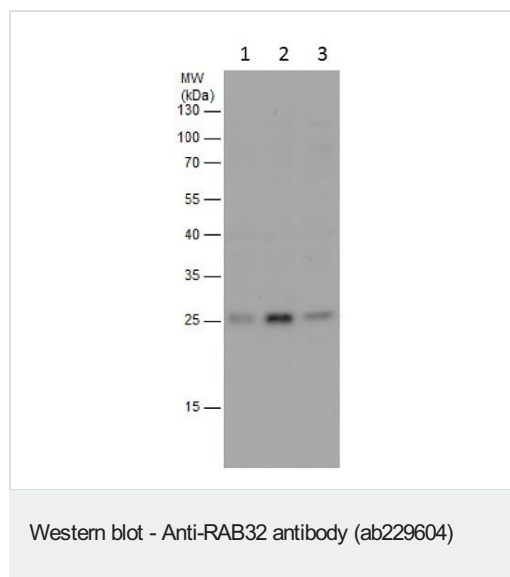
Sequence similarities

Belongs to the small GTPase superfamily. Rab family.

Cellular localization

Mitochondrion.

Images



All lanes : Anti-RAB32 antibody (ab229604) at 1/1000 dilution

Lane 1 : A431 (Human epidermoid carcinoma cell line) whole cell extract

Lane 2 : HeLa (Human epithelial cell line from cervix adenocarcinoma) whole cell extract

Lane 3 : HepG2 (Human liver hepatocellular carcinoma cell line) whole cell extract

Lysates/proteins at 30 µg per lane.

Predicted band size: 25 kDa

12% SDS-PAGE gel.



Immunoprecipitation - Anti-RAB32 antibody
(ab229604)

RAB32 was immunoprecipitated from HeLa (human epithelial cell line from cervix adenocarcinoma) whole cell lysate with 5 μ g ab229604. Western blot was performed from the immunoprecipitate using ab229604. Anti-Rabbit IgG was used as a secondary antibody.

Lane 1: HeLa whole cell lysate (Input).

Lane 2: Control IgG IP in HeLa whole cell lysate.

Lane 3: ab229604 IP in HeLa whole cell lysate.

Please note: All products are "FOR RESEARCH USE ONLY. NOT FOR USE IN DIAGNOSTIC PROCEDURES"

Our Abpromise to you: Quality guaranteed and expert technical support

- Replacement or refund for products not performing as stated on the datasheet
- Valid for 12 months from date of delivery
- Response to your inquiry within 24 hours
- We provide support in Chinese, English, French, German, Japanese and Spanish
- Extensive multi-media technical resources to help you
- We investigate all quality concerns to ensure our products perform to the highest standards

If the product does not perform as described on this datasheet, we will offer a refund or replacement. For full details of the Abpromise, please visit <https://www.abcam.com/abpromise> or contact our technical team.

Terms and conditions

- Guarantee only valid for products bought direct from Abcam or one of our authorized distributors