


Anti-RAB39B antibody ab151591

[4 Images](#)

Overview

Product name	Anti-RAB39B antibody
Description	Rabbit polyclonal to RAB39B
Host species	Rabbit
Tested applications	Suitable for: WB, IHC-P
Species reactivity	Reacts with: Mouse, Rat, Human Predicted to work with: Rabbit, Cow 
Immunogen	Recombinant fragment, corresponding to a region within amino acids 26-213 of Human RAB39B (Uniprot ID: Q96DA2).
Positive control	PC3 and U-87 MG whole cell lysates; Rat RT2 xenograft, Mouse C2C12 xenograft and Human Colon carcinoma tissues.
General notes	<p>The Life Science industry has been in the grips of a reproducibility crisis for a number of years. Abcam is leading the way in addressing this with our range of recombinant monoclonal antibodies and knockout edited cell lines for gold-standard validation. Please check that this product meets your needs before purchasing.</p> <p>If you have any questions, special requirements or concerns, please send us an inquiry and/or contact our Support team ahead of purchase. Recommended alternatives for this product can be found below, along with publications, customer reviews and Q&As</p>

Properties

Form	Liquid
Storage instructions	Shipped at 4°C. Upon delivery aliquot. Store at -20°C or -80°C. Avoid freeze / thaw cycle.
Storage buffer	pH: 7.00 Preservative: 0.01% Thimerosal (merthiolate) Constituents: 1.21% Tris, 0.75% Glycine, 20% Glycerol (glycerin, glycerine)
Purity	Immunogen affinity purified
Clonality	Polyclonal
Isotype	IgG

Applications

The Abpromise guarantee

Our **Abpromise guarantee** covers the use of ab151591 in the following tested applications.

The application notes include recommended starting dilutions; optimal dilutions/concentrations should be determined by the end user.

Application	Abreviews	Notes
WB		1/500 - 1/3000. Predicted molecular weight: 25 kDa.
IHC-P		1/100 - 1/1000. Perform heat mediated antigen retrieval with citrate buffer pH 6 before commencing with IHC staining protocol.

Target

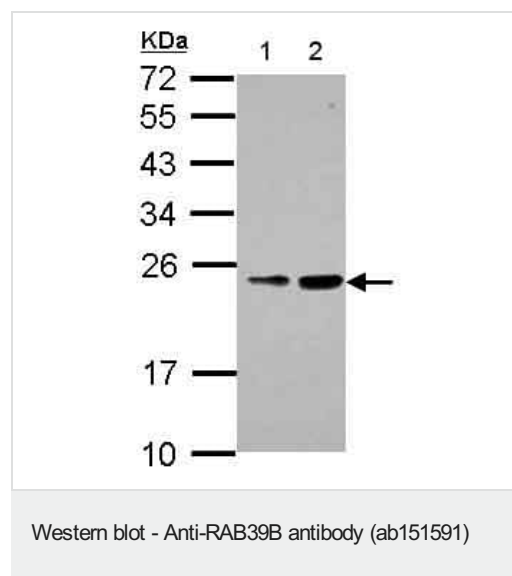
Relevance

RAB39B is a member of the Rab family of proteins. Rab proteins are small GTPases that are involved in vesicular trafficking.

Cellular localization

Cell membrane; Lipid-anchor; Cytoplasmic side

Images



All lanes : Anti-RAB39B antibody (ab151591) at 1/1000 dilution

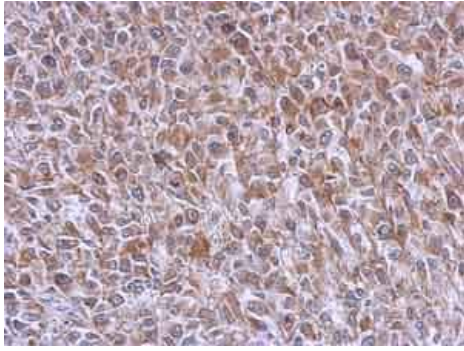
Lane 1 : PC3 whole cell lysate

Lane 2 : U-87 MG whole cell lysate

Lysates/proteins at 30 µg per lane.

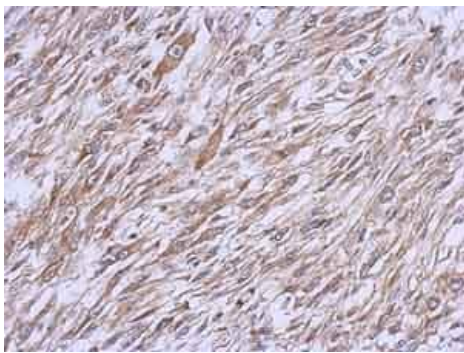
Predicted band size: 25 kDa

12% SDS PAGE



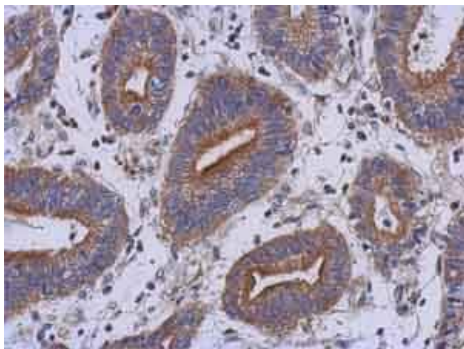
Immunohistochemistry (Formalin/PFA-fixed paraffin-embedded sections) - Anti-RAB39B antibody (ab151591)

Immunohistochemical analysis of paraffin-embedded Rat RT2 xenograft tissue, labeling RAB39B with ab151591 at 1/250 dilution.



Immunohistochemistry (Formalin/PFA-fixed paraffin-embedded sections) - Anti-RAB39B antibody (ab151591)

Immunohistochemical analysis of paraffin-embedded Mouse C2C12 tissue, labeling RAB39B with ab151591 at 1/250 dilution.



Immunohistochemistry (Formalin/PFA-fixed paraffin-embedded sections) - Anti-RAB39B antibody (ab151591)

Immunohistochemical analysis of paraffin-embedded Human Colon carcinoma tissue, labeling RAB39B with ab151591 at 1/250 dilution.

Please note: All products are "FOR RESEARCH USE ONLY. NOT FOR USE IN DIAGNOSTIC PROCEDURES"

Our Abpromise to you: Quality guaranteed and expert technical support

- Replacement or refund for products not performing as stated on the datasheet
- Valid for 12 months from date of delivery
- Response to your inquiry within 24 hours
- We provide support in Chinese, English, French, German, Japanese and Spanish
- Extensive multi-media technical resources to help you
- We investigate all quality concerns to ensure our products perform to the highest standards

If the product does not perform as described on this datasheet, we will offer a refund or replacement. For full details of the Abpromise, please visit <https://www.abcam.com/abpromise> or contact our technical team.

Terms and conditions

- Guarantee only valid for products bought direct from Abcam or one of our authorized distributors