

Product datasheet

Anti-RAB43 antibody [5G4] α b58030

[4 References](#) [2 Images](#)

Overview

Product name	Anti-RAB43 antibody [5G4]
Description	Mouse monoclonal [5G4] to RAB43
Host species	Mouse
Tested applications	Suitable for: WB, IHC-P
Species reactivity	Reacts with: Human
Immunogen	Recombinant fragment corresponding to Human RAB43 aa 113-211. Sequence: IEDVRKYAGSNIVQLLIGNKSDLSELREVSLAEAQSLAEHY DILCAIETS AKDSSNVEEAFLRVATELIMRHGGPLFSEKSPDHIQLNSK DIGEGWGC



[Run BLAST with](#)



[Run BLAST with](#)

General notes

This product was changed from ascites to tissue culture supernatant on 11th June 2019. Please note that the dilutions may need to be adjusted accordingly. If you have any questions, please do not hesitate to contact our scientific support team.

The Life Science industry has been in the grips of a reproducibility crisis for a number of years. Abcam is leading the way in addressing this with our range of recombinant monoclonal antibodies and knockout edited cell lines for gold-standard validation. Please check that this product meets your needs before purchasing.

If you have any questions, special requirements or concerns, please send us an inquiry and/or contact our Support team ahead of purchase. Recommended alternatives for this product can be found below, along with publications, customer reviews and Q&As

Properties

Form	Liquid
Storage instructions	Shipped at 4°C. Upon delivery aliquot and store at -20°C or -80°C. Avoid repeated freeze / thaw cycles.
Storage buffer	pH: 7.4
Purity	Tissue culture supernatant
Clonality	Monoclonal

Clone number	5G4
Isotype	IgG2a
Light chain type	kappa

Applications

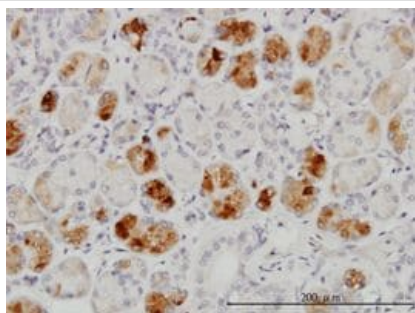
The Abpromise guarantee Our **Abpromise guarantee** covers the use of ab58030 in the following tested applications. The application notes include recommended starting dilutions; optimal dilutions/concentrations should be determined by the end user.

Application	Abreviews	Notes
WB		Use at an assay dependent concentration. Predicted molecular weight: 23 kDa.
IHC-P		Use at an assay dependent concentration.

Target

Tissue specificity	Widely expressed in brain, testis, lung, heart, ovary, colon, kidney, uterus and spleen but not in liver.
Sequence similarities	Belongs to the small GTPase superfamily. Rab family.
Cellular localization	Cell membrane.

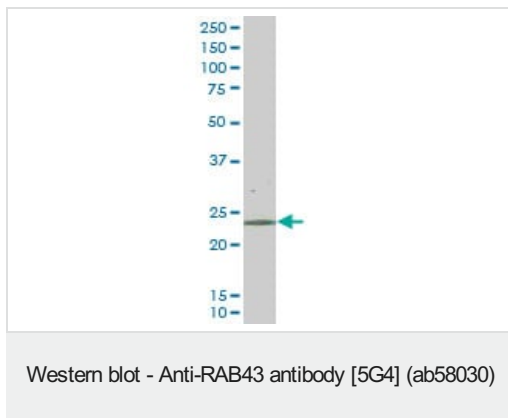
Images



RAB43 antibody (ab58030) used in immunohistochemistry at 3ug/ml on formalin fixed and paraffin embedded human salivary gland.

This image was generated using the ascites version of the product.

Immunohistochemistry (Formalin/PFA-fixed paraffin-embedded sections) - Anti-RAB43 antibody [5G4] (ab58030)



RAB43 antibody (ab58030) at 1ug/lane + HepG2 cell lysate at 25ug/lane.

This image was generated using the ascites version of the product.

Please note: All products are "FOR RESEARCH USE ONLY. NOT FOR USE IN DIAGNOSTIC PROCEDURES"

Our Abpromise to you: Quality guaranteed and expert technical support

- Replacement or refund for products not performing as stated on the datasheet
- Valid for 12 months from date of delivery
- Response to your inquiry within 24 hours
- We provide support in Chinese, English, French, German, Japanese and Spanish
- Extensive multi-media technical resources to help you
- We investigate all quality concerns to ensure our products perform to the highest standards

If the product does not perform as described on this datasheet, we will offer a refund or replacement. For full details of the Abpromise, please visit <https://www.abcam.com/abpromise> or contact our technical team.

Terms and conditions

- Guarantee only valid for products bought direct from Abcam or one of our authorized distributors