




## Product datasheet

### Anti-RAB4B antibody - N-terminal ab179948

★★★★★ [1 Abreviews](#) [2 Images](#)

#### Overview

<b>Product name</b>	Anti-RAB4B antibody - N-terminal
<b>Description</b>	Rabbit polyclonal to RAB4B - N-terminal
<b>Host species</b>	Rabbit
<b>Tested applications</b>	<b>Suitable for:</b> IHC-P, WB
<b>Species reactivity</b>	<b>Reacts with:</b> Human <b>Predicted to work with:</b> Mouse, Rat, Dog, Zebrafish 
<b>Immunogen</b>	Synthetic peptide within Human RAB4B aa 29-58 (N terminal) conjugated to Keyhole Limpet Haemocyanin (KLH). The exact sequence is proprietary. Sequence: IENKFKQDSNHTIGVEFGSRVVNVGGKTVK  Database link: <b><u>P61018</u></b>  <a href="#">Run BLAST with</a>  <a href="#">Run BLAST with</a>
<b>Positive control</b>	CEM cell lysate; Human kidney tissue.
<b>General notes</b>	<p>The Life Science industry has been in the grips of a reproducibility crisis for a number of years. Abcam is leading the way in addressing this with our range of recombinant monoclonal antibodies and knockout edited cell lines for gold-standard validation. Please check that this product meets your needs before purchasing.</p> <p>If you have any questions, special requirements or concerns, please send us an inquiry and/or contact our Support team ahead of purchase. Recommended alternatives for this product can be found below, along with publications, customer reviews and Q&amp;As</p>

#### Properties

<b>Form</b>	Liquid
<b>Storage instructions</b>	Shipped at 4°C. Store at +4°C short term (1-2 weeks). Upon delivery aliquot. Store at -20°C long term. Avoid freeze / thaw cycle.
<b>Storage buffer</b>	pH: 7.4 Preservative: 0.09% Sodium azide Constituent: 99% PBS
<b>Purity</b>	Immunogen affinity purified

<b>Clonality</b>	Polyclonal
<b>Isotype</b>	IgG

## Applications

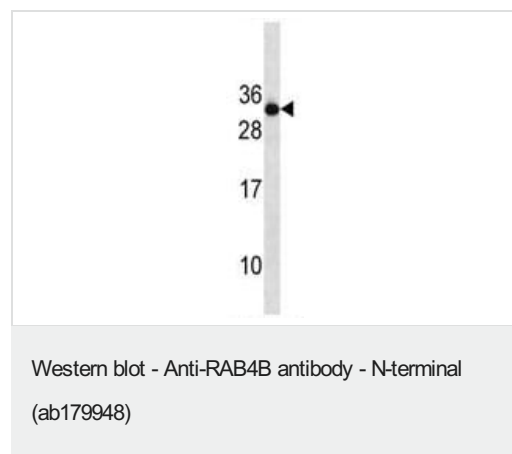
**The Abpromise guarantee** Our **Abpromise guarantee** covers the use of ab179948 in the following tested applications. The application notes include recommended starting dilutions; optimal dilutions/concentrations should be determined by the end user.

Application	Abreviews	Notes
IHC-P		Use a concentration of 5 µg/ml.
WB		1/100 - 1/500. Predicted molecular weight: 24 kDa.

## Target

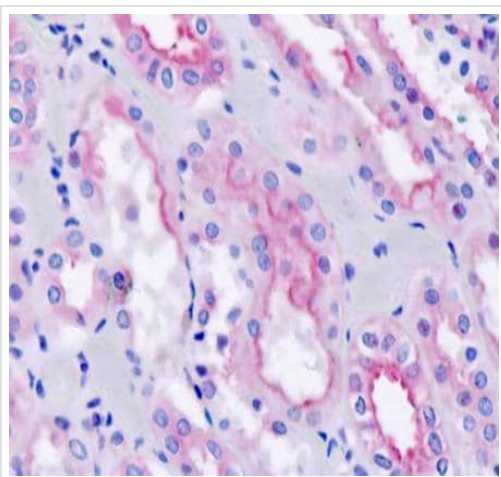
<b>Function</b>	Protein transport. Probably involved in vesicular traffic.
<b>Sequence similarities</b>	Belongs to the small GTPase superfamily. Rab family.
<b>Cellular localization</b>	Cell membrane.

## Images



Anti-RAB4B antibody - N-terminal (ab179948) at 1/100 dilution + CEM cell lysate at 35 µg

**Predicted band size:** 24 kDa



Immunohistochemical analysis of formalin-fixed, paraffin-embedded Human kidney tissue labeling RAB4B with ab179948 at 5 µg/ml.

Immunohistochemistry (Formalin/PFA-fixed paraffin-embedded sections) - Anti-RAB4B antibody - N-terminal (ab179948)

**Please note:** All products are "FOR RESEARCH USE ONLY. NOT FOR USE IN DIAGNOSTIC PROCEDURES"

### Our Abpromise to you: Quality guaranteed and expert technical support

---

- Replacement or refund for products not performing as stated on the datasheet
- Valid for 12 months from date of delivery
- Response to your inquiry within 24 hours
- We provide support in Chinese, English, French, German, Japanese and Spanish
- Extensive multi-media technical resources to help you
- We investigate all quality concerns to ensure our products perform to the highest standards

If the product does not perform as described on this datasheet, we will offer a refund or replacement. For full details of the Abpromise, please visit <https://www.abcam.com/abpromise> or contact our technical team.

### Terms and conditions

---

- Guarantee only valid for products bought direct from Abcam or one of our authorized distributors