


Anti-Rab5 antibody - Early Endosome Marker ab18211

★★★★☆ [26 Abreviews](#) [103 References](#) [4 Images](#)

Overview

Product name	Anti-Rab5 antibody - Early Endosome Marker
Description	Rabbit polyclonal to Rab5 - Early Endosome Marker
Host species	Rabbit
Specificity	<p>The immunogen used for this product shares 43% homology with Rab5C. Cross-reactivity with this protein has not been confirmed experimentally.</p> <p>Replenishment batches of our polyclonal antibody, ab18211 are tested in WB. Previous batches were additionally validated in ICC. This application is still expected to work and is covered by our Abpromise guarantee. You may also be interested in our alternative recombinant antibody, ab218624.</p>
Tested applications	Suitable for: WB, ICC
Species reactivity	Reacts with: Mouse, Rat, Human Predicted to work with: Dog, Chinese hamster 
Immunogen	Synthetic peptide corresponding to Human Rab5 aa 150 to the C-terminus (internal sequence) conjugated to keyhole limpet haemocyanin. (Peptide available as ab18625)
Positive control	ICC: HeLa cells
General notes	<p>The Life Science industry has been in the grips of a reproducibility crisis for a number of years. Abcam is leading the way in addressing this with our range of recombinant monoclonal antibodies and knockout edited cell lines for gold-standard validation. Please check that this product meets your needs before purchasing.</p> <p>If you have any questions, special requirements or concerns, please send us an inquiry and/or contact our Support team ahead of purchase. Recommended alternatives for this product can be found below, along with publications, customer reviews and Q&As</p>

Properties

Form	Liquid
Storage instructions	Shipped at 4°C. Store at +4°C short term (1-2 weeks). Upon delivery aliquot. Store at -20°C or -80°C. Avoid freeze / thaw cycle.
Storage buffer	pH: 7.40 Preservative: 0.02% Sodium azide

Constituent: PBS

Batches of this product that have a concentration < 1mg/ml may have BSA added as a stabilising agent. If you would like information about the formulation of a specific lot, please contact our scientific support team who will be happy to help.

Purity Immunogen affinity purified
Clonality Polyclonal
Isotype IgG

Applications

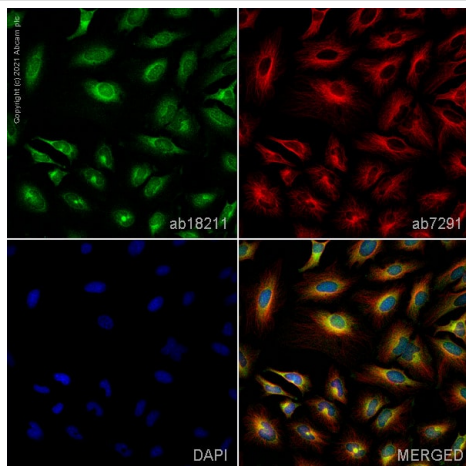
The Abpromise guarantee Our **Abpromise guarantee** covers the use of ab18211 in the following tested applications. The application notes include recommended starting dilutions; optimal dilutions/concentrations should be determined by the end user.

Application	Abreviews	Notes
WB	★★★★☆ (15)	Use a concentration of 1 µg/ml. Detects a band of approximately 24 kDa (predicted molecular weight: 24 kDa).
ICC		Use a concentration of 1 µg/ml.

Target

Function Required for the fusion of plasma membranes and early endosomes.
Sequence similarities Belongs to the small GTPase superfamily. Rab family.
Cellular localization Cell membrane. Early endosome membrane. Melanosome. Enriched in stage I melanosomes.

Images

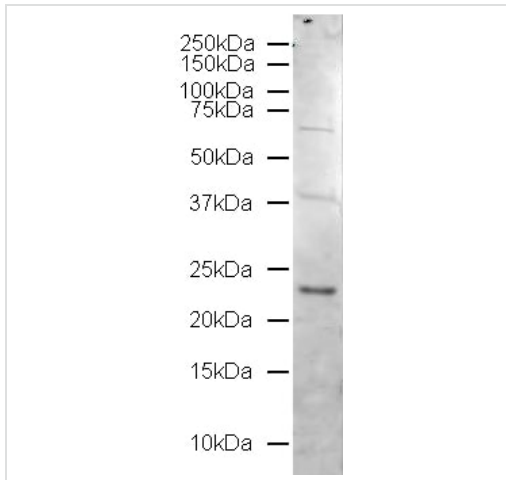


Immunocytochemistry - Anti-Rab5 antibody - Early Endosome Marker (ab18211)

ab18211 staining Rab5 in HeLa cells. The cells were fixed with 4% paraformaldehyde (10 min), permeabilized with 0.1% PBS-Tween for 5 minutes and then blocked with 1% BSA/10% normal goat serum/0.3M glycine in 0.1%PBS-Tween for 1h. The cells were then incubated overnight at 4°C with ab18211 at 1µg/ml and **ab7291**, Mouse monoclonal [DM1A] to alpha Tubulin - Loading Control. Cells were then incubated with **ab150081**, Goat polyclonal Secondary Antibody to Rabbit IgG - H&L (Alexa Fluor® 488), pre-adsorbed at 1/1000 dilution (shown in green) and **ab150120**, Goat polyclonal Secondary Antibody to Mouse IgG - H&L (Alexa Fluor® 594), pre-adsorbed at 1/1000 dilution (shown in pseudocolour red). Nuclear DNA was labelled with DAPI (shown in blue).

Image was acquired with a high-content analyser (Operetta CLS, Perkin Elmer) and a maximum intensity projection of confocal

sections is shown.



Western blot - Anti-Rab5 antibody - Early Endosome Marker (ab18211)

Anti-Rab5 antibody - Early Endosome Marker (ab18211) at 1 µg/ml
+ Jurkat cell lysate at 20 µg

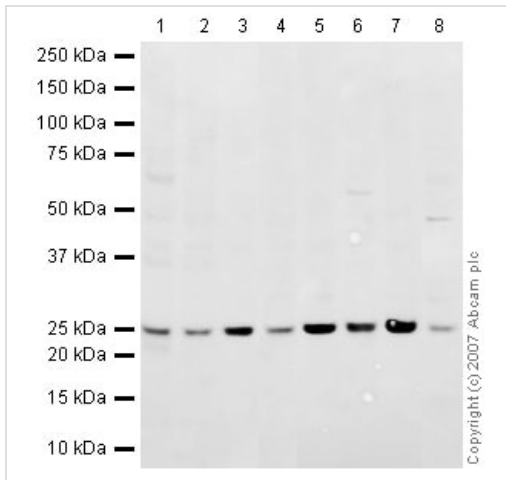
Secondary

Alexa Fluor Goat polyclonal to Rabbit IgG (700) at 1/5000 dilution

Predicted band size: 24 kDa

Observed band size: 24 kDa

Additional bands at: 40 kDa, 70 kDa. We are unsure as to the identity of these extra bands.



Western blot - Anti-Rab5 antibody - Early Endosome Marker (ab18211)

All lanes : Anti-Rab5 antibody - Early Endosome Marker (ab18211) at 1 µg/ml

Lane 1 : NIH/3T3 whole cell lysate ([ab7179](#))

Lane 2 : MEF1 (Mouse embryonic fibroblast cell line) Whole Cell Lysate ([ab46770](#))

Lane 3 : Brain (Mouse) Tissue Lysate ([ab27253](#))

Lane 4 : Testis (Mouse) Tissue Lysate - normal tissue

Lane 5 : Spinal Cord (Mouse) Tissue Lysate

Lane 6 : PC12 (Rat adrenal pheochromocytoma cell line) Whole Cell Lysate

Lane 7 : Brain (Rat) Tissue Lysate - normal tissue

Lane 8 : Heart (Rat) Tissue Lysate

Lysates/proteins at 10 µg per lane.

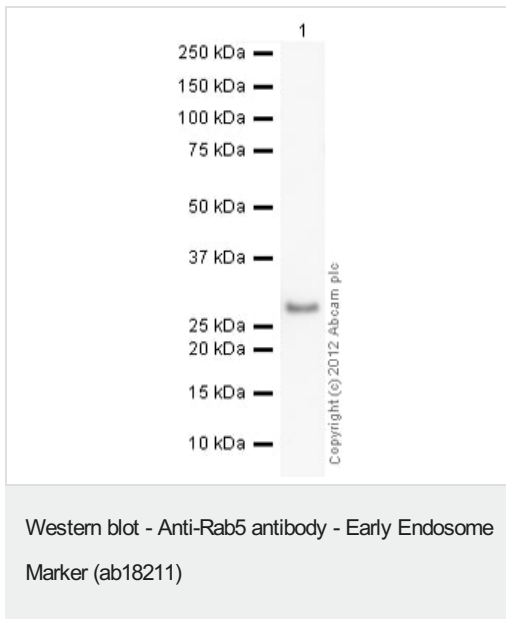
Secondary

All lanes : IRDye 680 Conjugated Goat Anti-Rabbit IgG (H+L) at 1/10000 dilution

Performed under reducing conditions.

Predicted band size: 24 kDa

Observed band size: 25 kDa



Anti-Rab5 antibody - Early Endosome Marker (ab18211) at 1 µg/ml
 + Recombinant Human Rab5A protein ([ab62956](#)) at 0.001 µg

Secondary

Goat Anti-Rabbit IgG H&L (HRP) preadsorbed ([ab97080](#)) at 1/5000 dilution

Developed using the ECL technique.

Performed under reducing conditions.

Predicted band size: 24 kDa

Exposure time: 150 seconds

Please note: All products are "FOR RESEARCH USE ONLY. NOT FOR USE IN DIAGNOSTIC PROCEDURES"

Our Abpromise to you: Quality guaranteed and expert technical support

- Replacement or refund for products not performing as stated on the datasheet
- Valid for 12 months from date of delivery
- Response to your inquiry within 24 hours
- We provide support in Chinese, English, French, German, Japanese and Spanish
- Extensive multi-media technical resources to help you
- We investigate all quality concerns to ensure our products perform to the highest standards

If the product does not perform as described on this datasheet, we will offer a refund or replacement. For full details of the Abpromise, please visit <https://www.abcam.com/abpromise> or contact our technical team.

Terms and conditions

- Guarantee only valid for products bought direct from Abcam or one of our authorized distributors