

Product datasheet

Anti-Rabbit IgG Fab region antibody [RMG01] ab190495

Recombinant

[4 References](#) [4 Images](#)

Overview

Product name	Anti-Rabbit IgG Fab region antibody [RMG01]
Description	Goat monoclonal [RMG01] to Rabbit IgG Fab region
Host species	Goat
Specificity	ab190495 reacts to the Fab region of Rabbit IgG. No cross reactivity with human IgG, rat IgG, or mouse IgG.
Tested applications	Suitable for: WB, ELISA
Species reactivity	Reacts with: Rabbit Does not react with: Mouse, Rat, Human
Immunogen	Full length protein corresponding to Rabbit IgG.

Properties

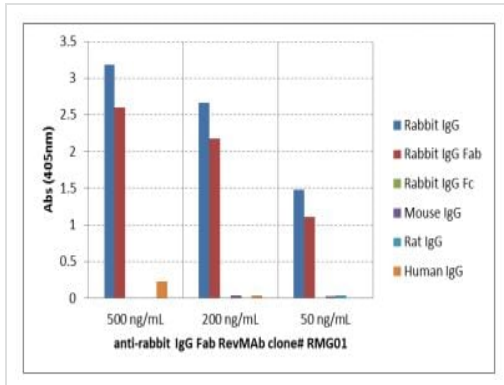
Form	Liquid
Storage instructions	Shipped at 4°C. Store at +4°C short term (1-2 weeks). Upon delivery aliquot. Store at -20°C long term. Avoid freeze / thaw cycle.
Storage buffer	Preservative: 0.09% Sodium azide Constituents: 1% BSA, 48% PBS, 50% Glycerol (glycerin, glycerine)
Purity	Protein G purified
Purification notes	ab190495 purified from an animal origin-free culture supernatant.
Clonality	Monoclonal
Clone number	RMG01
Isotype	IgG

Applications

The Abpromise guarantee Our **Abpromise guarantee** covers the use of ab190495 in the following tested applications. The application notes include recommended starting dilutions; optimal dilutions/concentrations should be determined by the end user.

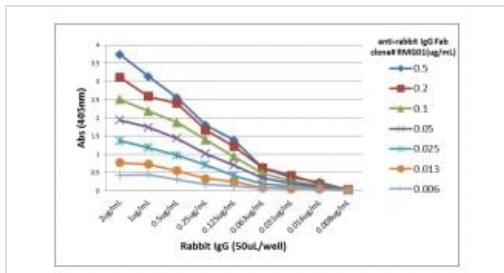
Application	Abreviews	Notes
WB		Use a concentration of 0.1 - 0.5 µg/ml. Use under non reducing condition. Predicted molecular weight: 150 kDa.
ELISA		Use a concentration of 0.01 - 0.5 µg/ml.

Images



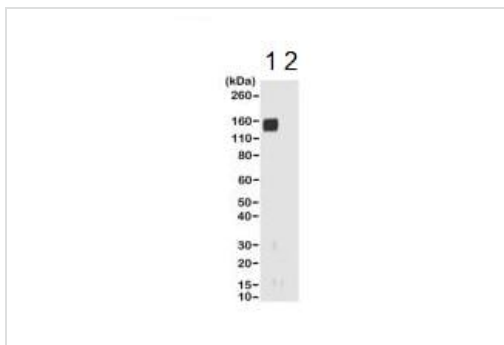
ELISA - Anti-Rabbit IgG Fab region antibody [RMG01] (ab190495)

ELISA analysis of different species' IgG shows ab190495 reacted to the Fab region of Rabbit IgG; no cross reactivity with Human IgG, Rat IgG, or Mouse IgG. The plate was coated with 50 ng/well of different IgG. 500 ng/mL, 200 ng/mL, or 50 ng/mL of ab190495 was used as the primary antibody. An alkaline phosphatase conjugated anti-Goat IgG as the secondary antibody.



ELISA - Anti-Rabbit IgG Fab region antibody [RMG01] (ab190495)

Titer ELISA analysis of Rabbit IgG. The plate was coated with different amounts of Rabbit IgG. A serial dilution of ab190495 was used as the primary antibody. An alkaline phosphatase conjugated anti-Goat IgG was used as the secondary antibody.



Western blot - Anti-Rabbit IgG Fab region antibody [RMG01] (ab190495)

All lanes : Anti-Rabbit IgG Fab region antibody [RMG01] (ab190495) at 0.2 µg/ml

Lane 1 : Non-reduced Rabbit IgG

Lane 2 : Reduced Rabbit IgG

Lysates/proteins at 0.02 µg per lane.

Predicted band size: 150 kDa

Why choose a recombinant antibody?



Research with confidence
Consistent and reproducible results



Long-term and scalable supply
Recombinant technology



Success from the first experiment
Confirmed specificity



Ethical standards compliant
Animal-free production

Anti-Rabbit IgG Fab region antibody [RMG01]
(ab190495)

Please note: All products are "FOR RESEARCH USE ONLY. NOT FOR USE IN DIAGNOSTIC PROCEDURES"

Our Abpromise to you: Quality guaranteed and expert technical support

- Replacement or refund for products not performing as stated on the datasheet
- Valid for 12 months from date of delivery
- Response to your inquiry within 24 hours
- We provide support in Chinese, English, French, German, Japanese and Spanish
- Extensive multi-media technical resources to help you
- We investigate all quality concerns to ensure our products perform to the highest standards

If the product does not perform as described on this datasheet, we will offer a refund or replacement. For full details of the Abpromise, please visit <https://www.abcam.com/abpromise> or contact our technical team.

Terms and conditions

- Guarantee only valid for products bought direct from Abcam or one of our authorized distributors