

Product datasheet

Anti-Rabbit IgG Fc antibody [RMG02] ab190492

Recombinant

[25 References](#) [4 Images](#)

Overview

| | |
|----------------------------|--|
| Product name | Anti-Rabbit IgG Fc antibody [RMG02] |
| Description | Goat monoclonal [RMG02] to Rabbit IgG Fc |
| Host species | Goat |
| Tested applications | Suitable for: ELISA, WB |
| Species reactivity | Reacts with: Rabbit |
| Immunogen | Full length protein corresponding to Rabbit IgG Fc . |
| Positive control | WB: Non-reduced rabbit IgG. |

Properties

| | |
|-----------------------------|---|
| Form | Liquid |
| Storage instructions | Shipped at 4°C. Store at +4°C short term (1-2 weeks). Upon delivery aliquot. Store at -20°C long term. Avoid freeze / thaw cycle. |
| Storage buffer | Preservative: 0.09% Sodium azide Constituents: 1% BSA, 50% Glycerol, PBS |
| Purity | Protein G purified |
| Purification notes | ab190492 was purified from an animal origin-free culture supernatant. |
| Clonality | Monoclonal |
| Clone number | RMG02 |
| Isotype | IgG |

Applications

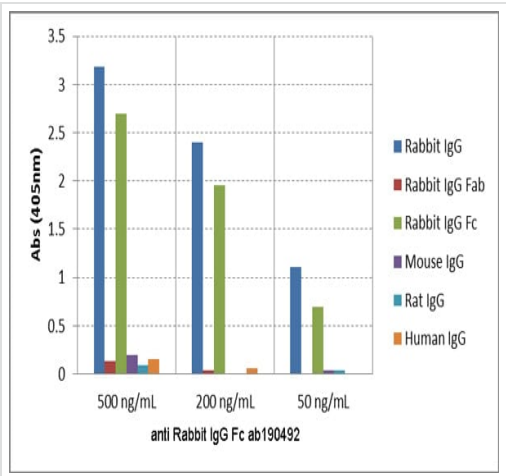
The Abpromise guarantee Our **Abpromise guarantee** covers the use of ab190492 in the following tested applications. The application notes include recommended starting dilutions; optimal dilutions/concentrations should be determined by the end user.

| Application | Abreviews | Notes |
|-------------|-----------|--|
| ELISA | | Use a concentration of 0.01 - 0.5 µg/ml. |

| Application | Abreviews | Notes |
|-------------|-----------|--|
| WB | | Use a concentration of 0.1 - 0.5 µg/ml. Use under non reducing condition. Predicted molecular weight: 150 kDa. |

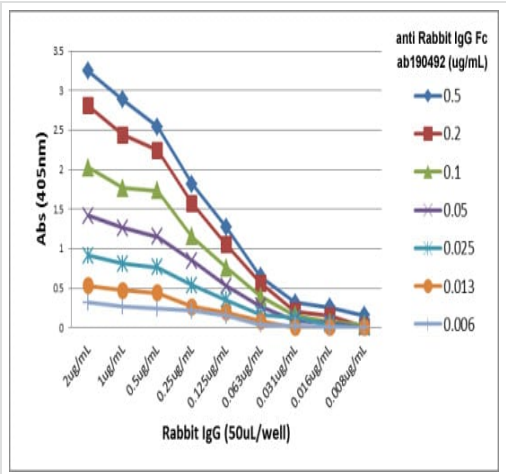
Target

Images



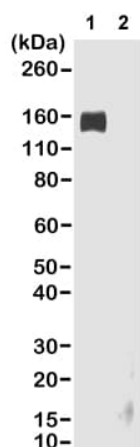
ELISA - Anti-Rabbit IgG Fc antibody [RMG02] (ab190492)

ELISA of IgGs from different species shows ab190492 reacts to the Fc region of rabbit IgG; no cross reactivity with human IgG, rat IgG, or mouse IgG. The plate was coated with 50 ng/well of different IgG. ab190492 was used as the primary antibody. An alkaline phosphatase conjugated anti-goat IgG as the secondary antibody.



ELISA - Anti-Rabbit IgG Fc antibody [RMG02] (ab190492)

A titer ELISA of rabbit IgG. The plate was coated with different amounts of rabbit IgG. A serial dilution of ab190492 was used as the primary antibody. An alkaline phosphatase conjugated anti-goat IgG as the secondary antibody.



Western blot - Anti-Rabbit IgG Fc antibody [RMG02] (ab190492)

All lanes : Anti-Rabbit IgG Fc antibody [RMG02] (ab190492) at 0.2 µg/ml

Lane 1 : Non-reduced rabbit IgG

Lane 2 : Reduced rabbit IgG

Lysates/proteins at 0.02 µg per lane.

Predicted band size: 150 kDa

ab190492 reacts to non-reduced rabbit IgG.

Why choose a recombinant antibody?



Research with confidence
Consistent and reproducible results



Long-term and scalable supply
Recombinant technology



Success from the first experiment
Confirmed specificity



Ethical standards compliant
Animal-free production

Anti-Rabbit IgG Fc antibody [RMG02] (ab190492)

Please note: All products are "FOR RESEARCH USE ONLY. NOT FOR USE IN DIAGNOSTIC PROCEDURES"

Our Promise to you: Quality guaranteed and expert technical support

- Replacement or refund for products not performing as stated on the datasheet
- Valid for 12 months from date of delivery
- Response to your inquiry within 24 hours
- We provide support in Chinese, English, French, German, Japanese and Spanish
- Extensive multi-media technical resources to help you
- We investigate all quality concerns to ensure our products perform to the highest standards

If the product does not perform as described on this datasheet, we will offer a refund or replacement. For full details of the Abpromise, please visit <https://www.abcam.com/abpromise> or contact our technical team.

Terms and conditions

- Guarantee only valid for products bought direct from Abcam or one of our authorized distributors