

Product datasheet

Rabbit IgG, monoclonal [EPR25A] - Isotype Control (Low endotoxin, Azide free) ab199376

Recombinant RabMAb

[14 References](#) [9 Images](#)

Overview

Product name	Rabbit IgG, monoclonal [EPR25A] - Isotype Control (Low endotoxin, Azide free)
Tested applications	Suitable for: Functional Studies, IHC-P, Flow Cyt, ICC/IF, IP
Immunogen	Chemical/ Small Molecule conjugated to keyhole limpet haemocyanin. KLH is a copper containing oxygen carrier occurring freely dissolved in the hemolymph of many molluscs and arthropods. KLH forms a large complex composed of ~50 kDa subunits.
General notes	<p>ab199376 is a carrier-free antibody designed for use in antibody labeling, including fluorochromes, metal isotopes, oligonucleotides, enzymes.</p> <p>Our Low endotoxin, azide-free formats have low endotoxin level (≤ 1 EU/ml, determined by the LAL assay) and are free from azide, to achieve consistent experimental results in functional assays.</p> <p>KLH is often used in molecular immunology as a carrier protein conjugated to low molecular weight molecules such as peptides, amino acids, nucleic acids, drugs or toxins to render them more immunogenic due to the size of the conjugate complex and the immunogenicity of KLH.</p> <p>This product is a recombinant monoclonal antibody, which offers several advantages including:</p> <ul style="list-style-type: none">- High batch-to-batch consistency and reproducibility- Improved sensitivity and specificity- Long-term security of supply- Animal-free production <p>For more information see here.</p> <p>Our RabMAb[®] technology is a patented hybridoma-based technology for making rabbit monoclonal antibodies. For details on our patents, please refer to RabMAb[®] patents.</p>

Properties

Form	Liquid
Storage instructions	Shipped at 4°C. Store at +4°C. Do Not Freeze.
Storage buffer	pH: 7.20 Constituent: PBS

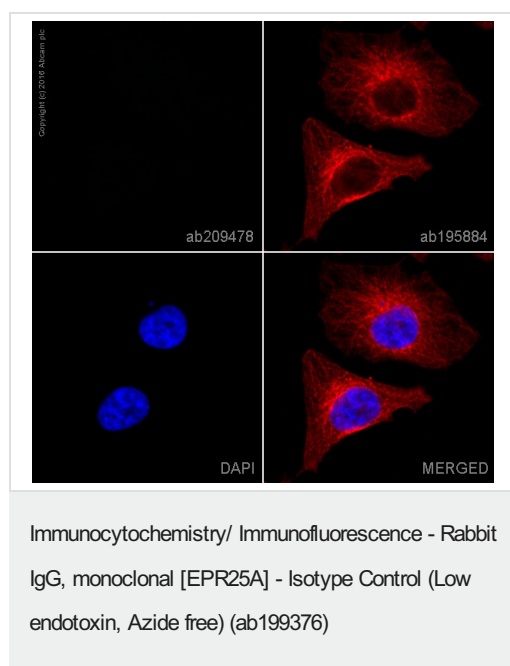
Carrier free	Yes
Purity	Protein A purified
Purification notes	Endotoxin level: <1EU/mg (based on Lumulus Amebocyte lysate assay).
Clonality	Monoclonal
Clone number	EPR25A
Isotype	IgG

Applications

The Abpromise guarantee Our **Abpromise guarantee** covers the use of ab199376 in the following tested applications. The application notes include recommended starting dilutions; optimal dilutions/concentrations should be determined by the end user.

Application	Abreviews	Notes
Functional Studies		Use at an assay dependent concentration.
IHC-P		1/250. Perform heat mediated antigen retrieval with Tris/EDTA buffer pH 9.0 before commencing with IHC staining protocol.
Flow Cyt		1/70.
ICC/IF		1/250.
IP		Use at an assay dependent concentration.

Images



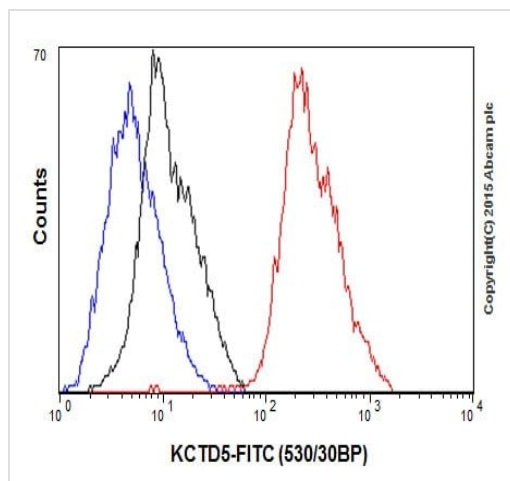
Clone EPR25A (ab199376) has been successfully conjugated by Abcam. This image was generated using Rabbit IgG, monoclonal [EPR25A] - Isotype Control (PE). Please refer to [ab209478](#) for protocol details.

Immunofluorescent analysis of HeLa (human cervical cancer) cells, fixed with 4% formaldehyde (10 min). The cells were permeabilized with 0.1% Triton X-100 for 5 minutes and then blocked with 1% BSA/10% normal goat serum/0.3M glycine in 0.1% PBS-Tween for 1h. The cells were then incubated overnight at +4°C with [ab209478](#) (Rabbit IgG, monoclonal [EPR25A] - Isotype Control) at 1/500 dilution (showing no signal) and [ab195884](#), Rat monoclonal [YOL1/34] to Tubulin Microtubule Marker (Alexa Fluor® 647), at 1/250 dilution (shown in red). Nuclear DNA was labelled with DAPI (shown in blue).

Image was taken with a confocal microscope (Leica-Microsystems, TCS SP8).

This product also gave a positive signal under the same testing

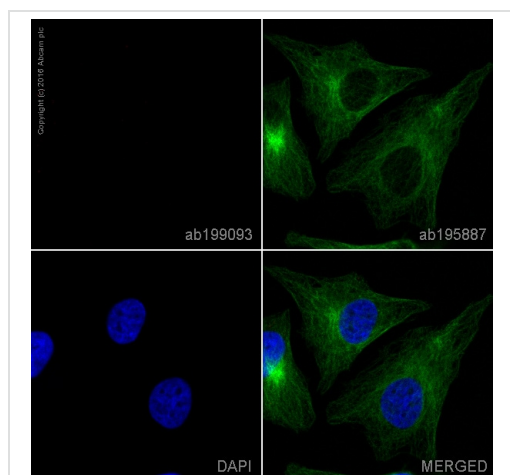
conditions in HeLa cells fixed with 100% methanol (5min).



Flow Cytometry - Rabbit IgG, monoclonal [EPR25A]
- Isotype Control (Low endotoxin, Azide free)
(ab199376)

Flow cytometric analysis of 4% paraformaldehyde-fixed Jurkat (Human T cell leukemia cells from peripheral blood) cells labeling KCTD5 with **ab194825** at 1/70 dilution (red) compared with ab199376 Rabbit IgG, monoclonal [EPR25A] - Isotype Control (Low endotoxin, Azide free) (black) and an unlabelled control (cells without incubation with primary antibody and secondary antibody; blue). Goat anti rabbit IgG (FITC) at 1/150 dilution was used as the secondary antibody. ab199376 detects no signal in FC.

Note: ab199376 detects no signal in Flow cytometry.



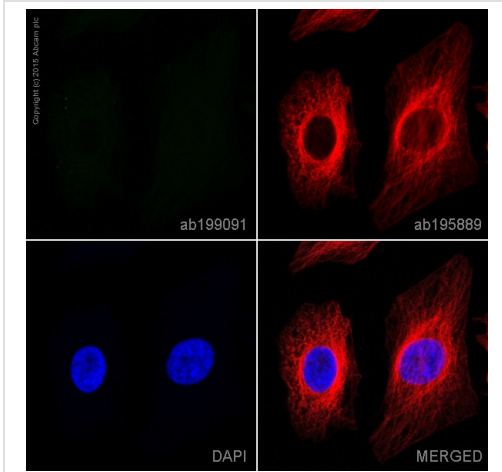
Immunocytochemistry/ Immunofluorescence - Rabbit IgG, monoclonal [EPR25A] - Isotype Control (Low endotoxin, Azide free) (ab199376)

Clone EPR25A (ab199376) has been successfully conjugated by Abcam. This image was generated using Rabbit IgG, monoclonal [EPR25A] - Isotype Control (Alexa Fluor® 647). Please refer to **ab199093** for protocol details.

Immunofluorescent analysis of HeLa (human epithelial cell line from cervix adenocarcinoma) cells, fixed with 4% formaldehyde (10 min). The cells were permeabilized with 0.1% Triton X-100 for 5 minutes and then blocked with 1% BSA/10% normal goat serum/0.3M glycine in 0.1% PBS-Tween for 1h. The cells were then incubated overnight at +4°C with **ab199093** (Rabbit IgG, monoclonal [EPR25A] - Isotype Control) at 1/500 dilution (showing no signal) and **ab195887**, Mouse monoclonal to alpha Tubulin (Alexa Fluor® 488), at 1/250 dilution (shown in green). Nuclear DNA was labeled with DAPI (shown in blue).

Image was taken with a confocal microscope (Leica-Microsystems, TCS SP8).

This product also gave a positive signal under the same testing conditions in HeLa cells fixed with 100% methanol (5min).



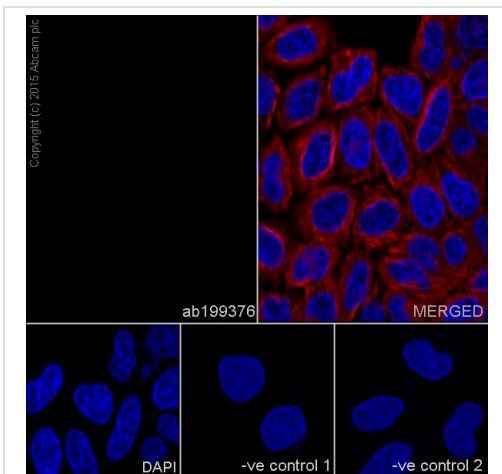
Immunocytochemistry/ Immunofluorescence - Rabbit IgG, monoclonal [EPR25A] - Isotype Control (Low endotoxin, Azide free) (ab199376)

Clone EPR25A (ab199376) has been successfully conjugated by Abcam. This image was generated using Rabbit IgG, monoclonal [EPR25A] - Isotype Control (Alexa Fluor® 488). Please refer to [ab199091](#) for protocol details.

Immunofluorescent analysis of HeLa (human epithelial cell line from cervix adenocarcinoma) cells, fixed with 4% formaldehyde (10 min). The cells were permeabilized with 0.1% Triton X-100 for 5 minutes and then blocked with 1% BSA/10% normal goat serum/0.3M glycine in 0.1% PBS-Tween for 1h. The cells were then incubated overnight at +4°C with [ab199091](#) (Rabbit IgG, monoclonal [EPR25A] - Isotype Control) at 1/500 dilution (showing no signal) and [ab195889](#), Mouse monoclonal to alpha Tubulin (Alexa Fluor® 594), at 1/250 dilution (pseudocolored in red). Nuclear DNA was labeled with DAPI (shown in blue).

Image was taken with a confocal microscope (Leica-Microsystems, TCS SP8).

This product also gave a positive signal under the same testing conditions in HeLa cells fixed with 100% methanol (5min).



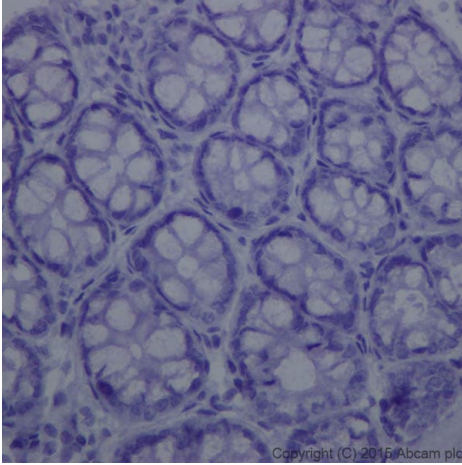
Immunocytochemistry/ Immunofluorescence - Rabbit IgG, monoclonal [EPR25A] - Isotype Control (Low endotoxin, Azide free) (ab199376)

Immunofluorescent analysis of 4% paraformaldehyde-fixed, 0.1% Triton X-100 permeabilized HeLa (Human epithelial cells from cervix adenocarcinoma) cells labeled with ab199376 at 1/250 dilution, followed by Goat anti-rabbit IgG (Alexa Fluor® 488) ([ab150077](#)) secondary antibody at 1/1000 dilution. Confocal image showing no staining on HeLa cell line. The nuclear counterstain is DAPI (blue). Tubulin is detected with [ab7291](#) (anti-Tubulin mouse mAb) at 1/1000 dilution and [ab150120](#) (AlexaFluor®594 Goat anti-Mouse secondary) at 1/1000 dilution (red).

The negative controls are as follows:-

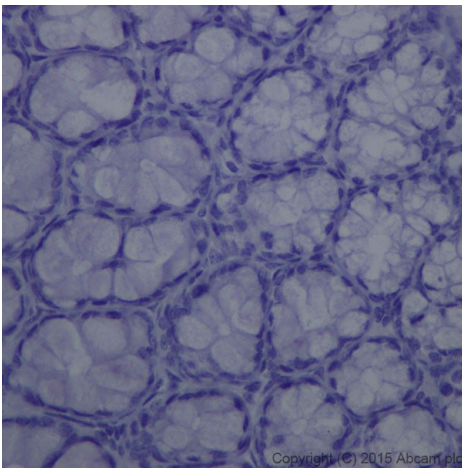
-ve control 1: ab199376 at 1/250 dilution followed by [ab150120](#) (AlexaFluor®594 Goat anti-Mouse secondary) at 1/1000 dilution.

-ve control 2: [ab7291](#) (anti-Tubulin mouse mAb) at 1/1000 dilution followed by [ab150077](#) (Alexa Fluor®488 Goat Anti-Rabbit IgG H&L) at 1/1000 dilution.



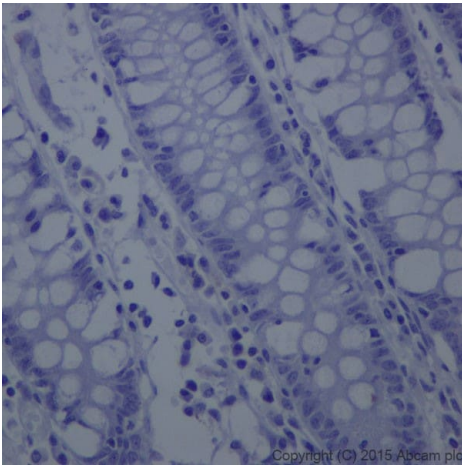
Immunohistochemistry analysis of rat colon tissue control for testing ab199376 at 1/250. Heat mediated antigen retrieval was performed using Tris/EDTA buffer pH 9. An anti-rabbit IgG H&L (HRP) (**ab97051**) was used as a secondary antibody. Counterstained with hematoxylin. No staining on rat colon tissue was observed.

Immunohistochemistry (Formalin/PFA-fixed paraffin-embedded sections) - Rabbit IgG, monoclonal [EPR25A] - Isotype Control (Low endotoxin, Azide free) (ab199376)



Immunohistochemistry analysis of mouse colon tissue control for testing ab199376 at 1/250. Heat mediated antigen retrieval was performed using Tris/EDTA buffer pH 9. An anti-rabbit IgG H&L (HRP) (**ab97051**) was used as a secondary antibody. Counterstained with hematoxylin. No staining on mouse colon tissue was observed.

Immunohistochemistry (Formalin/PFA-fixed paraffin-embedded sections) - Rabbit IgG, monoclonal [EPR25A] - Isotype Control (Low endotoxin, Azide free) (ab199376)



Immunohistochemistry analysis of human colon tissue control for testing ab199376 at 1/250. Heat mediated antigen retrieval was performed using Tris/EDTA buffer pH 9. An anti-rabbit IgG H&L (HRP) (**ab97051**) was used as a secondary antibody. Counterstained with hematoxylin. No staining on human colon tissue was observed.

Immunohistochemistry (Formalin/PFA-fixed paraffin-embedded sections) - Rabbit IgG, monoclonal [EPR25A] - Isotype Control (Low endotoxin, Azide free) (ab199376)

Why choose a recombinant antibody?

 <p>Research with confidence Consistent and reproducible results</p>	 <p>Long-term and scalable supply Recombinant technology</p>
 <p>Success from the first experiment Confirmed specificity</p>	 <p>Ethical standards compliant Animal-free production</p>

Rabbit IgG, monoclonal [EPR25A] - Isotype Control (Low endotoxin, Azide free) (ab199376)

Please note: All products are "FOR RESEARCH USE ONLY. NOT FOR USE IN DIAGNOSTIC PROCEDURES"

Our Abpromise to you: Quality guaranteed and expert technical support

- Replacement or refund for products not performing as stated on the datasheet
- Valid for 12 months from date of delivery
- Response to your inquiry within 24 hours

- We provide support in Chinese, English, French, German, Japanese and Spanish
- Extensive multi-media technical resources to help you
- We investigate all quality concerns to ensure our products perform to the highest standards

If the product does not perform as described on this datasheet, we will offer a refund or replacement. For full details of the Abpromise, please visit <https://www.abcam.com/abpromise> or contact our technical team.

Terms and conditions

- Guarantee only valid for products bought direct from Abcam or one of our authorized distributors