

Product datasheet

Rabbit IgG, polyclonal - Isotype Control ab37415

[236 References](#) [2 Images](#)

Overview

Product name	Rabbit IgG, polyclonal - Isotype Control
Specificity	This antibody has been selected to be an isotype control as it has no known specificity. Please note that the rabbit IgG Fc region may bind nonspecifically to human tissue. Rabbit IgG is an isotype control used to estimate the non-specific binding of target primary antibodies due to Fc binding or other protein-protein interactions.
Tested applications	Suitable for: IHC-P, ICC/IF, ELISA, Flow Cyt, ChIP/Chip
General notes	<p>The Life Science industry has been in the grips of a reproducibility crisis for a number of years. Abcam is leading the way in addressing this with our range of recombinant monoclonal antibodies and knockout edited cell lines for gold-standard validation. Please check that this product meets your needs before purchasing.</p> <p>If you have any questions, special requirements or concerns, please send us an inquiry and/or contact our Support team ahead of purchase. Recommended alternatives for this product can be found below, along with publications, customer reviews and Q&As</p>

Properties

Form	Liquid
Storage instructions	Shipped at 4°C. Store at +4°C short term (1-2 weeks). Upon delivery aliquot. Store at -20°C long term. Avoid freeze / thaw cycle.
Storage buffer	pH: 8.20 Constituent: 100% Borate buffered saline
Purity	Affinity purified
Purification notes	Protein A-purified
Clonality	Polyclonal
Isotype	IgG

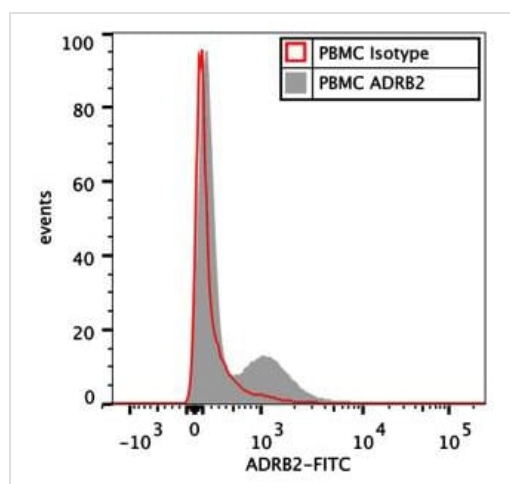
Applications

The Abpromise guarantee Our **Abpromise guarantee** covers the use of ab37415 in the following tested applications.

The application notes include recommended starting dilutions; optimal dilutions/concentrations should be determined by the end user.

Application	Abreviews	Notes
IHC-P		Use at an assay dependent concentration. PubMed: 24961933
ICC/IF		Use at an assay dependent concentration. PubMed: 23995768
ELISA		Use at an assay dependent concentration.
Flow Cyt		Use 1µg for 10 ⁶ cells.
ChIP/Chip		Use at an assay dependent concentration. PubMed: 20673990

Images

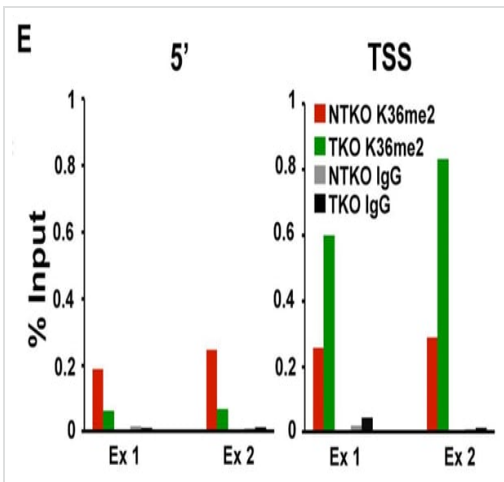


Histogram showing the fluorescence signal for ADRB2-FITC in PBMCs compared to an Isotype control.

PBMCs were generated from freshly-drawn blood from healthy human donors. After staining with antibodies against ADRB2 ([ab36956](#)) or an isotype control ([ab37415](#)), cells were incubated with FITC-labeled secondary anti-rabbit-IgG antibody, and ADRB2 expression was assessed by flow cytometry.

Flow Cytometry - Rabbit IgG, polyclonal - Isotype Control ([ab37415](#))

Image from Hilbert T et al., PLoS One. 2013;8(5):e65024. Fig 3(A); doi: 10.1371/journal.pone.0065024. Reproduced under the Creative Commons license <http://creativecommons.org/licenses/by/4.0/>



ChIP-qPCR for H3K36me2 on the *BTF3* locus in NTKO and TKO cells. Methylation enrichment was tested 5 kb upstream of the TSS (5') and at the TSS (right). ab37415 was used as the isotype control.

ChIP - Rabbit IgG, polyclonal - Isotype Control
(ab37415)

Image from Popovic R et al., PLoS Genet. 2014;10(9):e1004566. Fig 1(E).; doi: 10.1371/journal.pgen.1004566. Reproduced under the Creative Commons license <http://creativecommons.org/licenses/by/4.0/>

Please note: All products are "FOR RESEARCH USE ONLY. NOT FOR USE IN DIAGNOSTIC PROCEDURES"

Our Abpromise to you: Quality guaranteed and expert technical support

- Replacement or refund for products not performing as stated on the datasheet
- Valid for 12 months from date of delivery
- Response to your inquiry within 24 hours
- We provide support in Chinese, English, French, German, Japanese and Spanish
- Extensive multi-media technical resources to help you
- We investigate all quality concerns to ensure our products perform to the highest standards

If the product does not perform as described on this datasheet, we will offer a refund or replacement. For full details of the Abpromise, please visit <https://www.abcam.com/abpromise> or contact our technical team.

Terms and conditions

- Guarantee only valid for products bought direct from Abcam or one of our authorized distributors