



Product datasheet

Anti-Rabphilin 3A antibody ab3338

★★★★☆ [1 Abreviews](#) [3 References](#) [4 Images](#)

Overview

Product name	Anti-Rabphilin 3A antibody
Description	Rabbit polyclonal to Rabphilin 3A
Host species	Rabbit
Tested applications	Suitable for: WB, ICC/IF
Species reactivity	Reacts with: Mouse, Rat
Immunogen	Synthetic peptide corresponding to Rat Rabphilin 3A aa 1-18. Sequence: MTD TVVNRW MYPGDGPLQ (Peptide available as ab4954)
	 Run BLAST with  Run BLAST with
Positive control	WB: Rat Brain ; Mouse Brain ICC/IF: RSC96
General notes	<p>The Life Science industry has been in the grips of a reproducibility crisis for a number of years. Abcam is leading the way in addressing this with our range of recombinant monoclonal antibodies and knockout edited cell lines for gold-standard validation. Please check that this product meets your needs before purchasing.</p> <p>If you have any questions, special requirements or concerns, please send us an inquiry and/or contact our Support team ahead of purchase. Recommended alternatives for this product can be found below, along with publications, customer reviews and Q&As</p>

Properties

Form	Liquid
Storage instructions	Shipped at 4°C. Store at +4°C short term (1-2 weeks). Upon delivery aliquot. Store at -20°C or -80°C. Avoid freeze / thaw cycle.
Storage buffer	Constituents: 0.1% BSA, 99% PBS
Purity	Immunogen affinity purified
Clonality	Polyclonal
Isotype	IgG

Applications

The Abpromise guarantee

Our **Abpromise guarantee** covers the use of ab3338 in the following tested applications.

The application notes include recommended starting dilutions; optimal dilutions/concentrations should be determined by the end user.

Application	Abreviews	Notes
WB	★★★★★ (1)	Use a concentration of 1 µg/ml. By Western blot, this antibody detects an ~75 kDa protein representing Rabphilin 3A from rat brain whole protein extract.
ICC/IF		Use a concentration of 2 µg/ml.

Target

Function

Protein transport. Probably involved with Ras-related protein Rab-3A in synaptic vesicle traffic and/or synaptic vesicle fusion. Could play a role in neurotransmitter release by regulating membrane flow in the nerve terminal.

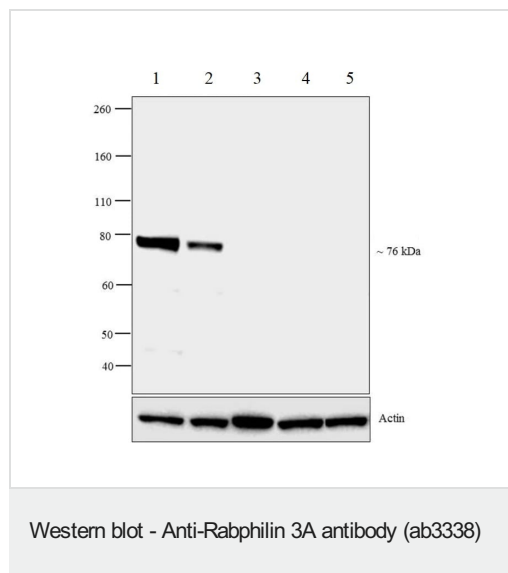
Sequence similarities

Contains 2 C2 domains.
Contains 1 FYVE-type zinc finger.
Contains 1 RabBD (Rab-binding) domain.

Cellular localization

Cell junction > synapse.

Images



All lanes : Anti-Rabphilin 3A antibody (ab3338) at 3 µg/ml

Lane 1 : Mouse Brain

Lane 2 : Rat Brain

Lane 3 : Rat Lung

Lane 4 : Rat Liver

Lane 5 : Rat Kidney

Lysates/proteins at 30 µg per lane.

Secondary

All lanes : HRP conjugated Goat anti-Rabbit IgG at 1/4000 dilution

Additional bands at: ~76 kDa. We are unsure as to the identity of these extra bands.

Detection: chemiluminescence

Rabphilin 3A observed in Mouse and Rat Brain, and not observed

in other tissues which are documented to be Rabphilin 3A negative.

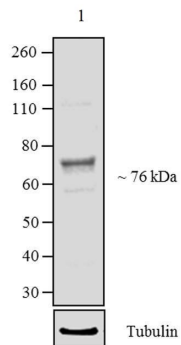
Anti-Rabphilin 3A antibody (ab3338) at 2 µg/ml + Rat Brain

Secondary

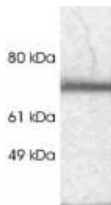
HRP conjugated Goat anti-Rabbit IgG at 1/2500 dilution

Additional bands at: ~76 kDa. We are unsure as to the identity of these extra bands.

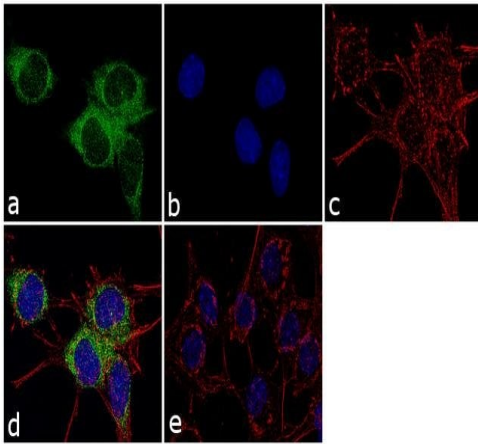
Detection: chemiluminescence



Western blot - Anti-Rabphilin 3A antibody (ab3338)



Western blot - Anti-Rabphilin 3A antibody (ab3338)



Immunocytochemistry/ Immunofluorescence - Anti-Rabphilin 3A antibody (ab3338)

Immunofluorescent analysis of 4% paraformaldehyde-fixed, 0.1% Triton™ X-100 permeabilized, 70% confluent log phase RSC96 (rat neuronal Schwann cell) cells, blocked with 3% BSA-PBS for 1 hour at room temperature. Labelling Rabphilin 3A with ab3338 at 2 µg/mL and incubated for 3 hours at room temperature then labelled with secondary antibody goat anti-rabbit igG, Alexa Fluor® 488 conjugate at a 1/2000 dilution for 45 minutes at room temperature (Green). Nuclei stained with DAPI (Blue). F-actin stained with Alexa Fluor® 555 Rhodamine Phalloidin at a dilution of 1/300 (Red). Panel e shows the no primary antibody control. The images were captured at 60X magnification.

Please note: All products are "FOR RESEARCH USE ONLY. NOT FOR USE IN DIAGNOSTIC PROCEDURES"

Our Abpromise to you: Quality guaranteed and expert technical support

- Replacement or refund for products not performing as stated on the datasheet
- Valid for 12 months from date of delivery
- Response to your inquiry within 24 hours
- We provide support in Chinese, English, French, German, Japanese and Spanish
- Extensive multi-media technical resources to help you
- We investigate all quality concerns to ensure our products perform to the highest standards

If the product does not perform as described on this datasheet, we will offer a refund or replacement. For full details of the Abpromise, please visit <https://www.abcam.com/abpromise> or contact our technical team.

Terms and conditions

- Guarantee only valid for products bought direct from Abcam or one of our authorized distributors