


# Anti-Rad6 antibody ab31917

★★★★☆ [2 Abreviews](#) [12 References](#) [4 Images](#)

### Overview

---

<b>Product name</b>	Anti-Rad6 antibody
<b>Description</b>	Rabbit polyclonal to Rad6
<b>Host species</b>	Rabbit
<b>Specificity</b>	ab31917 will detect both RAD6A and RAD6B. From Jan 2024, QC testing of replenishment batches of this polyclonal changed. All tested and expected application and reactive species combinations are still covered by our Abcam product promise. However, we no longer test all applications. For more information on a specific batch, please contact our Scientific Support who will be happy to help.
<b>Tested applications</b>	<b>Suitable for:</b> IHC-M, IHC-P, WB
<b>Species reactivity</b>	<b>Reacts with:</b> Mouse, Rat, Human, Zebrafish <b>Predicted to work with:</b> Rabbit, Chicken, Cow, Saccharomyces cerevisiae, Xenopus laevis, Drosophila melanogaster 
<b>Immunogen</b>	Synthetic peptide corresponding to Human Rad6 aa 1-100 conjugated to keyhole limpet haemocyanin. (Peptide available as <a href="#">ab28495</a> )
<b>General notes</b>	<p>The Life Science industry has been in the grips of a reproducibility crisis for a number of years. Abcam is leading the way in addressing this with our range of recombinant monoclonal antibodies and knockout edited cell lines for gold-standard validation. Please check that this product meets your needs before purchasing.</p> <p>If you have any questions, special requirements or concerns, please send us an inquiry and/or contact our Support team ahead of purchase. Recommended alternatives for this product can be found below, along with publications, customer reviews and Q&amp;As</p>

### Properties

---

<b>Form</b>	Liquid
<b>Storage instructions</b>	Shipped at 4°C. Store at +4°C short term (1-2 weeks). Upon delivery aliquot. Store at -20°C or -80°C. Avoid freeze / thaw cycle.
<b>Storage buffer</b>	pH: 7.40 Preservative: 0.02% Sodium azide Constituent: PBS

Batches of this product that have a concentration < 1mg/ml may have BSA added as a stabilising agent. If you would like information about the formulation of a specific lot, please contact our scientific support team who will be happy to help.

**Purity** Immunogen affinity purified  
**Clonality** Polyclonal  
**Isotype** IgG

## Applications

**The Abpromise guarantee** Our **Abpromise guarantee** covers the use of ab31917 in the following tested applications.

The application notes include recommended starting dilutions; optimal dilutions/concentrations should be determined by the end user.

Application	Abreviews	Notes
IHC-M		Use at an assay dependent concentration.
IHC-P		Use a concentration of 1 µg/ml. Perform heat mediated antigen retrieval before commencing with IHC staining protocol.
WB		Use a concentration of 1 µg/ml. Detects a band of approximately 17 kDa (predicted molecular weight: 17 kDa).

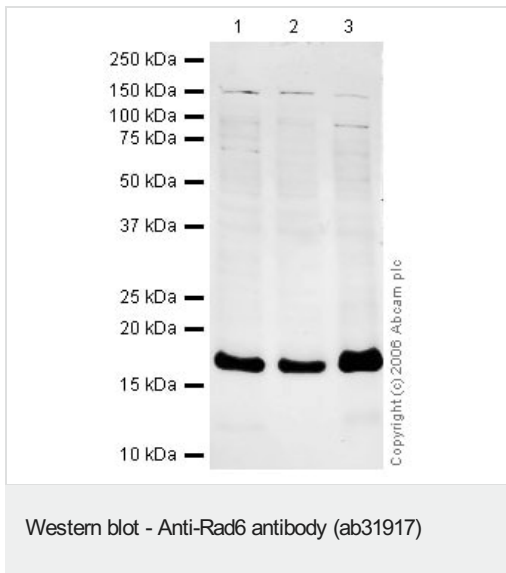
## Target

**Function** Accepts ubiquitin from the E1 complex and catalyzes its covalent attachment to other proteins. In association with the E3 enzyme BRE1 (RNF20 and/or RNF40), it plays a role in transcription regulation by catalyzing the monoubiquitination of histone H2B at 'Lys-120' to form H2BK120ub1. H2BK120ub1 gives a specific tag for epigenetic transcriptional activation, elongation by RNA polymerase II, telomeric silencing, and is also a prerequisite for H3K4me and H3K79me formation. In vitro catalyzes 'Lys-11', as well as 'Lys-48'-linked polyubiquitination. Required for postreplication repair of UV-damaged DNA.

**Pathway** Protein modification; protein ubiquitination.

**Sequence similarities** Belongs to the ubiquitin-conjugating enzyme family.

## Images



**All lanes :** Anti-Rad6 antibody (ab31917) at 1 µg/ml

**Lane 1 :** HeLa (Human epithelial carcinoma cell line) Whole Cell Lysate

**Lane 2 :** Jurkat whole cell lysate (**ab7899**)

**Lane 3 :** HeLa (Human epithelial carcinoma cell line) Nuclear Lysate

Lysates/proteins at 20 µg per lane.

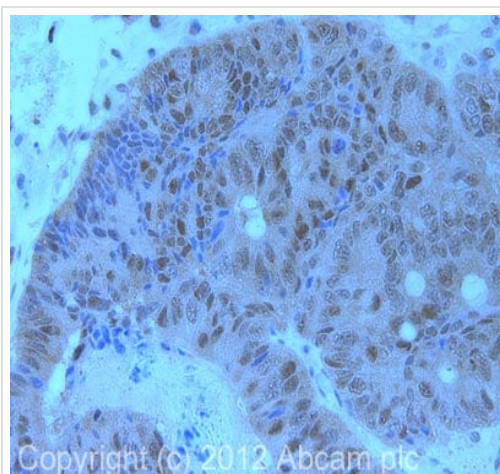
#### Secondary

**All lanes :** IRDye 680 Conjugated Goat Anti-Rabbit IgG (H&L) at 1/15000 dilution

Performed under reducing conditions.

**Predicted band size:** 17 kDa

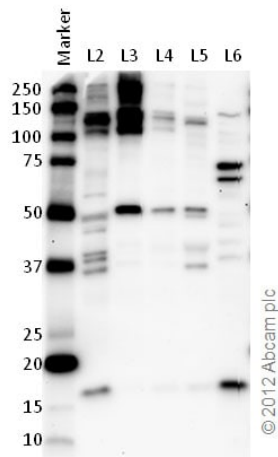
**Observed band size:** 17 kDa



Immunohistochemistry (Formalin/PFA-fixed paraffin-embedded sections) - Anti-Rad6 antibody (ab31917)

IHC image of ab31917 staining in human colon carcinoma formalin fixed paraffin embedded tissue section, performed on a Leica Bond™ system using the standard protocol F. The section was pre-treated using heat mediated antigen retrieval with sodium citrate buffer (pH6, epitope retrieval solution 1) for 20 mins. The section was then incubated with ab31917, 1µg/ml, for 15 mins at room temperature and detected using an HRP conjugated compact polymer system. DAB was used as the chromogen. The section was then counterstained with haematoxylin and mounted with DPX.

For other IHC staining systems (automated and non-automated) customers should optimize variable parameters such as antigen retrieval conditions, primary antibody concentration and antibody incubation times.



Western blot - Anti-Rad6 antibody (ab31917)

**All lanes :** Anti-Rad6 antibody (ab31917) at 1 µg/ml

**Lane 1 :** Marker

**Lane 2 :** Zebrafish brain homogenate

**Lane 3 :** Zebrafish heart homogenate

**Lane 4 :** Zebrafish liver homogenate

**Lane 5 :** Zebrafish skeletal muscle homogenate

**Lane 6 :** HeLa (Human epithelial carcinoma cell line) Whole Cell Lysate

Lysates/proteins at 10 µg per lane.

### Secondary

**All lanes :** Goat polyclonal to Rabbit IgG – H&L – Pre-Adsorbed (HRP) at 1/6000 dilution

Developed using the ECL technique.

Performed under reducing conditions.

**Predicted band size:** 17 kDa

**Observed band size:** 17 kDa

**Exposure time:** 5 minutes



Western blot - Anti-Rad6 antibody (ab31917)

**All lanes :** Anti-Rad6 antibody (ab31917) at 1 µg/ml

**Lane 1 :** Testis (Mouse) Tissue Lysate

**Lane 2 :** Testis (Rat) Tissue Lysate - normal tissue ([ab29388](#))

Lysates/proteins at 10 µg per lane.

### Secondary

**All lanes :** Goat Anti-Rabbit IgG H&L (HRP) preadsorbed ([ab97080](#)) at 1/5000 dilution

Developed using the ECL technique.

Performed under reducing conditions.

**Predicted band size:** 17 kDa

**Observed band size:** 17 kDa

**Exposure time:** 3 minutes

**Please note:** All products are "FOR RESEARCH USE ONLY. NOT FOR USE IN DIAGNOSTIC PROCEDURES"

### **Our Abpromise to you: Quality guaranteed and expert technical support**

---

- Replacement or refund for products not performing as stated on the datasheet
- Valid for 12 months from date of delivery
- Response to your inquiry within 24 hours
  
- We provide support in Chinese, English, French, German, Japanese and Spanish
- Extensive multi-media technical resources to help you
- We investigate all quality concerns to ensure our products perform to the highest standards

If the product does not perform as described on this datasheet, we will offer a refund or replacement. For full details of the Abpromise, please visit <https://www.abcam.com/abpromise> or contact our technical team.

### **Terms and conditions**

---

- Guarantee only valid for products bought direct from Abcam or one of our authorized distributors