


### Anti-RAIN antibody ab129820

1 Image

#### Overview

|                            |   |
|----------------------------|---|
| <b>Product name</b>        | Anti-RAIN antibody  |
| <b>Description</b>         | Rabbit polyclonal to RAIN   |
| <b>Host species</b>        | Rabbit  |
| <b>Tested applications</b> | <b>Suitable for:</b> WB   |
| <b>Species reactivity</b>  | <b>Reacts with:</b> Mouse<br><b>Predicted to work with:</b> Rat, Rabbit, Horse, Cow, Dog, Human, Pig, Chimpanzee, Macaque monkey, Gorilla, Orangutan   |
| <b>Immunogen</b>           | Synthetic peptide. This information is proprietary to Abcam and/or its suppliers.   |
| <b>Positive control</b>    | This antibody gave a positive signal in Mouse Lung tissue lysate.   |
| <b>General notes</b>       | <p>The Life Science industry has been in the grips of a reproducibility crisis for a number of years. Abcam is leading the way in addressing this with our range of recombinant monoclonal antibodies and knockout edited cell lines for gold-standard validation. Please check that this product meets your needs before purchasing.</p> <p>If you have any questions, special requirements or concerns, please send us an inquiry and/or contact our Support team ahead of purchase. Recommended alternatives for this product can be found below, along with publications, customer reviews and Q&amp;As</p> |

#### Properties

|                             |  |
|-----------------------------|--|
| <b>Form</b>                 | Liquid   |
| <b>Storage instructions</b> | Shipped at 4°C. Store at +4°C short term (1-2 weeks). Upon delivery aliquot. Store at -20°C or -80°C. Avoid freeze / thaw cycle.   |
| <b>Storage buffer</b>       | <p>pH: 7.40</p> <p>Preservative: 0.02% Sodium azide</p> <p>Constituent: PBS</p> <p>Batches of this product that have a concentration &lt; 1mg/ml may have BSA added as a stabilising agent. If you would like information about the formulation of a specific lot, please contact our scientific support team who will be happy to help.</p> |
| <b>Purity</b>               | Immunogen affinity purified  |
| <b>Clonality</b>            | Polyclonal   |

Isotype

IgG

## Applications

### The Abpromise guarantee

Our **Abpromise guarantee** covers the use of ab129820 in the following tested applications.

The application notes include recommended starting dilutions; optimal dilutions/concentrations should be determined by the end user.

| Application | Abreviews | Notes   |
|-------------|-----------|---|
| WB          |           | 1/250. Detects a band of approximately 115 kDa (predicted molecular weight: 103 kDa). |

## Target

### Function

May act as effector for Golgi-bound HRAS and other Ras-like proteins. May promote HRAS-mediated transformation.

### Tissue specificity

Highly expressed in heart. Detected at lower levels in placenta and pancreas.

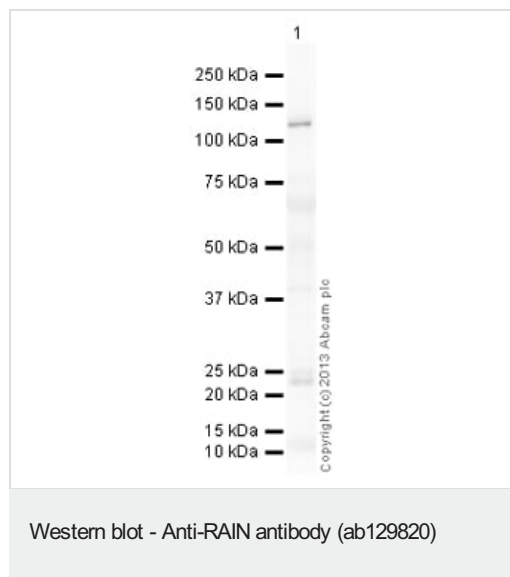
### Sequence similarities

Contains 1 dilute domain.  
Contains 1 Ras-associating domain.

### Cellular localization

Cytoplasm > perinuclear region. Golgi apparatus > Golgi stack. Associated with perinuclear vesicles. Is recruited to Golgi stacks by activated HRAS.

## Images



Anti-RAIN antibody (ab129820) at 1/250 dilution + Mouse lung normal tissue lysate - total protein (**ab29297**) at 10 µg

### Secondary

Goat Anti-Rabbit IgG H&L (HRP) (**ab97051**) at 1/10000 dilution

Developed using the ECL technique.

Performed under reducing conditions.

**Predicted band size:** 103 kDa

**Observed band size:** 115 kDa

**Additional bands at:** 23 kDa, 39 kDa, 68 kDa. We are unsure as to the identity of these extra bands.

**Exposure time:** 8 minutes

The expression profile observed is consistent with what has been

described in the literature PMID:15031288. This blot was produced using a 4-12% Bis-tris gel under the MOPS buffer system. The gel was run at 200V for 50 minutes before being transferred onto a Nitrocellulose membrane at 30V for 70 minutes. The membrane was then blocked for an hour using 5% Bovine Serum Albumin before being incubated with ab129820 overnight at 4°C. Antibody binding was detected using an anti-rabbit antibody conjugated to HRP, and visualised using ECL development solution.

**Please note:** All products are "FOR RESEARCH USE ONLY. NOT FOR USE IN DIAGNOSTIC PROCEDURES"

### **Our Abpromise to you: Quality guaranteed and expert technical support**

---

- Replacement or refund for products not performing as stated on the datasheet
- Valid for 12 months from date of delivery
- Response to your inquiry within 24 hours
- We provide support in Chinese, English, French, German, Japanese and Spanish
- Extensive multi-media technical resources to help you
- We investigate all quality concerns to ensure our products perform to the highest standards

If the product does not perform as described on this datasheet, we will offer a refund or replacement. For full details of the Abpromise, please visit <https://www.abcam.com/abpromise> or contact our technical team.

### **Terms and conditions**

---

- Guarantee only valid for products bought direct from Abcam or one of our authorized distributors