




Product datasheet

Anti-RALA antibody ab236314

[1 References](#) [2 Images](#)

Overview

Product name	Anti-RALA antibody
Description	Rabbit polyclonal to RALA
Host species	Rabbit
Tested applications	Suitable for: ICC/IF, IHC-P
Species reactivity	Reacts with: Human Predicted to work with: Mouse, Rat, Saguinus oedipus 
Immunogen	Recombinant fragment corresponding to Human RALA aa 1 to the C-terminus. Database link: P11233  Run BLAST with  Run BLAST with
Positive control	IHC-P: Human adrenal gland tissue. ICC/IF: HeLa cells.
General notes	<p>The Life Science industry has been in the grips of a reproducibility crisis for a number of years. Abcam is leading the way in addressing this with our range of recombinant monoclonal antibodies and knockout edited cell lines for gold-standard validation. Please check that this product meets your needs before purchasing.</p> <p>If you have any questions, special requirements or concerns, please send us an inquiry and/or contact our Support team ahead of purchase. Recommended alternatives for this product can be found below, along with publications, customer reviews and Q&As</p>

Properties

Form	Liquid
Storage instructions	Shipped at 4°C. Store at +4°C short term (1-2 weeks). Upon delivery aliquot. Store at -20°C long term. Avoid freeze / thaw cycle.
Storage buffer	pH: 7.40 Preservative: 0.03% Proclin 300 Constituents: PBS, 50% Glycerol (glycerin, glycerine)
Purity	Protein G purified
Purification notes	Purity >95%.
Clonality	Polyclonal
Isotype	IgG

Applications

The Abpromise guarantee

Our **Abpromise guarantee** covers the use of ab236314 in the following tested applications.

The application notes include recommended starting dilutions; optimal dilutions/concentrations should be determined by the end user.

Application	Abreviews	Notes
ICC/IF		1/20 - 1/200.
IHC-P		1/20 - 1/200.

Target

Function

Multifunctional GTPase involved in a variety of cellular processes including gene expression, cell migration, cell proliferation, oncogenic transformation and membrane trafficking. Accomplishes its multiple functions by interacting with distinct downstream effectors. Acts as a GTP sensor for GTP-dependent exocytosis of dense core vesicles. Plays a role in the early stages of cytokinesis and is required to tether the exocyst to the cytokinetic furrow. The RALA-exocyst complex regulates integrin-dependent membrane raft exocytosis and growth signaling. Key regulator of LPAR1 signaling and competes with ADRBK1 for binding to LPAR1 thus affecting the signaling properties of the receptor. Required for anchorage-independent proliferation of transformed cells.

Sequence similarities

Belongs to the small GTPase superfamily. Ras family.

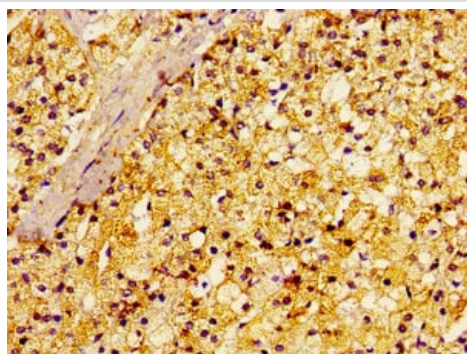
Post-translational modifications

Prenylation is essential for membrane localization. The geranylgeranylated form and the farnesylated mutant does not undergo alternative prenylation in response to geranylgeranyltransferase I inhibitors (GGTIs) and farnesyltransferase I inhibitors (FTIs).

Cellular localization

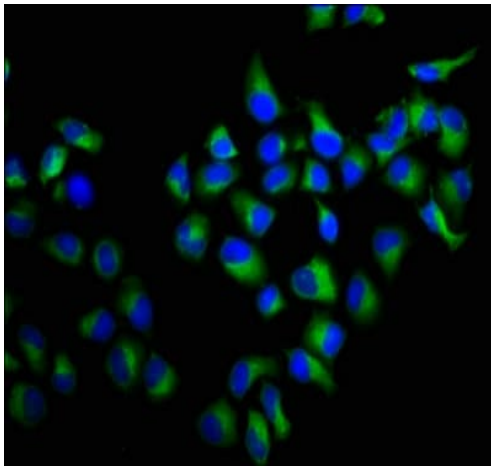
Cell surface. Cell membrane. Cleavage furrow. Midbody. Prior to LPA treatment found predominantly at the cell surface and in the presence of LPA co-localizes with LPAR1 and LPAR2 in the endocytic vesicles. During early cytokinesis localizes at the cleavage furrow membrane. Colocalizes with EXOC2 at the early midbody ring and persists there till maturation of the midbody.

Images



Paraffin-embedded human adrenal gland tissue stained for RALA using ab236314 at 1/100 dilution in immunohistochemical analysis.

Immunohistochemistry (Formalin/PFA-fixed paraffin-embedded sections) - Anti-RALA antibody (ab236314)



Immunocytochemistry/ Immunofluorescence - Anti-RALA antibody (ab236314)

4% formaldehyde-fixed, 0.2 Triton X-100 permeabilized HeLa (human epithelial cell line from cervix adenocarcinoma) cells labeling RALA using ab236314 (green) at 1/100 dilution in ICC/IF.

Cells were blocked in 10% normal goat serum and incubated with primary antibody overnight at 4°C. The secondary antibody was Alexa Fluor® 488-conjugated goat anti-rabbit IgG (H+L). Counter stained with DAPI (blue).

Please note: All products are "FOR RESEARCH USE ONLY. NOT FOR USE IN DIAGNOSTIC PROCEDURES"

Our Abpromise to you: Quality guaranteed and expert technical support

- Replacement or refund for products not performing as stated on the datasheet
- Valid for 12 months from date of delivery
- Response to your inquiry within 24 hours
- We provide support in Chinese, English, French, German, Japanese and Spanish
- Extensive multi-media technical resources to help you
- We investigate all quality concerns to ensure our products perform to the highest standards

If the product does not perform as described on this datasheet, we will offer a refund or replacement. For full details of the Abpromise, please visit <https://www.abcam.com/abpromise> or contact our technical team.

Terms and conditions

- Guarantee only valid for products bought direct from Abcam or one of our authorized distributors